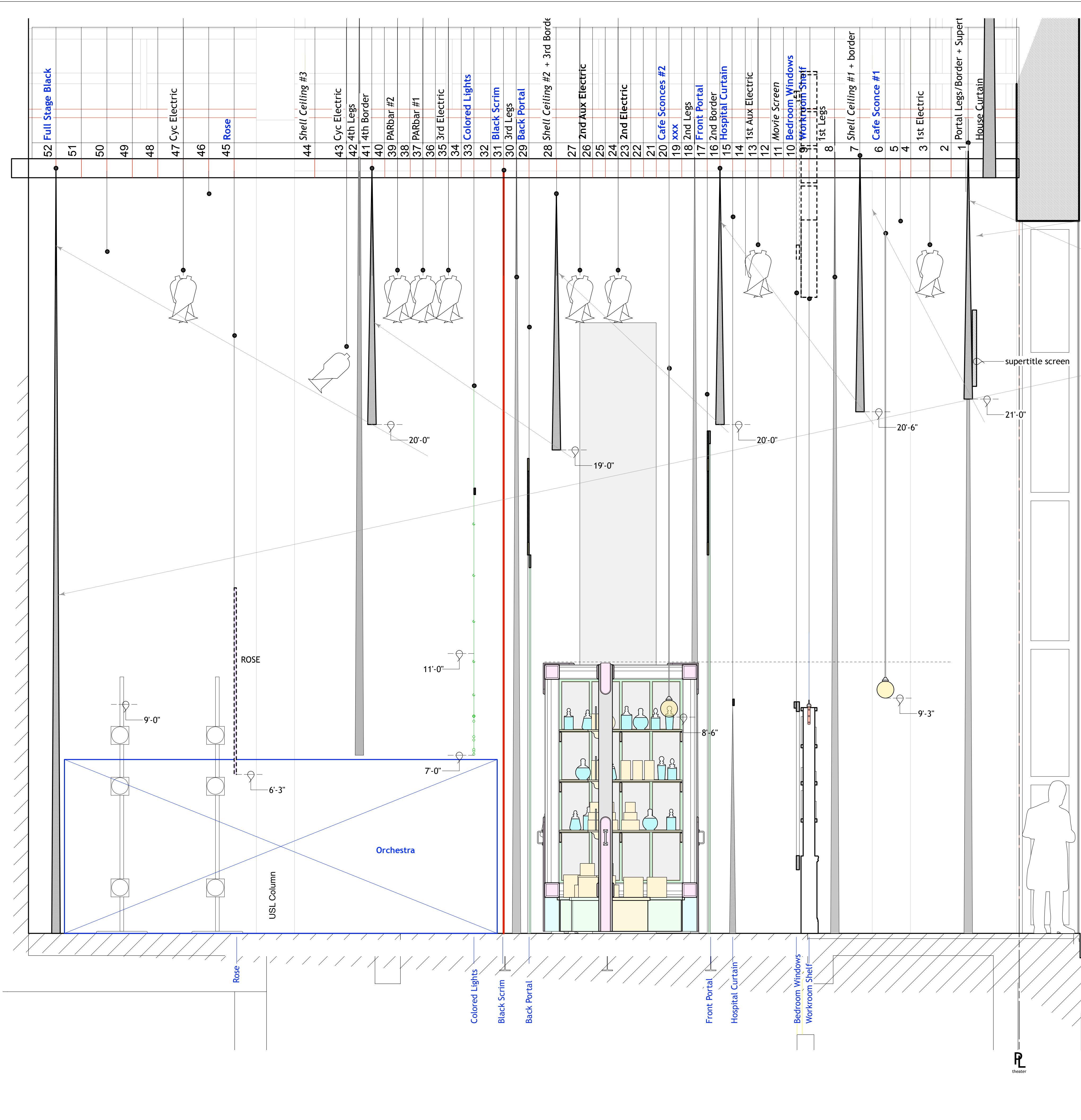


52	Full Stage Black
51	
50	
49	
48	
47	Cyc Electric
46	
45	Rose
44	Shell Ceiling #3
43	Cyc Electric
42	4th Legs
41	4th Border
40	PARbar #2
38	PARbar #1
37	PARbar #1
36	3rd Electric
34	Colored Lights
32	Black Scrim
31	3rd Legs
30	3rd Electric
29	Back Portal
28	Shell Ceiling #2 + 3rd Border
27	2nd Aux Electric
26	
25	
24	2nd Electric
22	
21	
20	Cafe Scences #2
19	xxx
18	2nd Legs
17	Front Portal
16	2nd Border
15	Hospital Curtain
14	
13	1st Aux Electric
12	
11	Movie Screen
10	Bedroom Windows
9	Workroom Shelf
8	1st Legs
7	Shell Ceiling #1 + Border 1B
6	Cafe Scence #1
5	
4	
3	1st Electric
2	
1	Portal Legs/Border 1A + Supertitles
	House Curtain

- plate list
- 1 composite ground plan
 - 2 CL section
 - 3 front & back portals
 - 4a rolling windows
 - 4b rolling windows full scale details
 - 5 workroom shelf, counters
 - 6 hospital curtain, rose, colored lights
 - 7 bedroom windows, cafe globes

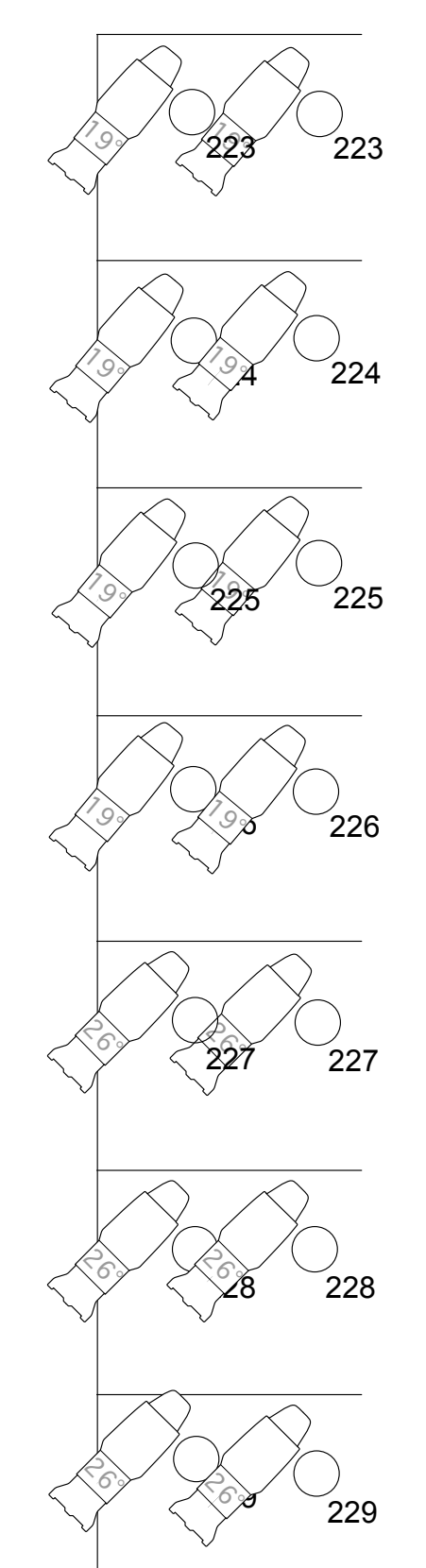
SHE LOVES ME
 MADISON OPERA '22
 Composite Ground Plan
 10.22.21
 1/4" = 1'-0"
 doug scholz-carlson, director
 r. eric stone, scenic designer



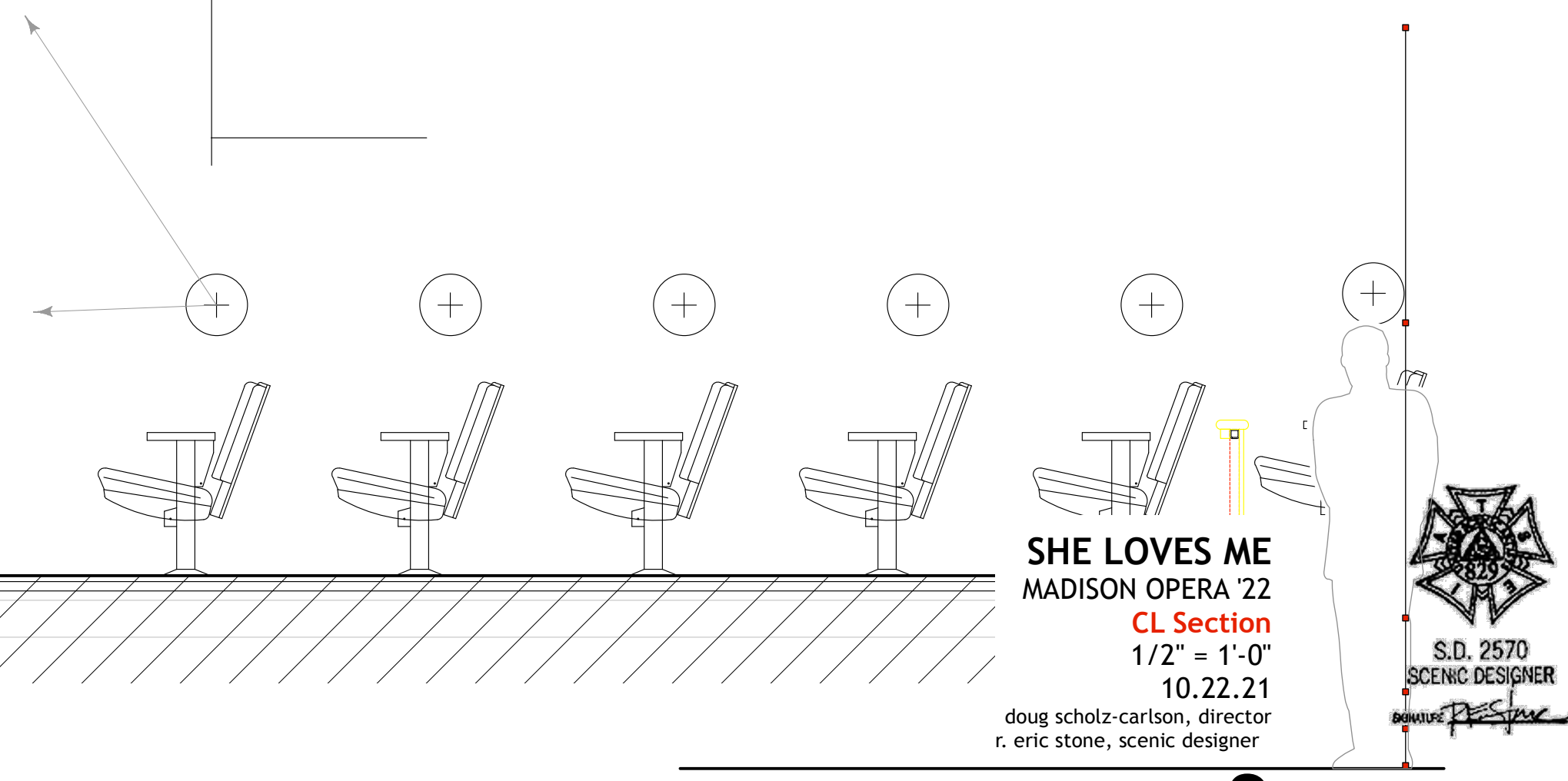
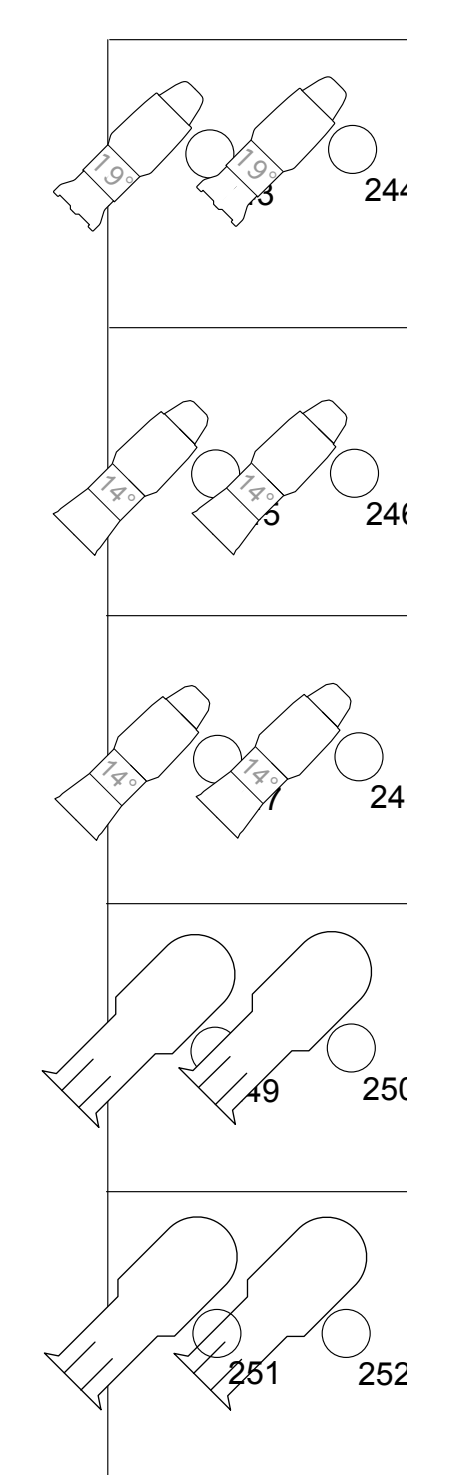


Box Boom Positions approximate from Plaster Line and Stage Level

Near Box

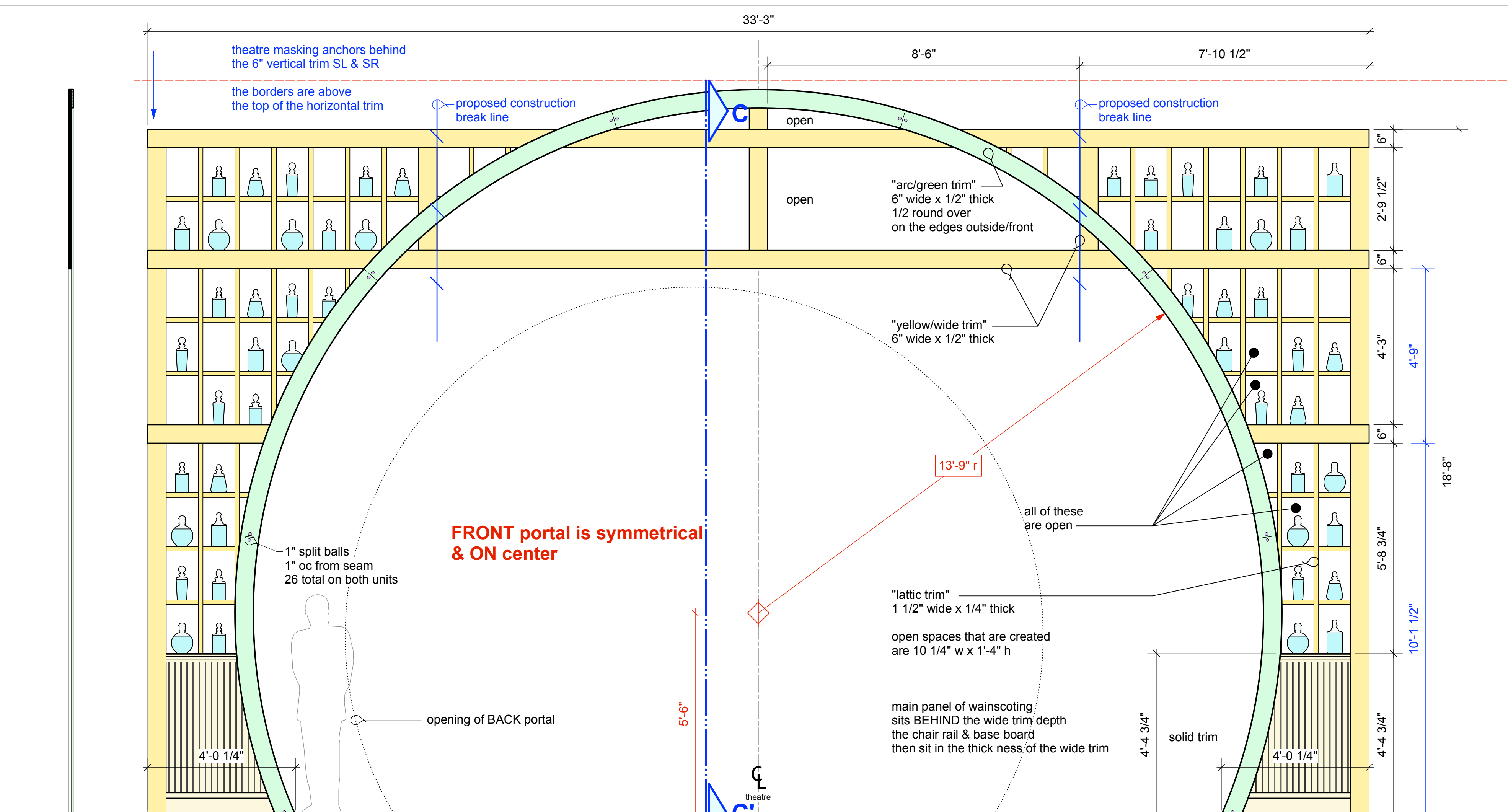


Far Box



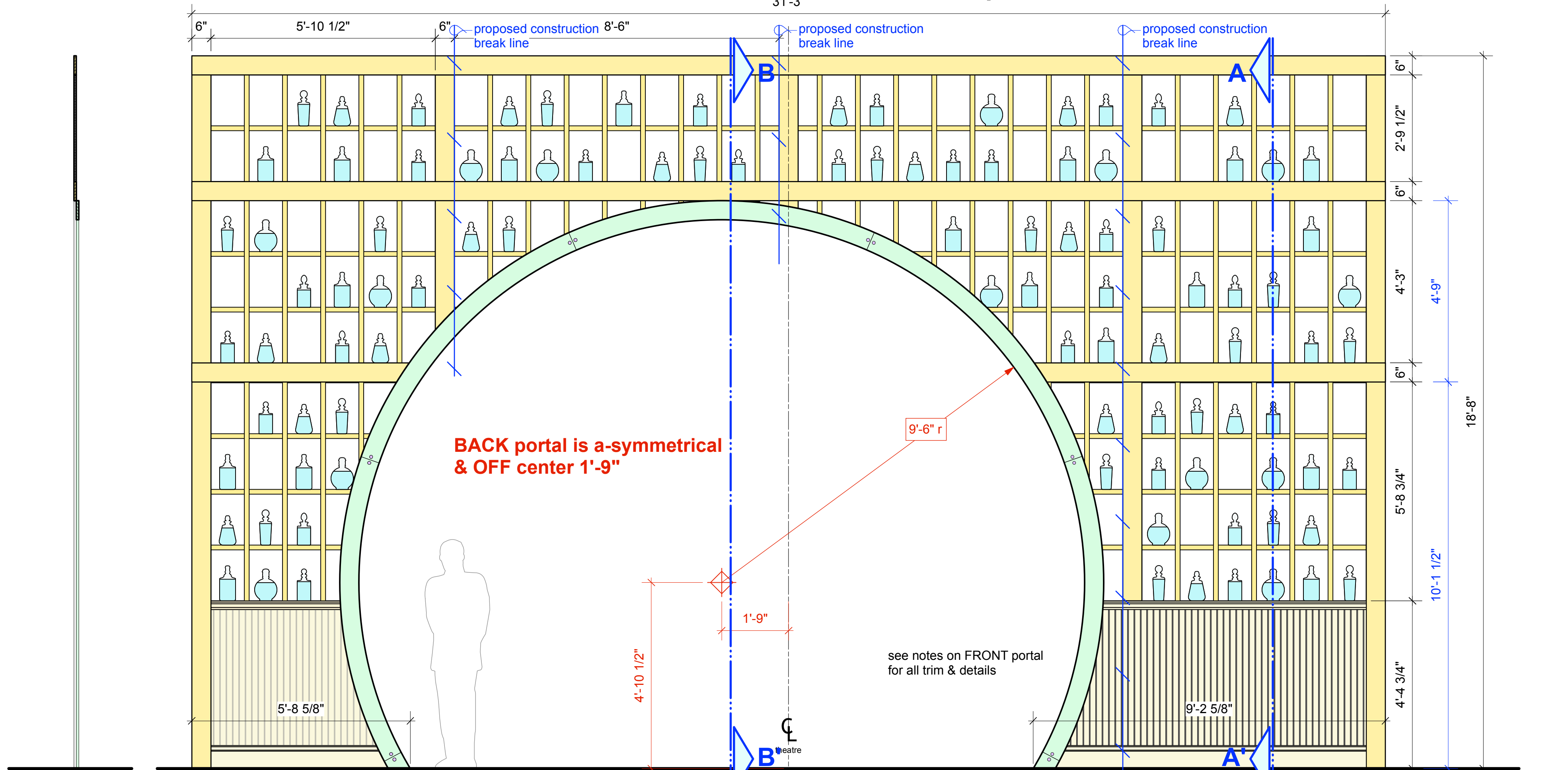
SHE LOVES ME
 MADISON OPERA '22
 CL Section
 1/2" = 1'-0"
 10.22.21
 doug scholtz-carlson, director
 r. eric stone, scenic designer





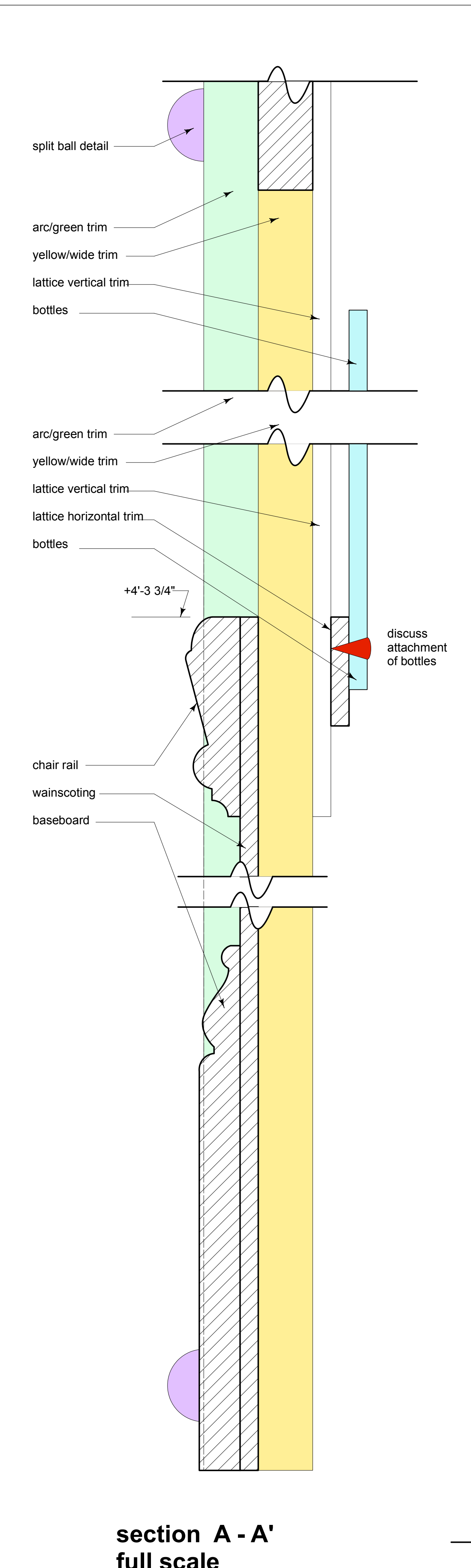
section C - C'

FRONT portal . 1/2" = 1'-0"

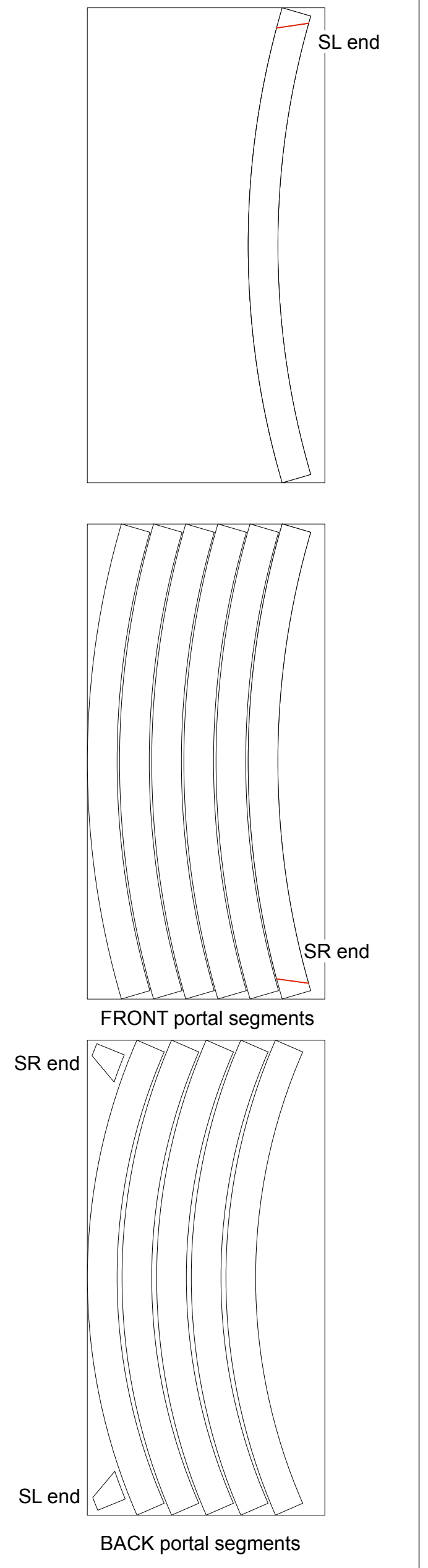


section B - B'

BACK portal . 1/2" = 1'-0"



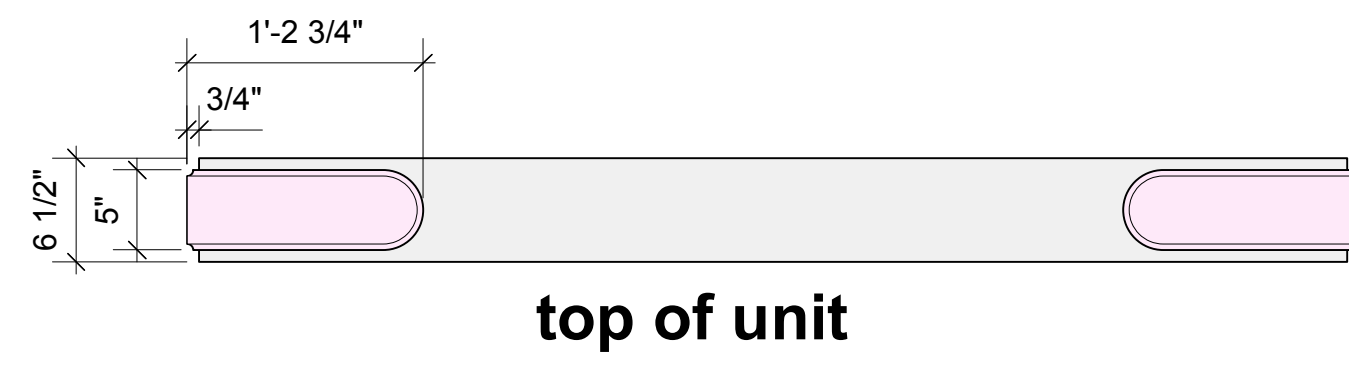
section A - A'
full scale



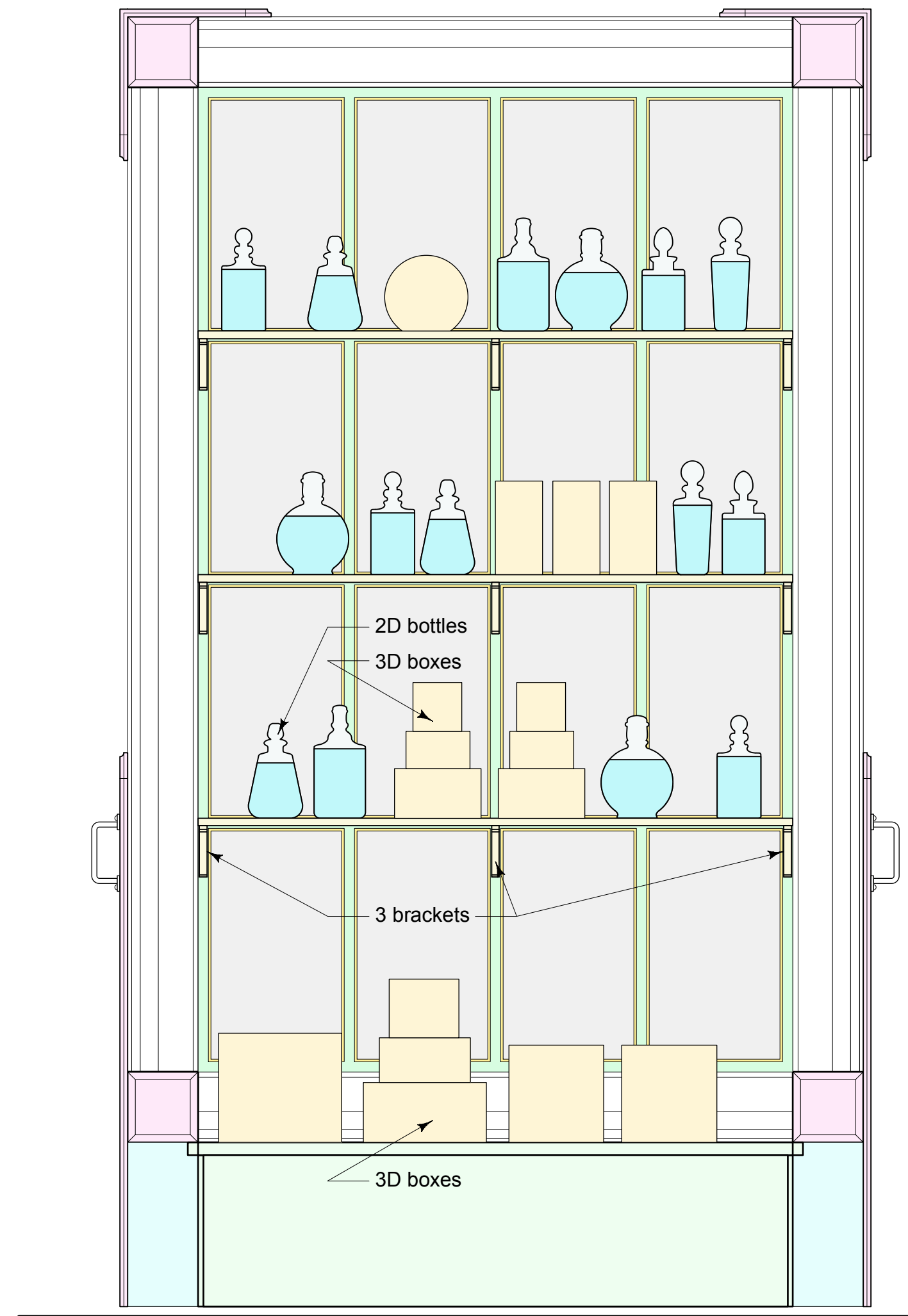
portal notes
 front portal hung on LS #17
 back portal hung on LS #29
 see plate #5 for wainscoting, chair rail and baseboard sources
 1" split ball (26 total needed)
<https://www.craftparts.com/product/1-split-balls/>
 \$7.50 for a pack of 50
 bottle silhouettes coming scene shop in Iowa City,
 coordinate with Eric attachment of
 bottles to back of horizontals
bottle count
 70 bottles per 4' x 8' sheet
 99 bottles on Back Portal
 52 bottles on Front Portal
 45 bottles for windows
 196 total drawn
 3 CNC sheets needed yields 210 units

SHE LOVES ME
 MADISON OPERA '22
Front & Back Portals
 1/2" = 1'-0"
 10.22.21
 doug scholz-carlson, director
 r. eric stone, scenic designer

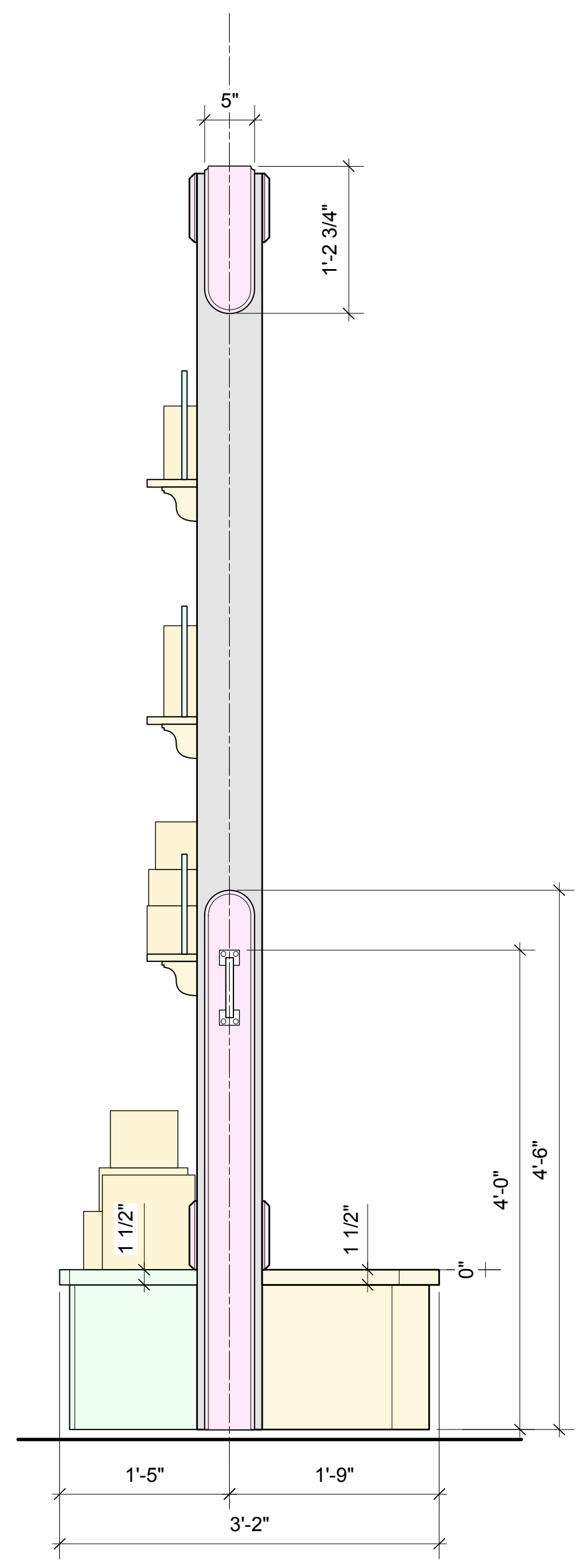




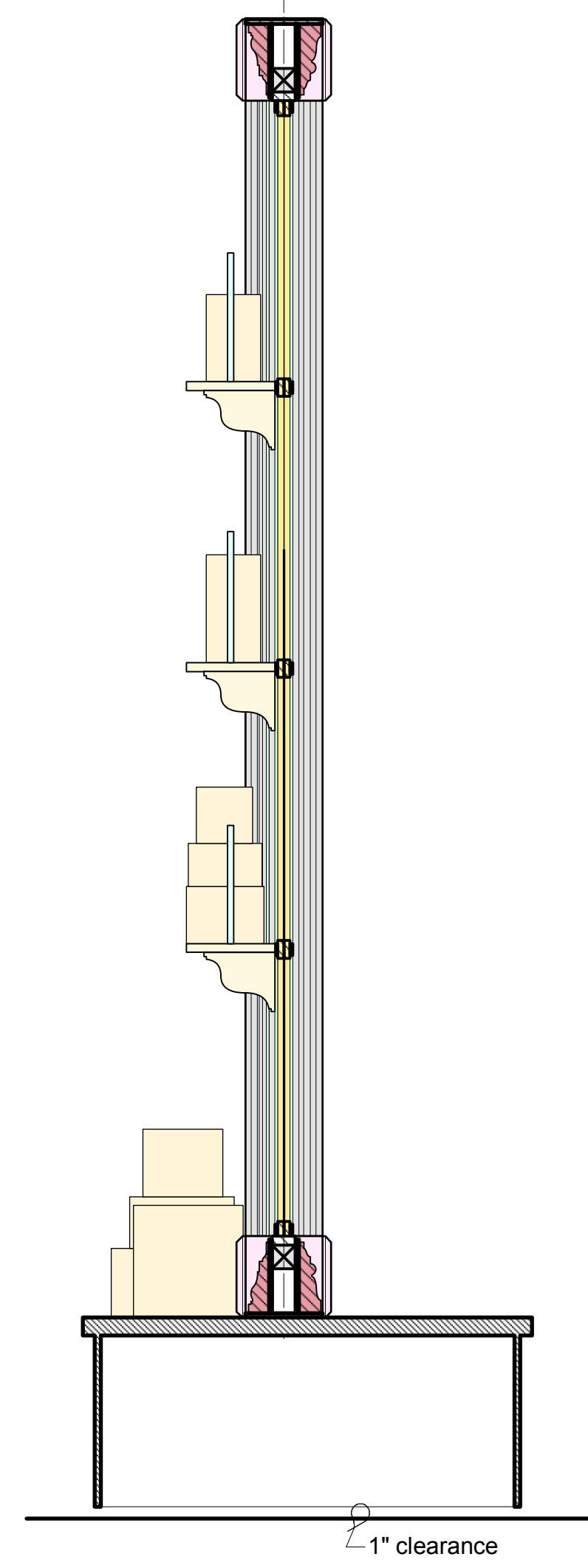
top of unit



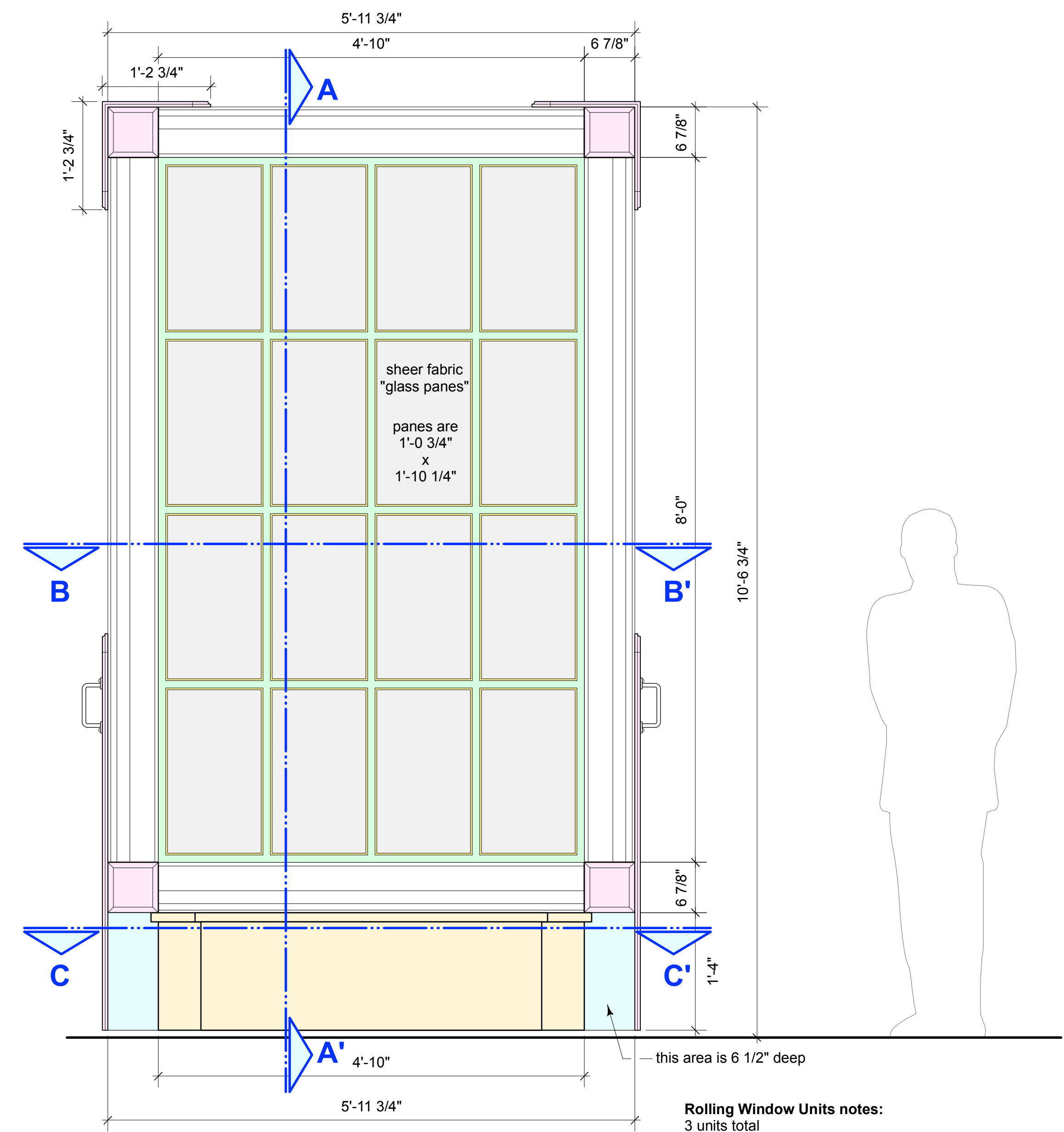
front view INSIDE shop



side view



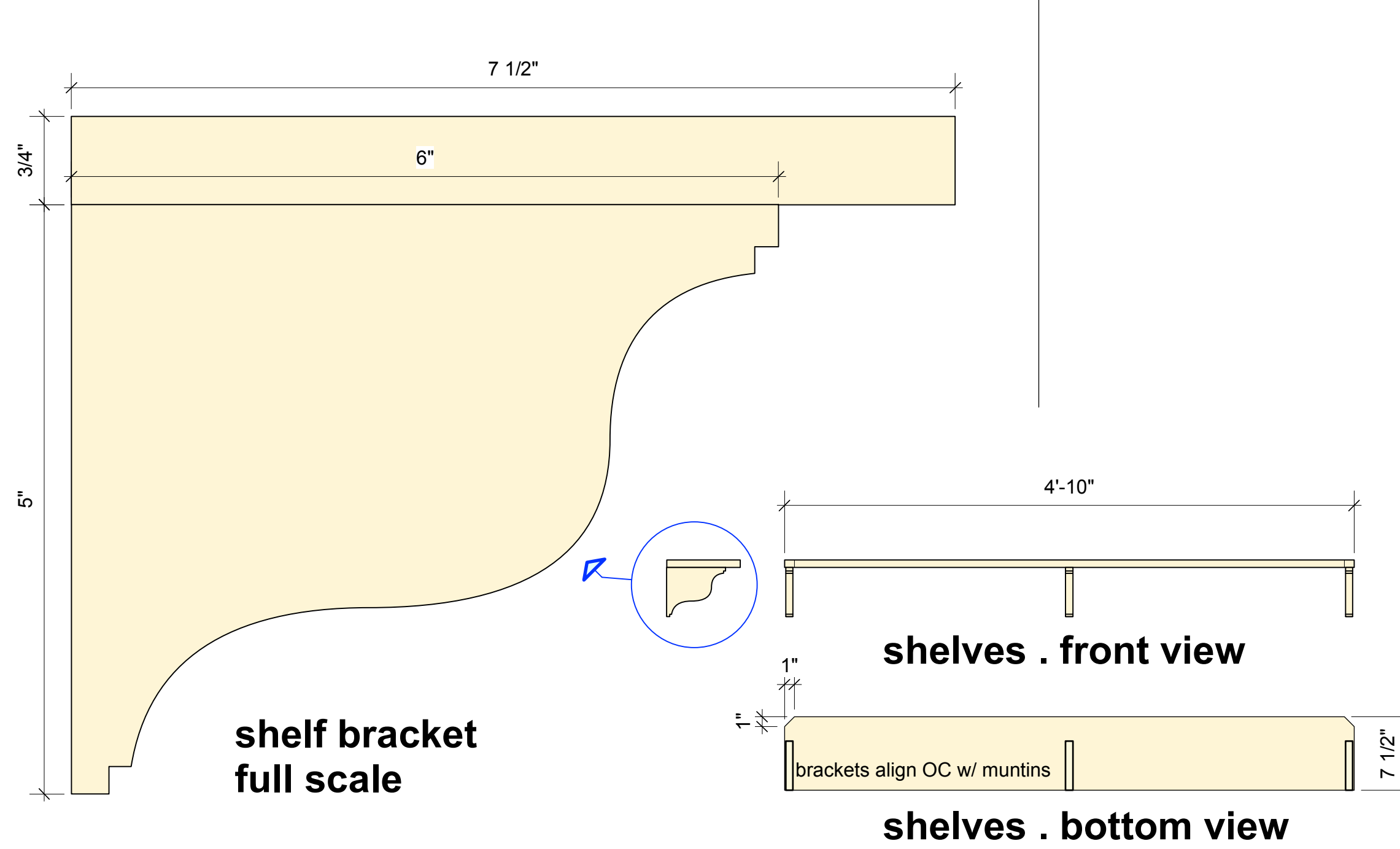
section A - A'



front view OUTSIDE shop

Rolling Window Units notes:
 3 units total
 units roll around the space...leave the stage temporarily at intermission
 OUTSIDE seat is sat on
 INSIDE base shelf stores small boxes & gifts
 Potential "D Handle" source (6 total needed)
<https://www.etsy.com/listing/1093951441/pair-of-aztec-cast-iron-rustic-vintage?gpla=1&gao=1&>

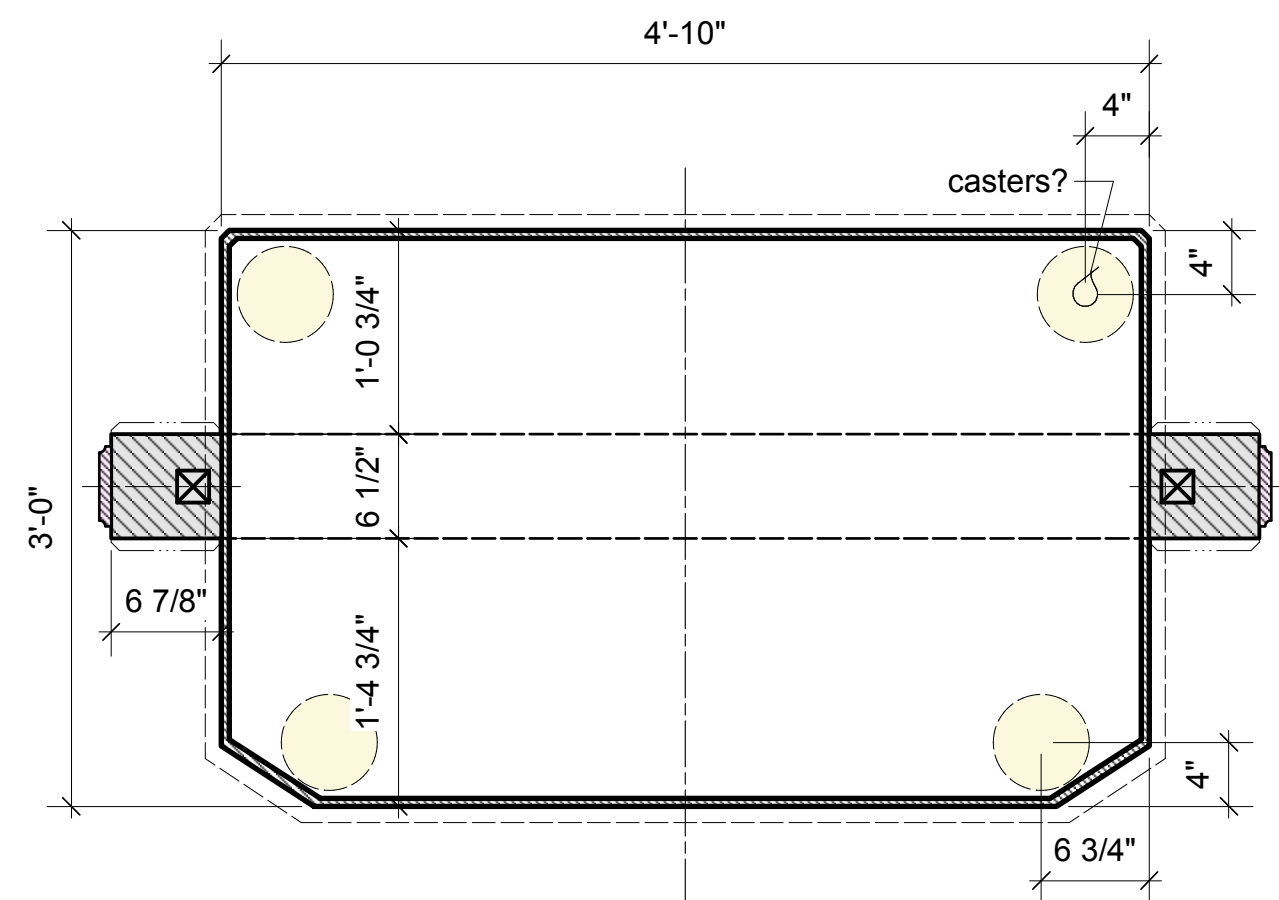
paint:
 light gray-scale w/ toning



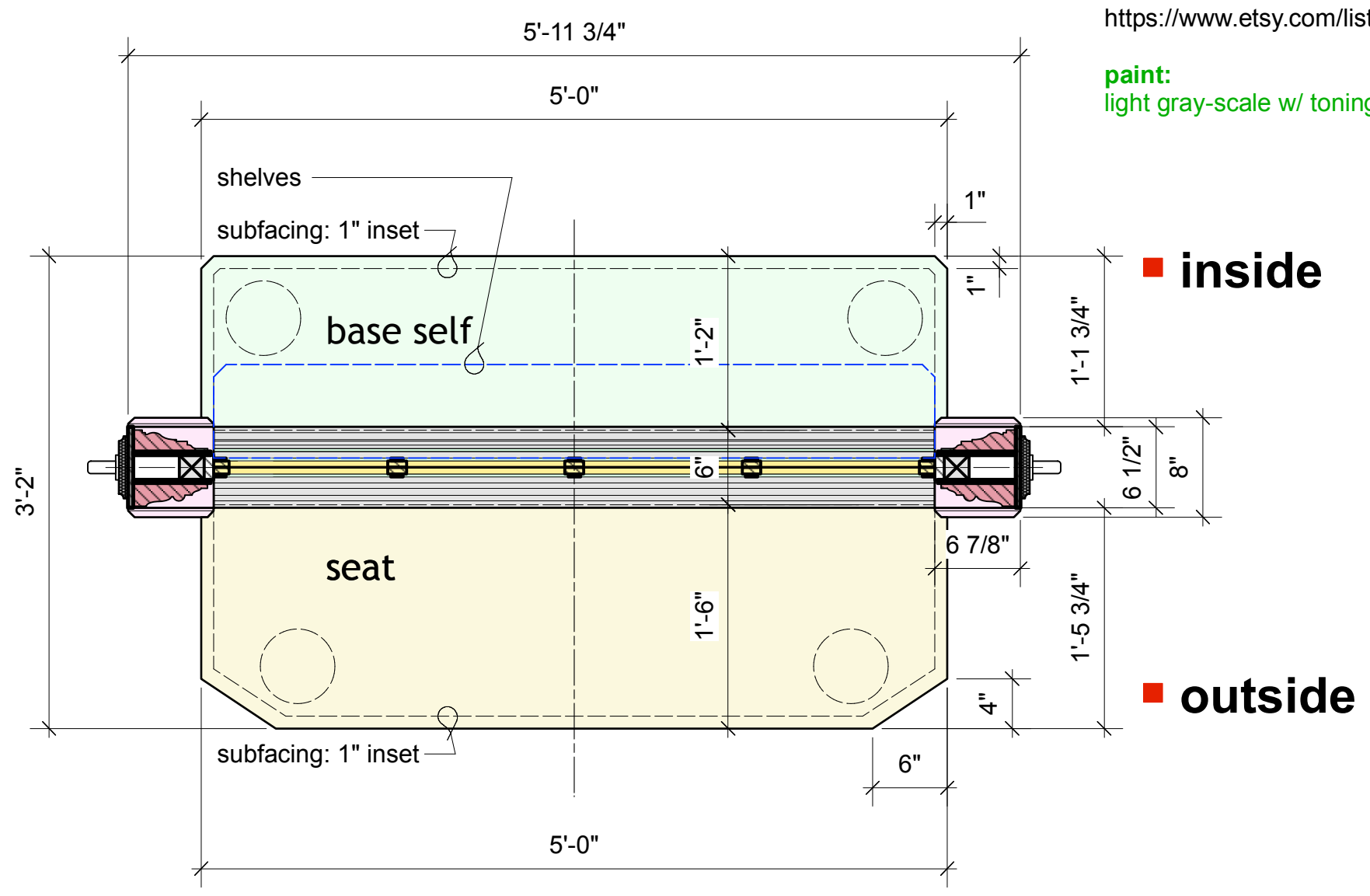
shelf bracket full scale

shelves . front view

shelves . bottom view



section C - C'

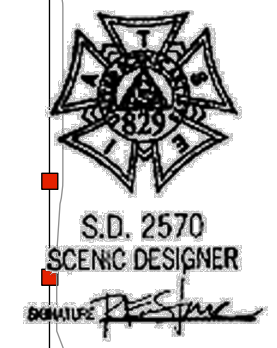


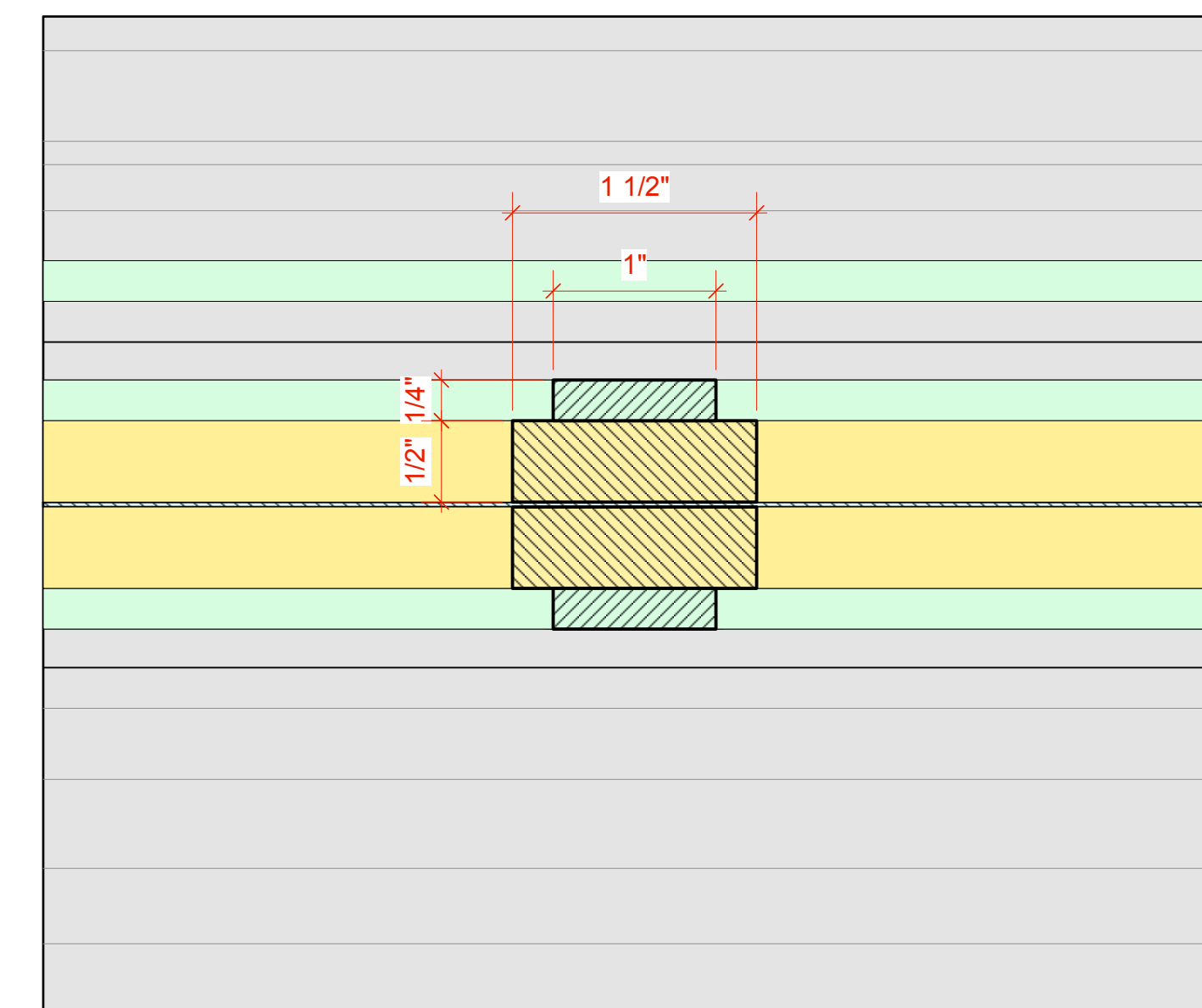
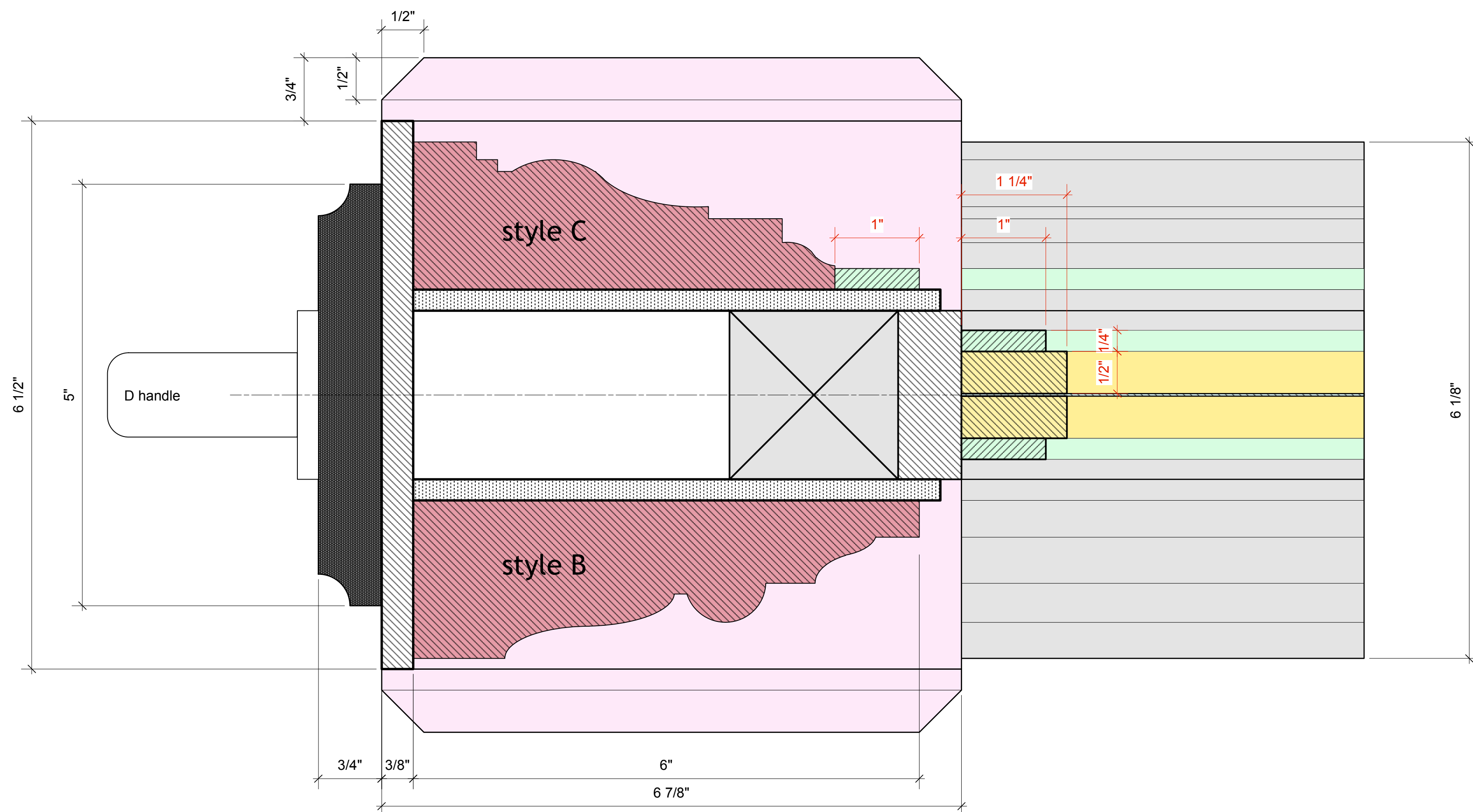
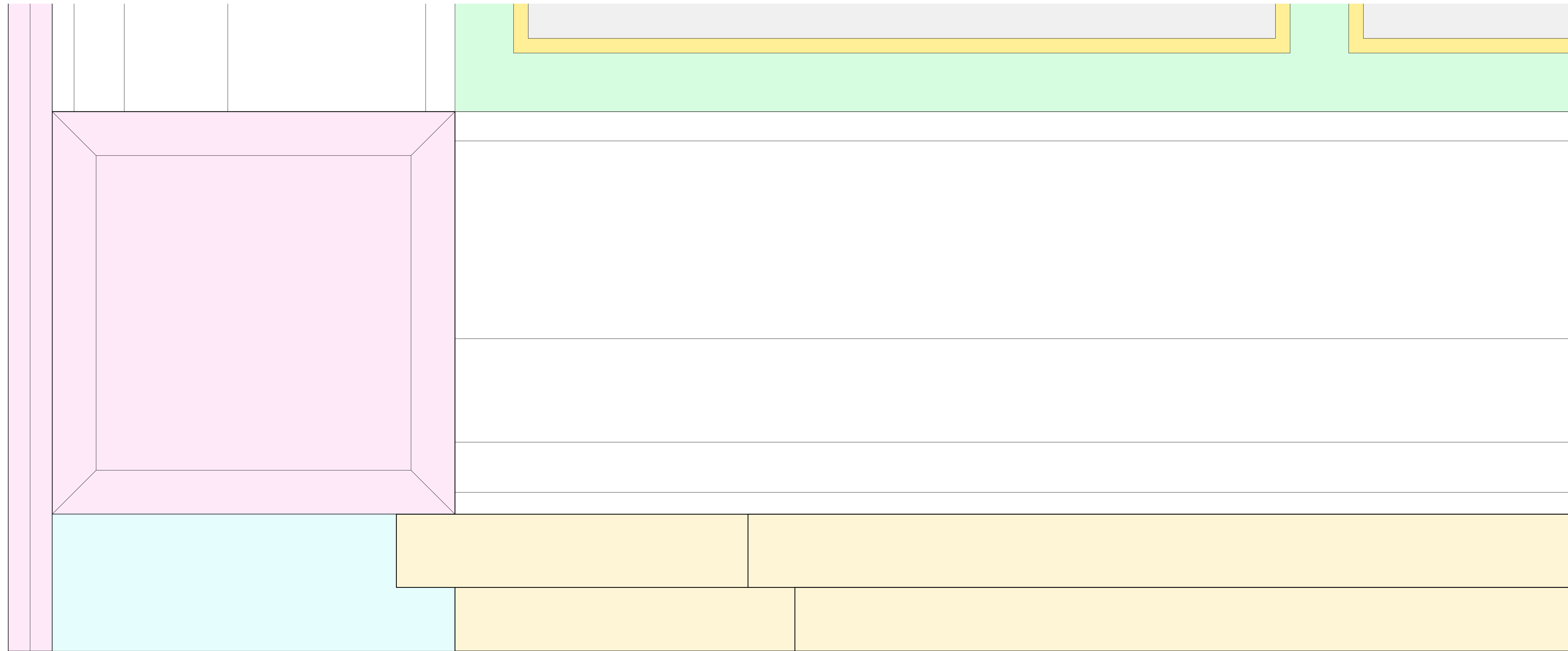
plan view . section B - B'

■ inside

■ outside

SHE LOVES ME
 MADISON OPERA '22
 Rolling Windows
 1" = 1'-0", unless noted
 10.22.21
 doug scholtz-carlson, director
 r. eric stone, scenic designer

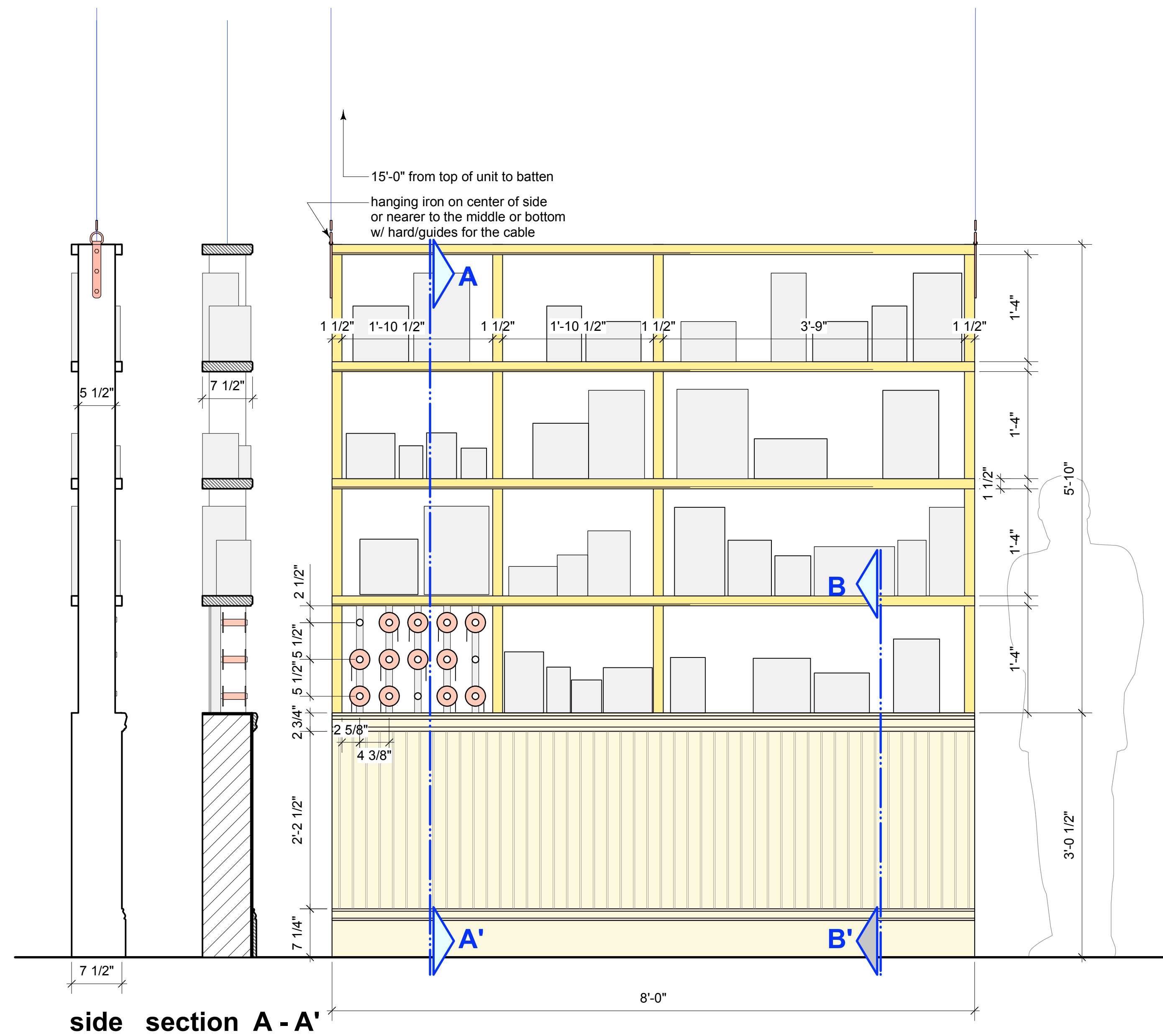




SHE LOVES ME
 MADISON OPERA '22
 Rolling Windows
 full scale
 10.22.21



S.D. 2570
 SCENIC DESIGNER
 doug scholz-carlson, director
 r. eric stone, scenic designer



side section A - A'

■ workshop shelf . front view . 1" = 1'-0"

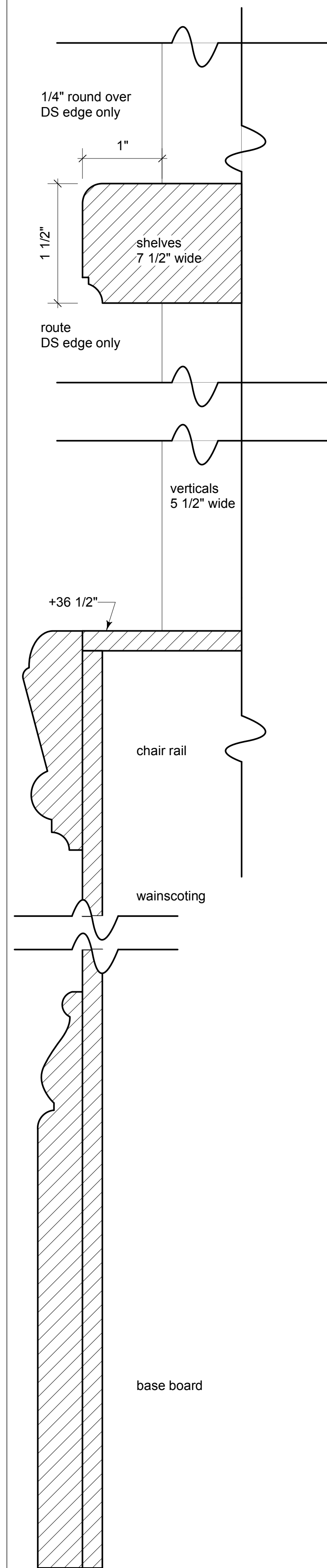
Workroom Fly notes:
rigged to LS #9
15'-0" from top of unit to batten
unit flies out 24'-0" to get out of slight lines
7.5" deep shelving
3d items on the shelves for working/packaging/wrapping

paint:
like the portal, light gray-scale w/ toning

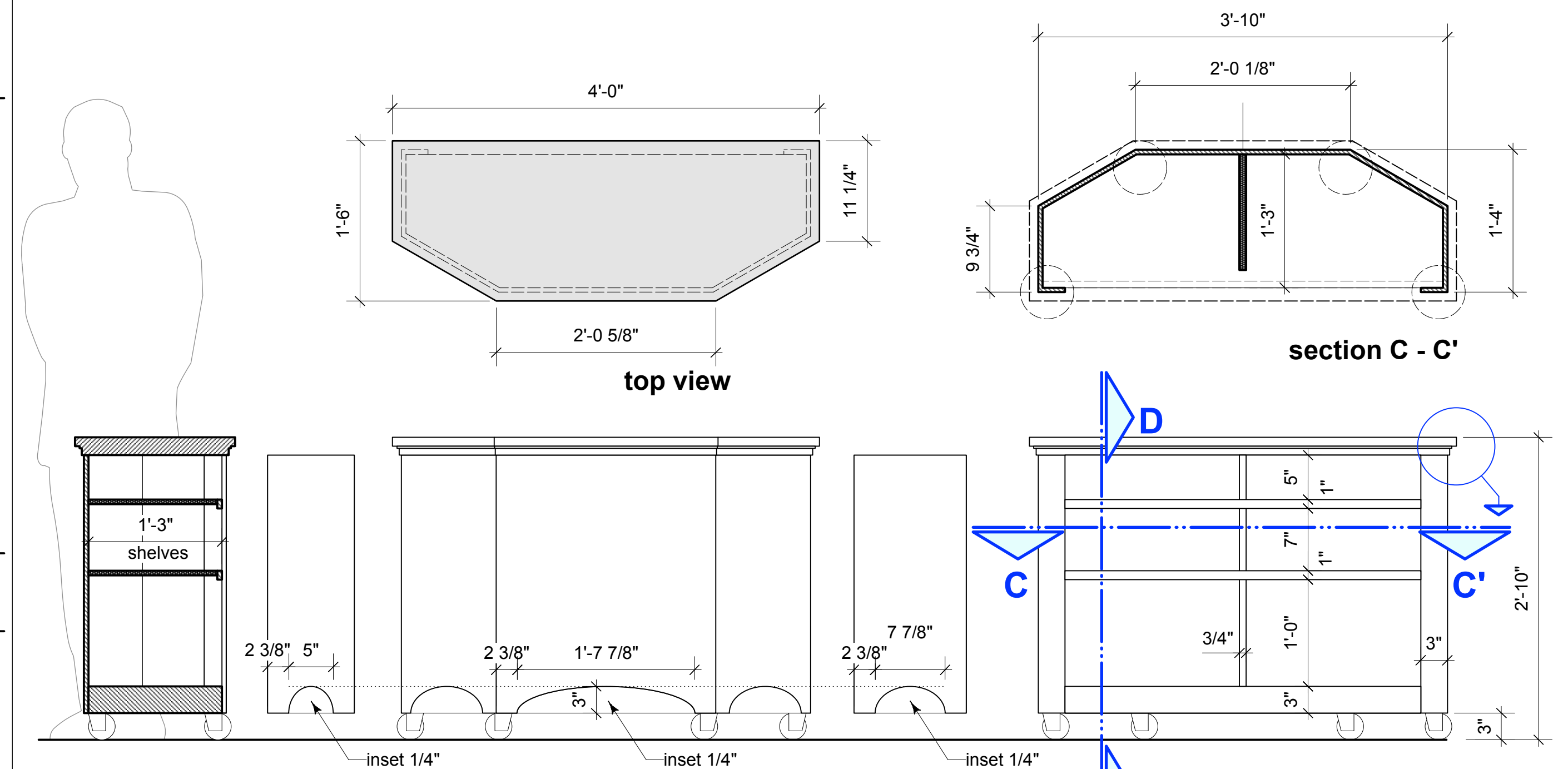
WAINSCOTING
DPI™ Beadboard 4' x 8' Pinetex Wall Panel
Model Number: 163 Menards © SKU: 5052024
\$21
<https://www.menards.com/main/paint/paneling-planking/paneling/dpi-trade-beadboard-4-x-8-pinotex-wall-panel/163/p-1444428737545-c-8168.htm?tid=88687456916687646&ipos=6>

CHAIR RAIL
1760 Millwork 3/4 x 2-3/4 x 12' Primed Poplar Chair Rail Moulding
Model Number: 1760CH1002PO275-12PFPFR
\$43
<https://www.menards.com/main/doors-windows-millwork/moulding/all-unfinished-trims/1760-millwork-3-4-x-2-3-4-poplar-chair-rail-mouldings/1760ch1002po275-12pfpfr/p-1527575369338.htm>

BASE BOARD
Mastercraft® 9/16 x 7-1/4 x 12' Primed Poplar Colonial Base Moulding L738
Model Number: 4179043 Menards © SKU: 4179043
** BUT, this could be a simple ~6" tall 1x pieces, with a thinner ogee trim on top **
<https://www.menards.com/main/doors-windows-millwork/moulding/all-unfinished-trims/mastercraft-reg-9-16-x-7-1-4-primed-poplar-colonial-base-mouldings-1738/4179043/p-1469036035924-c-7607.htm?tid=3669511091299395846&ipos=1>



section B - B'
full scale

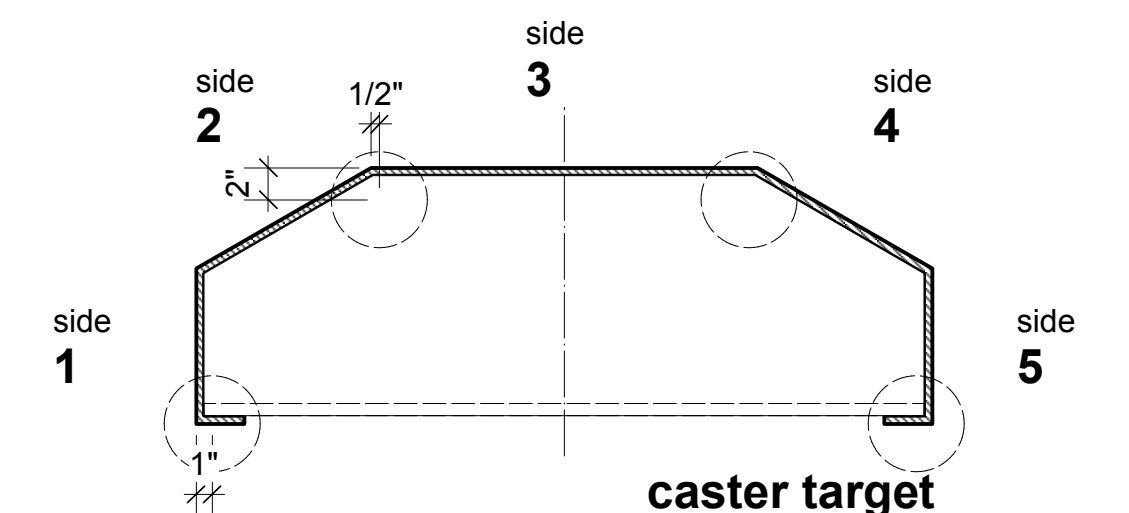
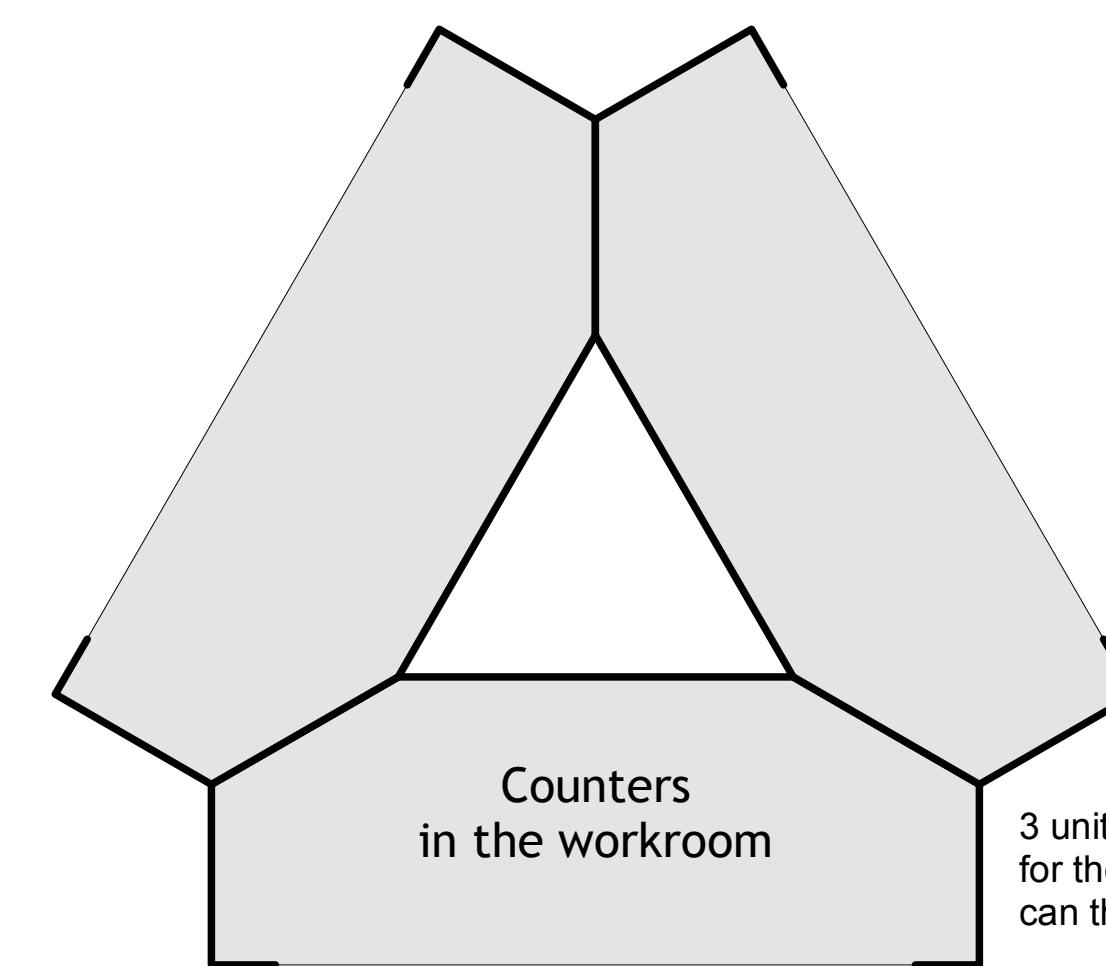


section D - D' side 1 & 5

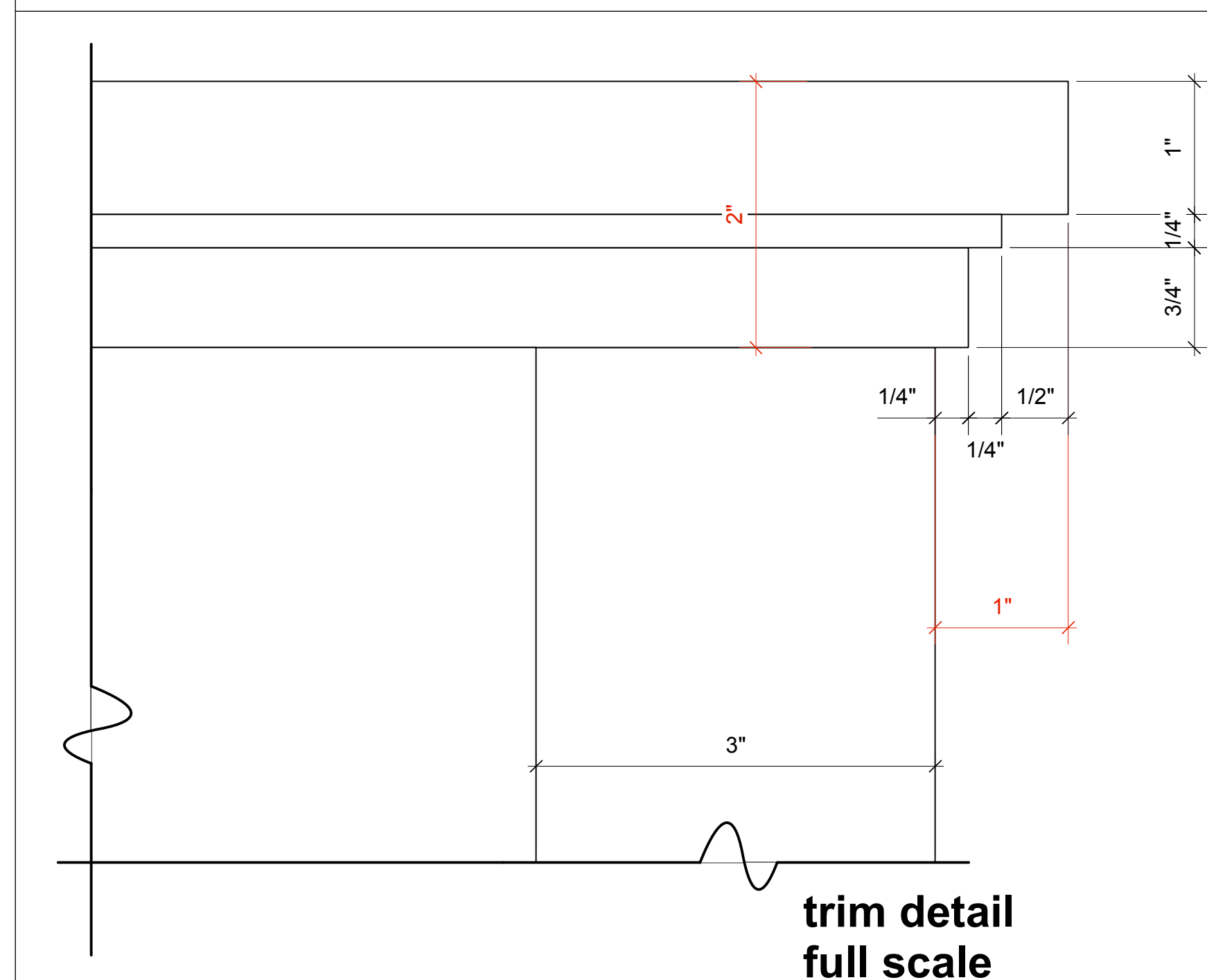
side 3

side 2 & 4

back view



■ counters . 1" = 1'-0"

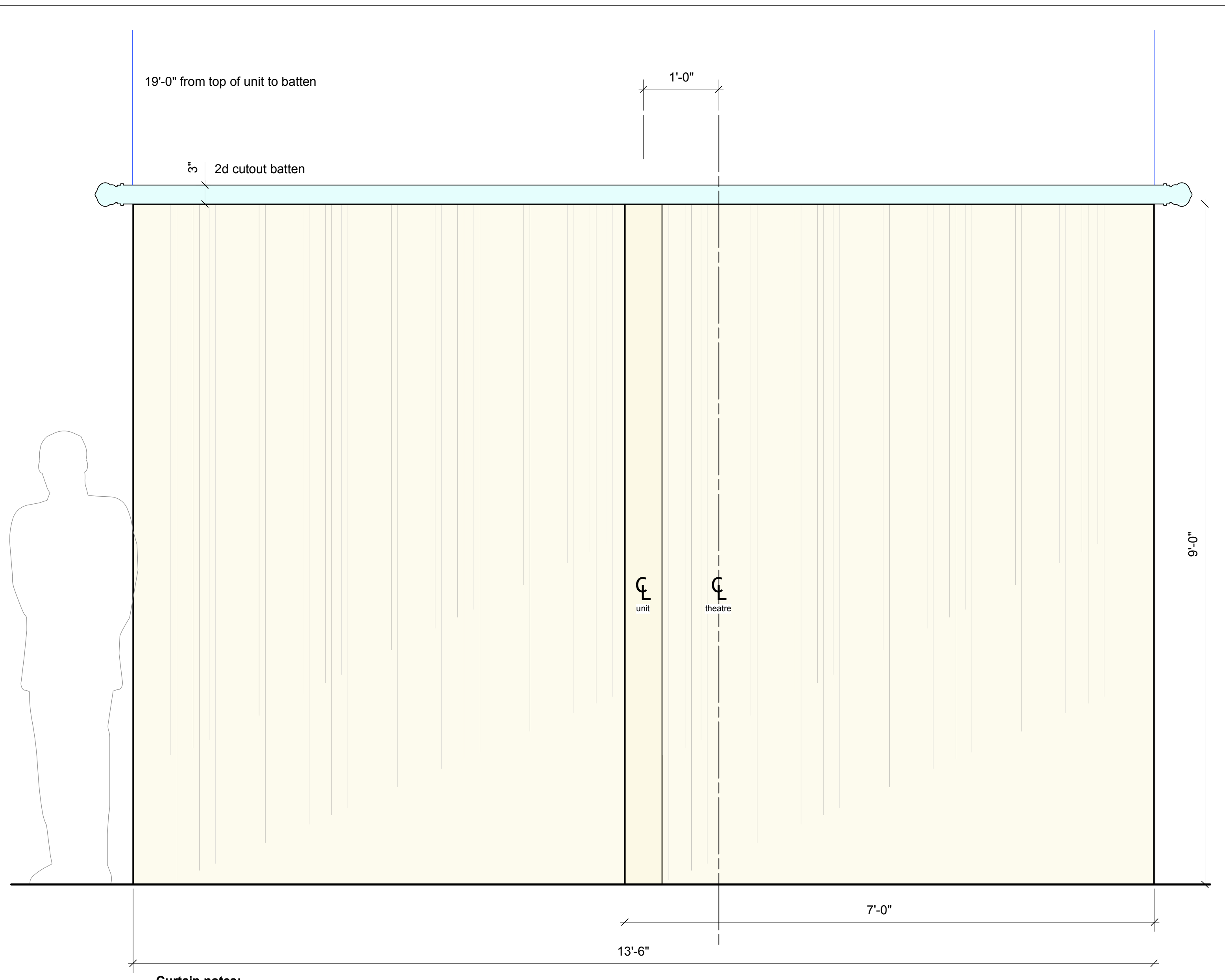


Counter Units notes:
3 units total
units roll around the space...lots of choreography
top of units are sat on inside/back shelves are filled with props/dressing

paint:
dark wood semi-gloss finish

SHE LOVES ME
MADISON OPERA '22
Workroom Shelf, Counters
scale as noted
10.22.21
doug scholz-carlson, director
r. eric stone, scenic designer

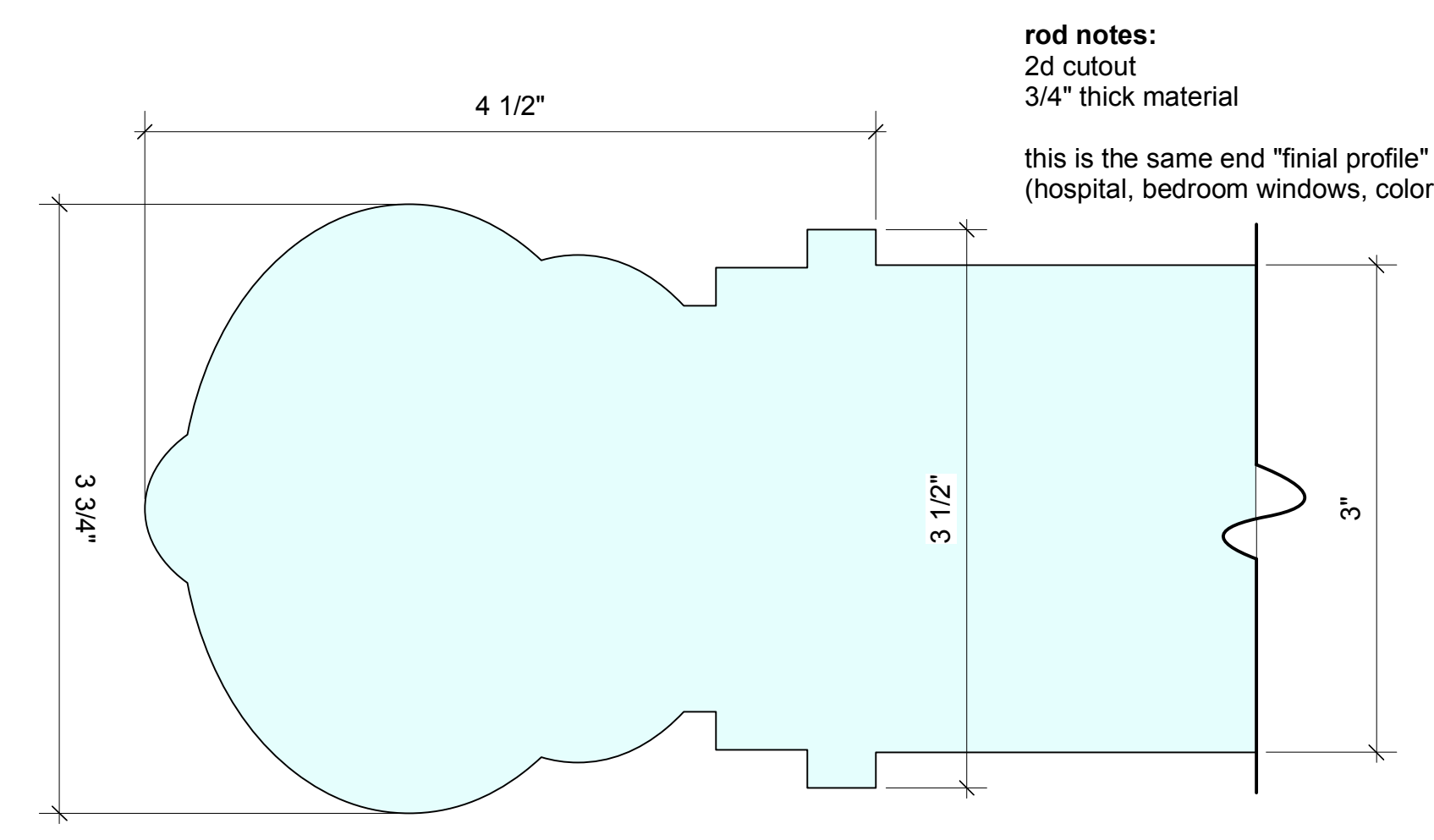




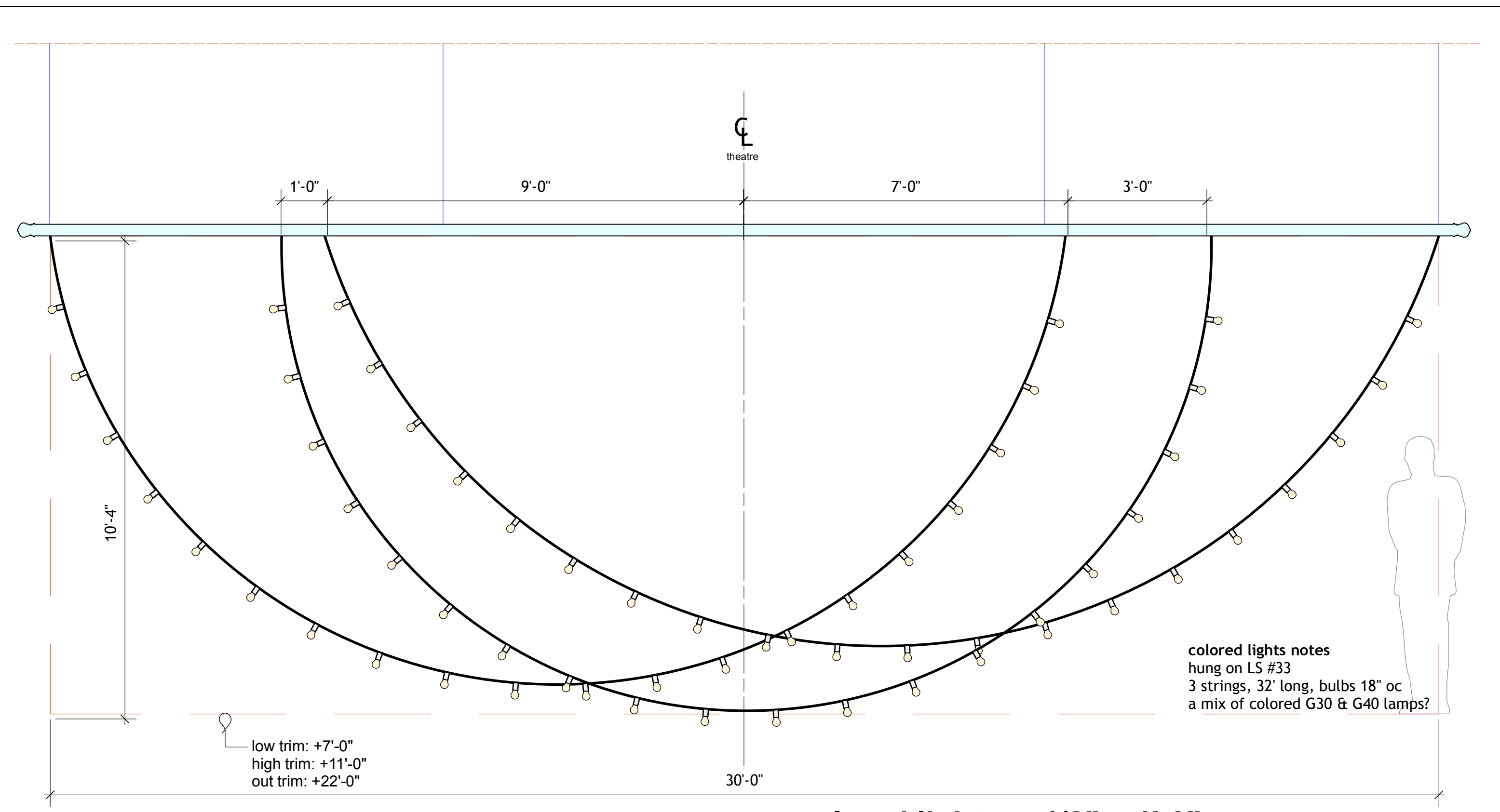
Curtain notes:
 rigged to LS #15
 sheer fabric w/ 50% fullness
 19'-0" from top of unit to batten

COLOR: CLOUD
 118" Voile, IFR
 Cut \$6.75, 6 yards total
<https://www.rosebrand.com/product1212/118-Voile-IFR.aspx?id=1212&cid=161&idx=1&tid=1&info=Sheer%2bFabrics>

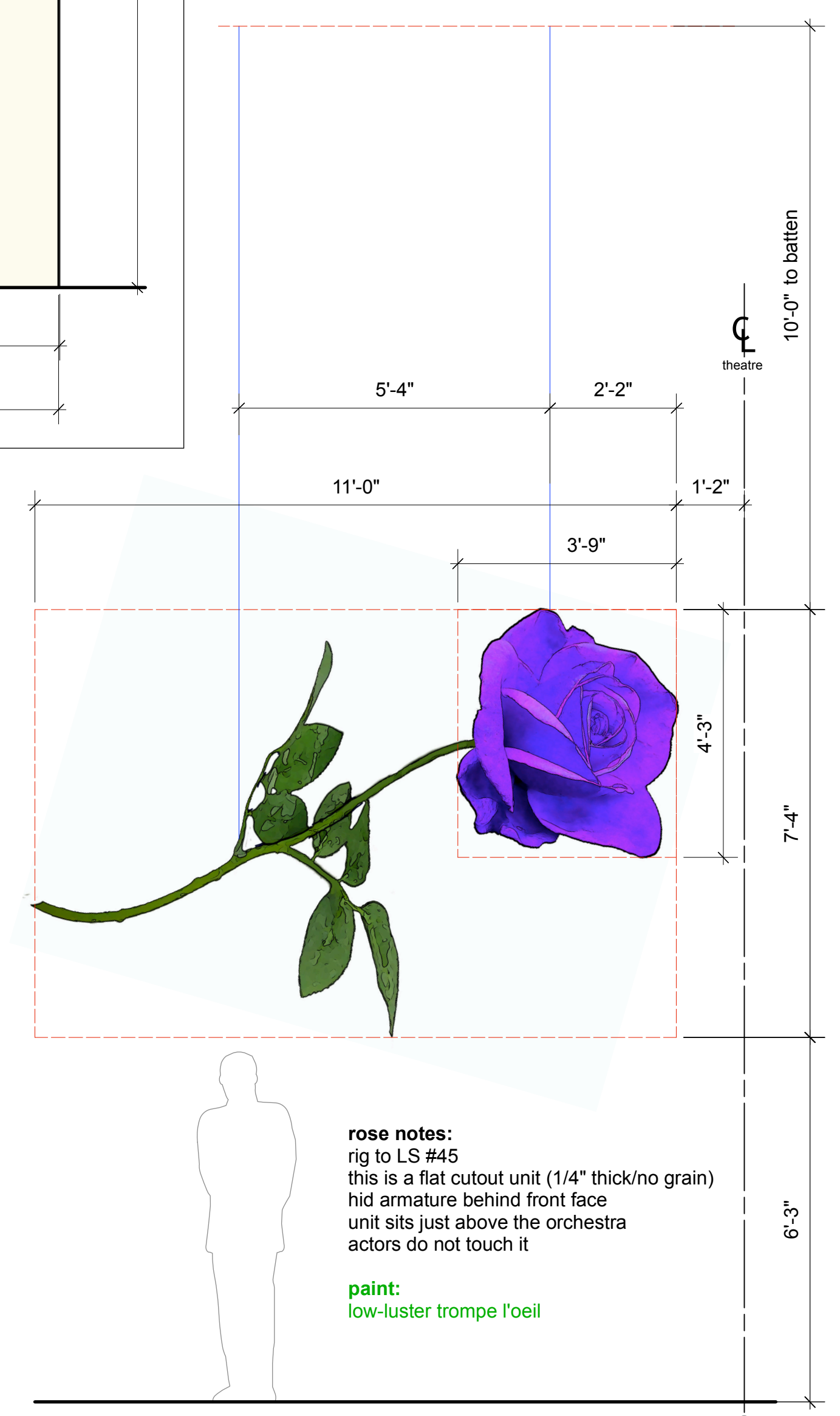
■ hospital curtain . 1" = 1'-0"



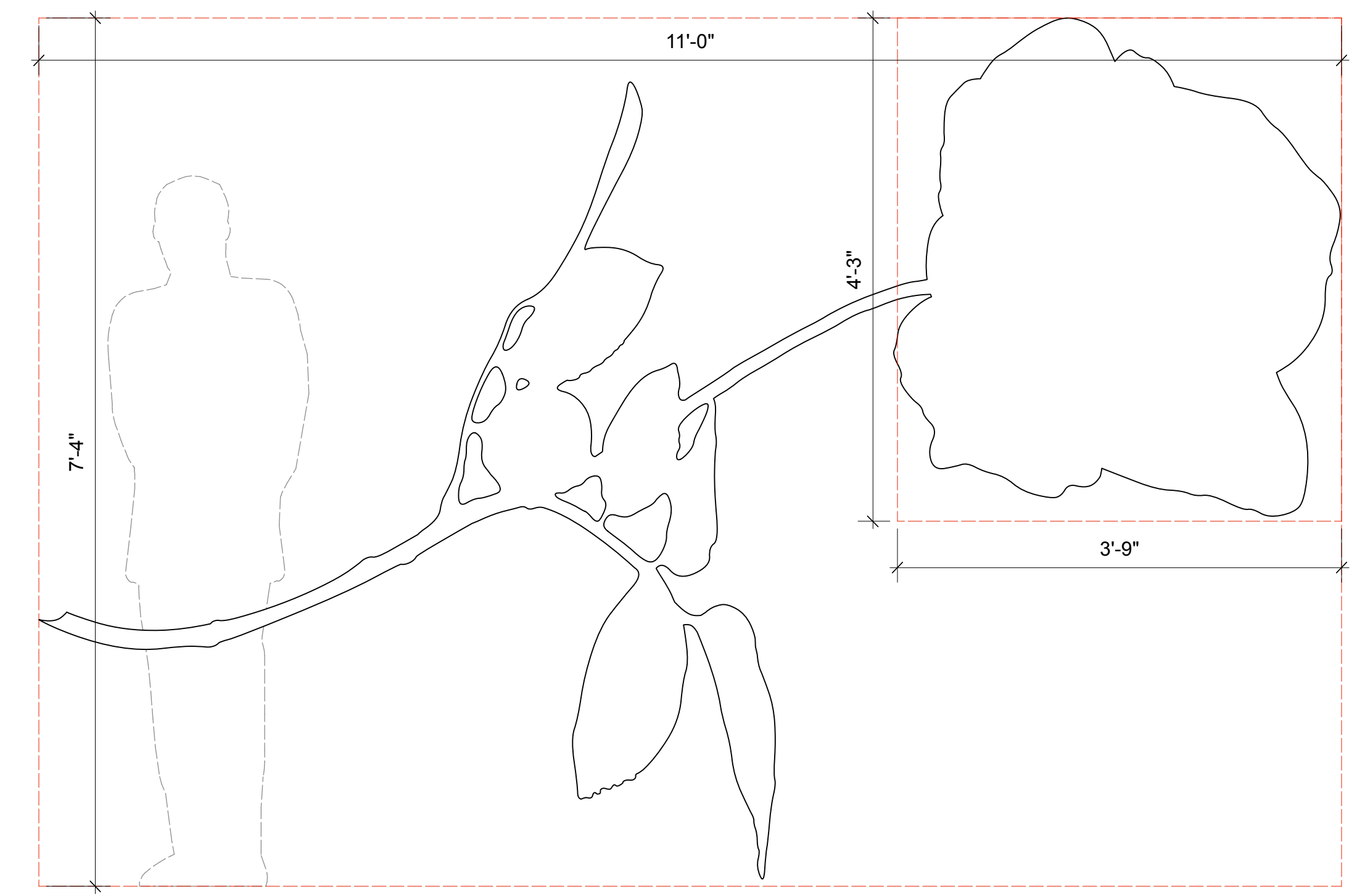
■ hospital curtain rod detail . full scale



■ colored lights . 1/2" = 1'-0"



■ rose . 1/2" = 1'-0"



■ rose detail/silhouette . 1" = 1'-0"

SHE LOVES ME
 MADISON OPERA '22
 Rose, Colored Lights, Hospital Curtain
 scale as noted
 10.22.21
 doug scholz-carlson, director
 r. eric stone, scenic designer

S.D. 2570
 SCENIC DESIGNER

