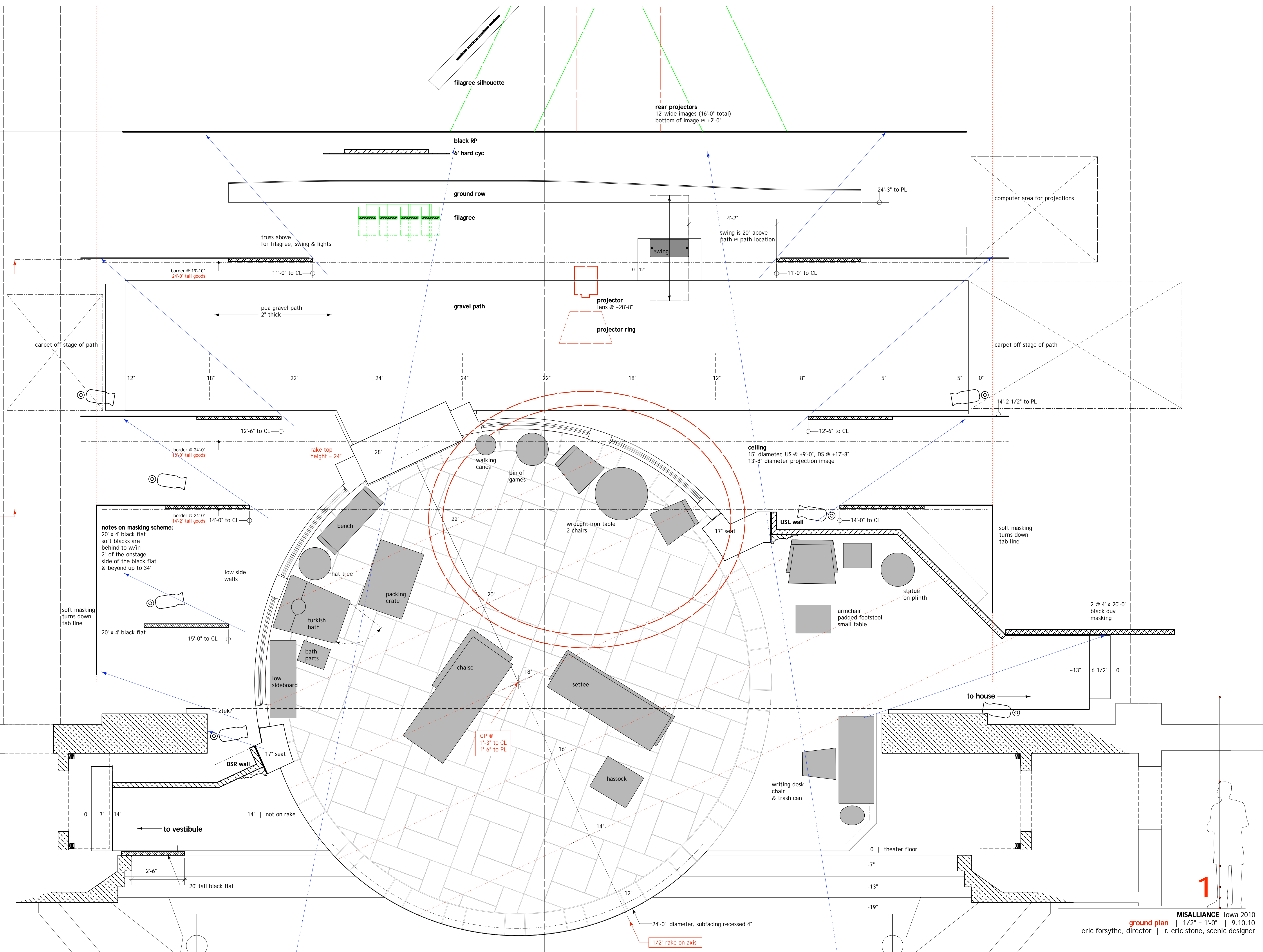


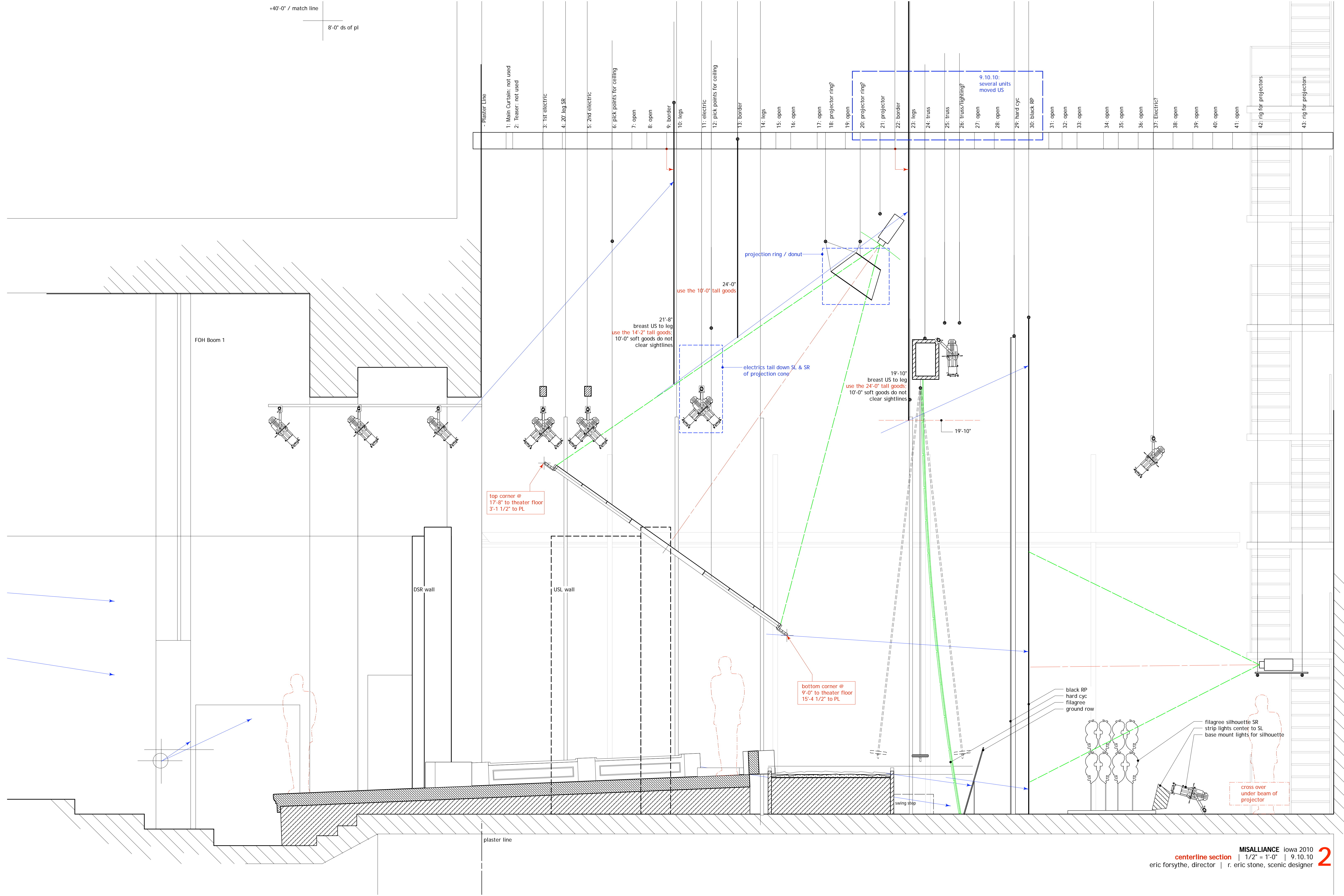
- 36: open
- 35: open
- 34: open
- 33: open
- 32: open
- 31: open
- 30: black RP
- 29: hard cyc
- 28: open
- 27: open
- 26: truss / lights?
- 25: truss
- 24: truss
- 23: legs
- 22: border
- 21: projector
- 20: projector rig
- 19: open
- 18: projector rig
- 17: open
- 16: open
- 15: open
- 14: legs
- 13: border
- 12: pick points
- 11: Electric?
- 10: legs
- 9: border
- 8: open
- 7: focus track
- 6: pick points
- 5: 2nd Electric
- 4: 20' leg SR
- 3: 1st Electric
- 2: Teaser / not used
- 1: Main Curtain / not used
- Plaster Line



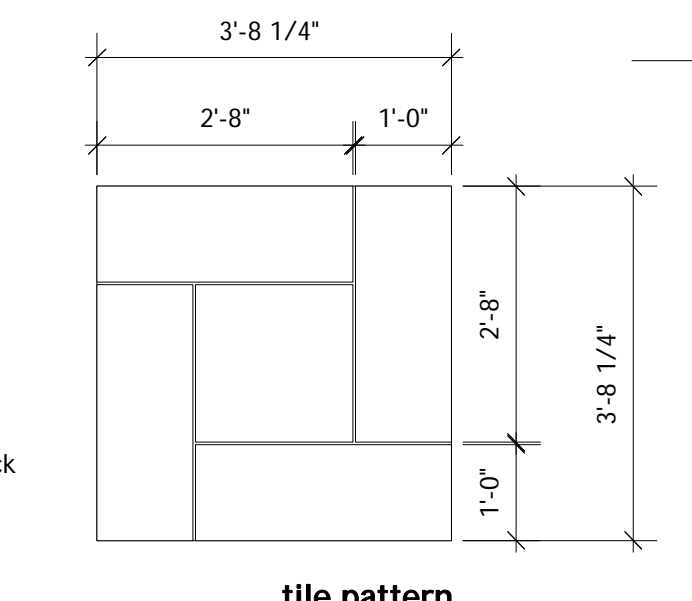
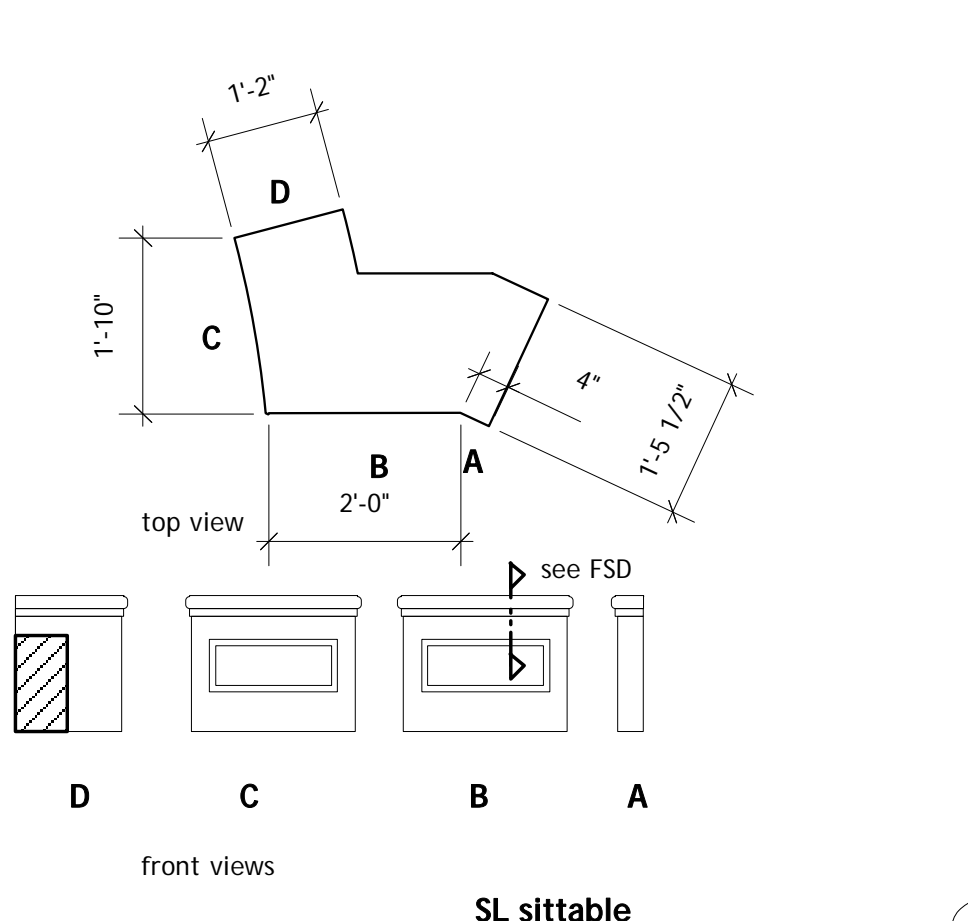
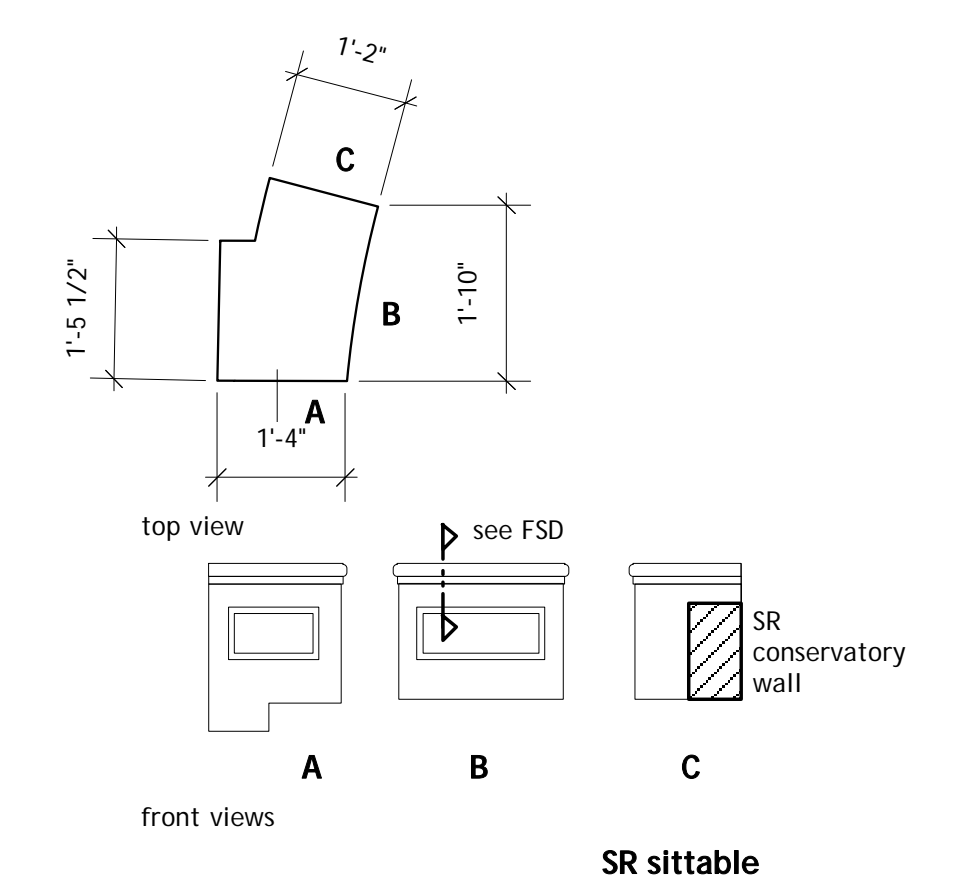
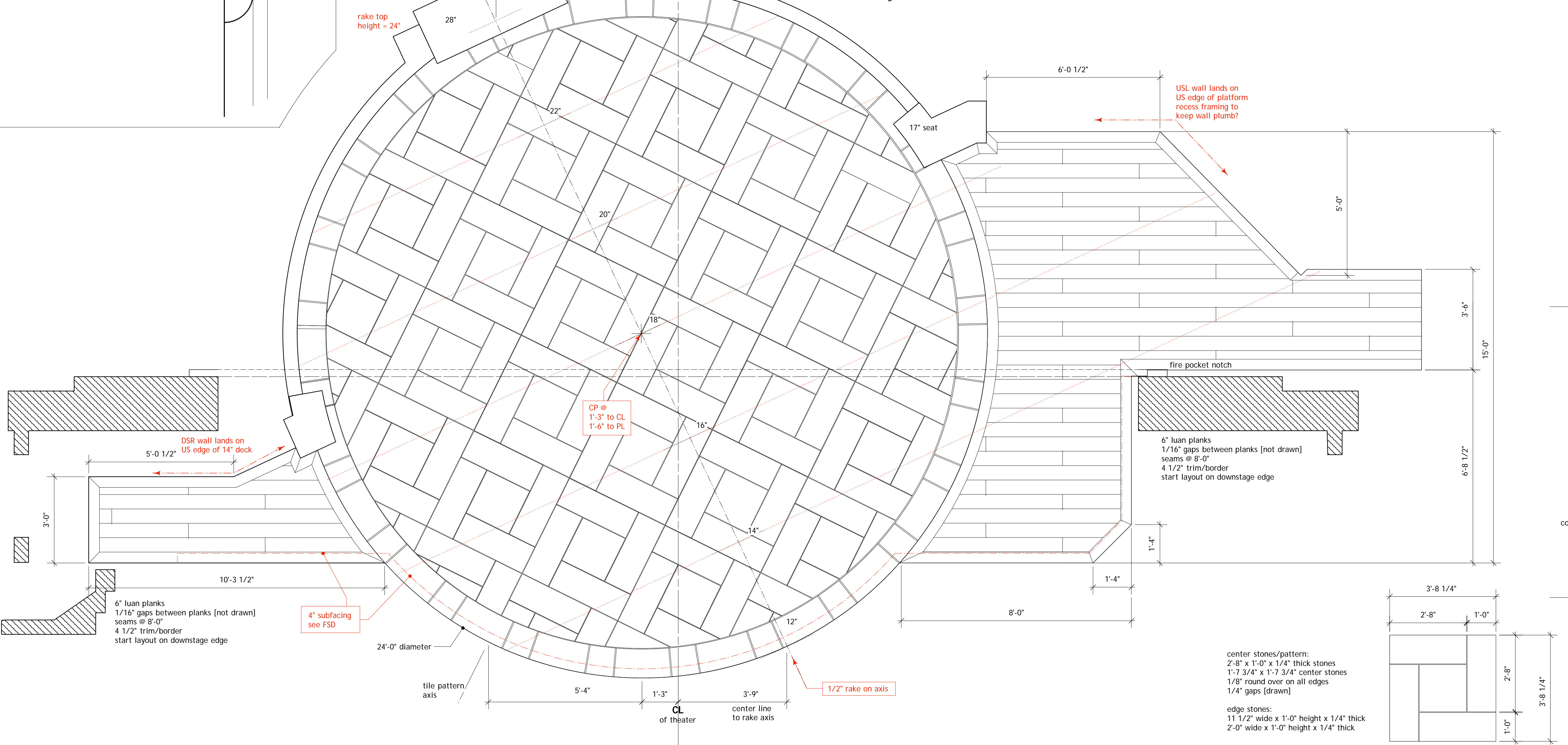
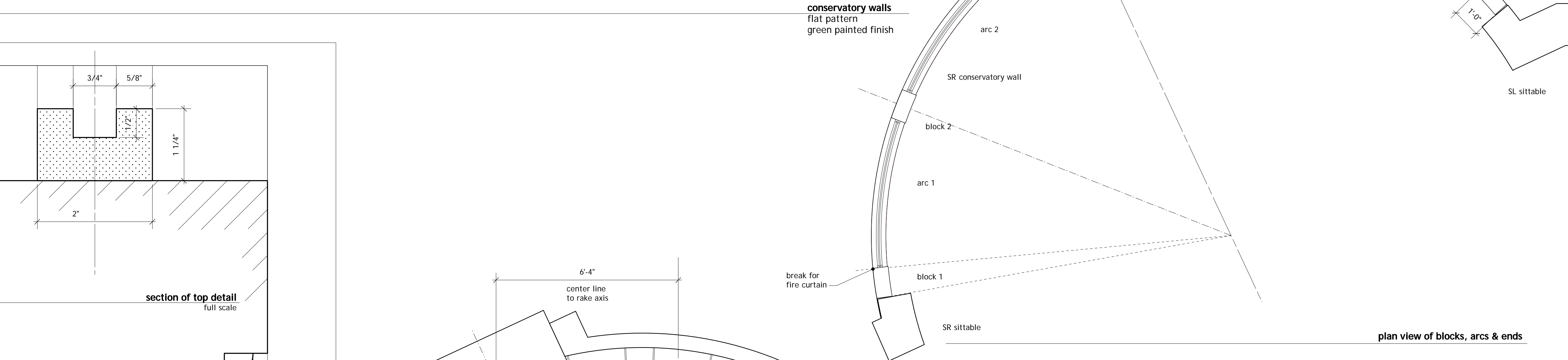
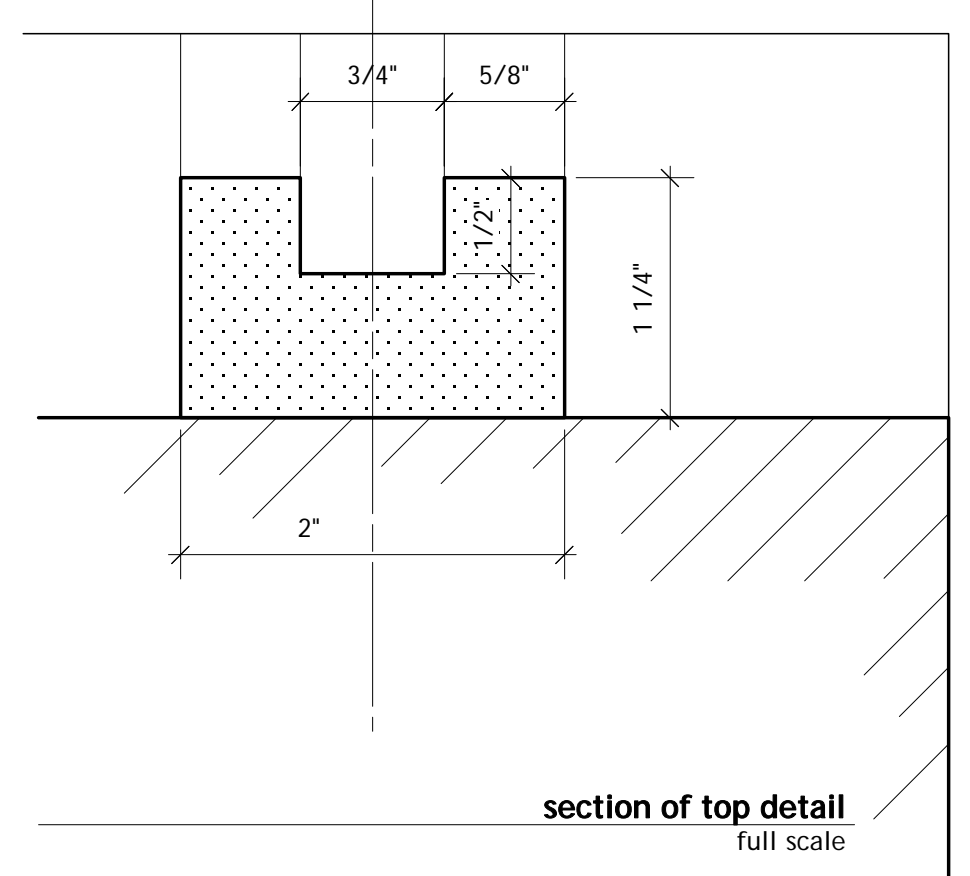
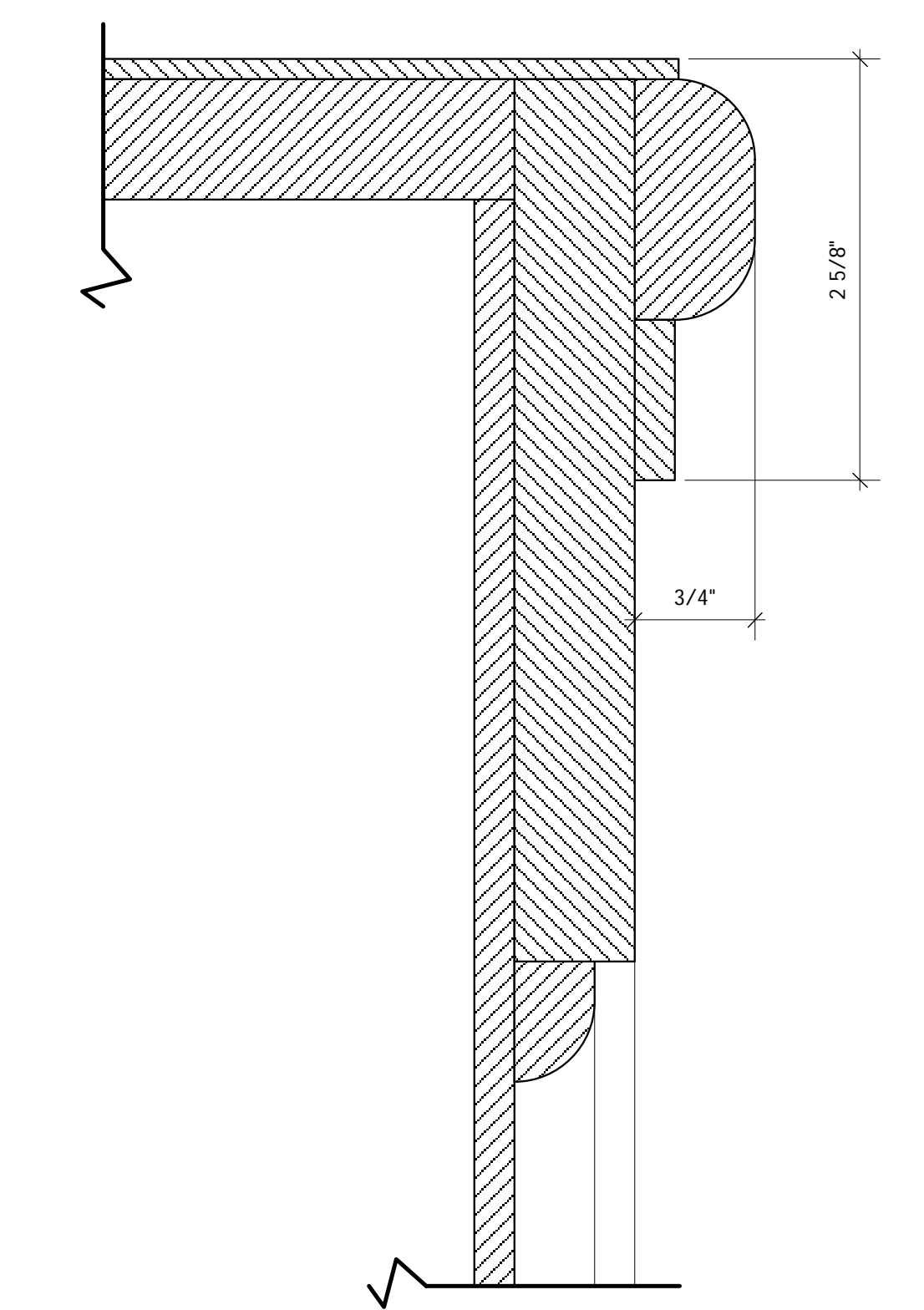
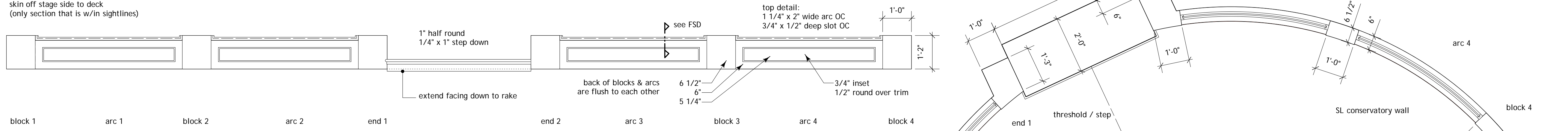
- drawing list**
- 1 ground plan
  - 2 SR centerline section
  - 3 deck, conservatory walls & sittings
  - 4 walls & facings | elevations
  - 5 ceiling
  - 6 upstage units | elevations

+40'-0" / match line  
8'-0" ds of pl

- Plaster Line
- 1: Main Curtain: not used
- 2: Trusser: not used
- 3: 1st electric
- 4: 2nd leg SR
- 5: 2nd electric
- 6: pick points for ceiling
- 7: open
- 8: open
- 9: border
- 10: legs
- 11: electric
- 12: pick points for ceiling
- 13: border
- 14: legs
- 15: open
- 16: open
- 17: open
- 18: projector ring?
- 19: open
- 20: projector ring?
- 21: projector
- 22: border
- 23: legs
- 24: truss
- 25: truss
- 26: truss/lighting?
- 27: open
- 28: open
- 29: hard cyc
- 30: black RP
- 31: open
- 32: open
- 33: open
- 34: open
- 35: open
- 36: open
- 37: Electric?
- 38: open
- 39: open
- 40: open
- 41: open
- 42: rig for projectors
- 43: rig for projectors

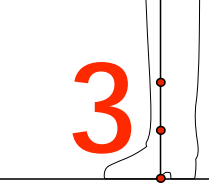


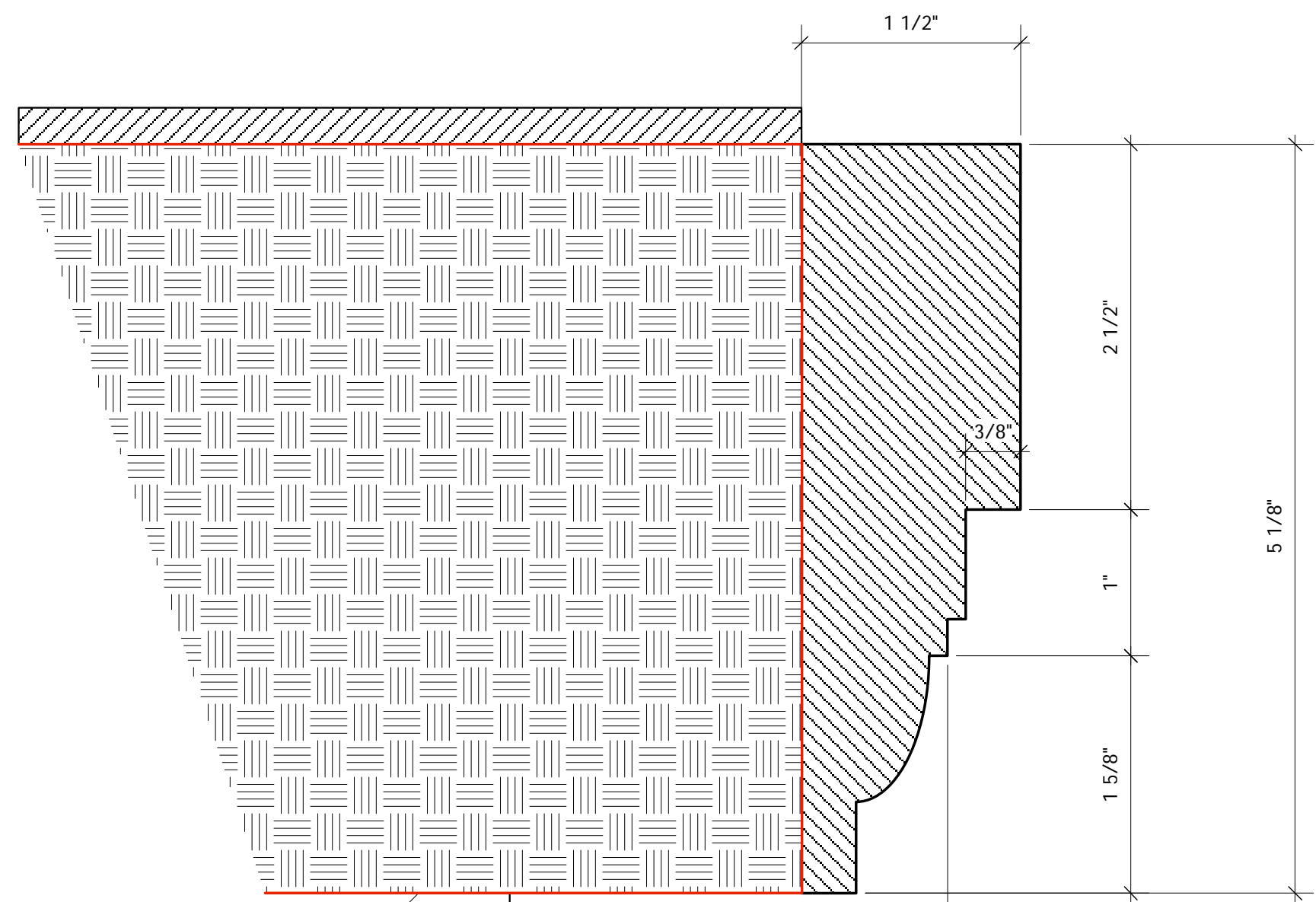
block 1: the SR 1'-0" section removable for firecurtain skin off stage side of deck (only section that is w/in sightlines)



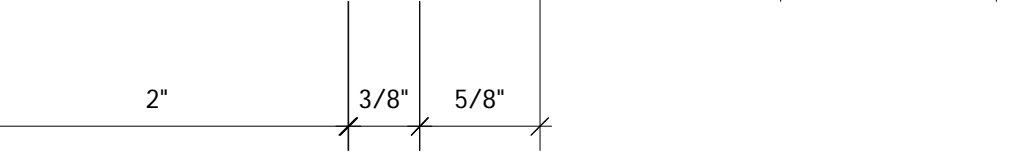
center stones/pattern:  
 2'-8\"/>

edge stones:  
 11 1/2\"/>

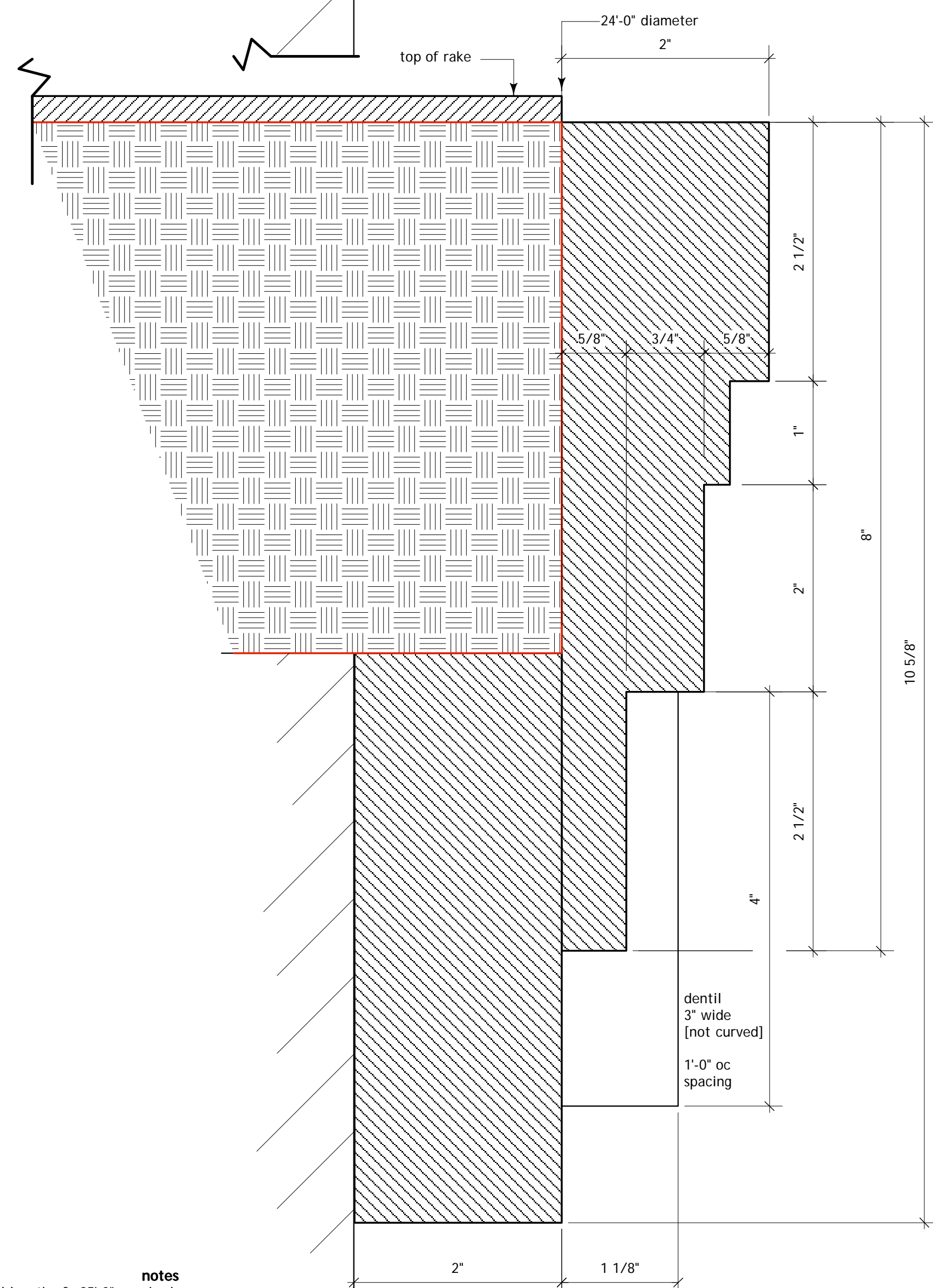




**notes**  
total length of ~22'-0" required  
moulding is NOT curved  
mitre corners

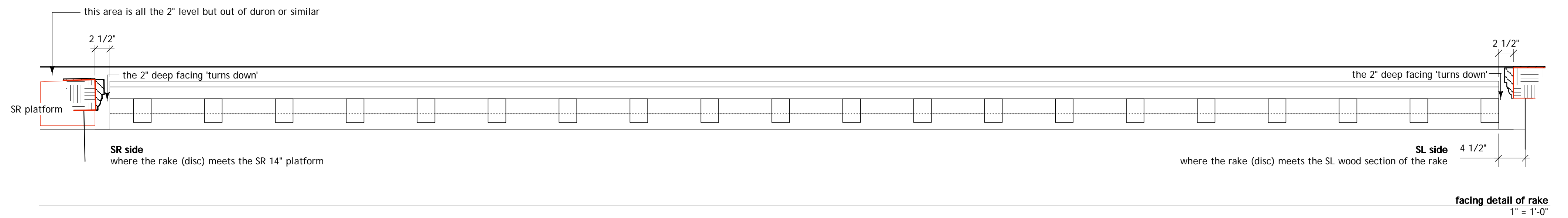


**facing of side platforms**  
Full scale

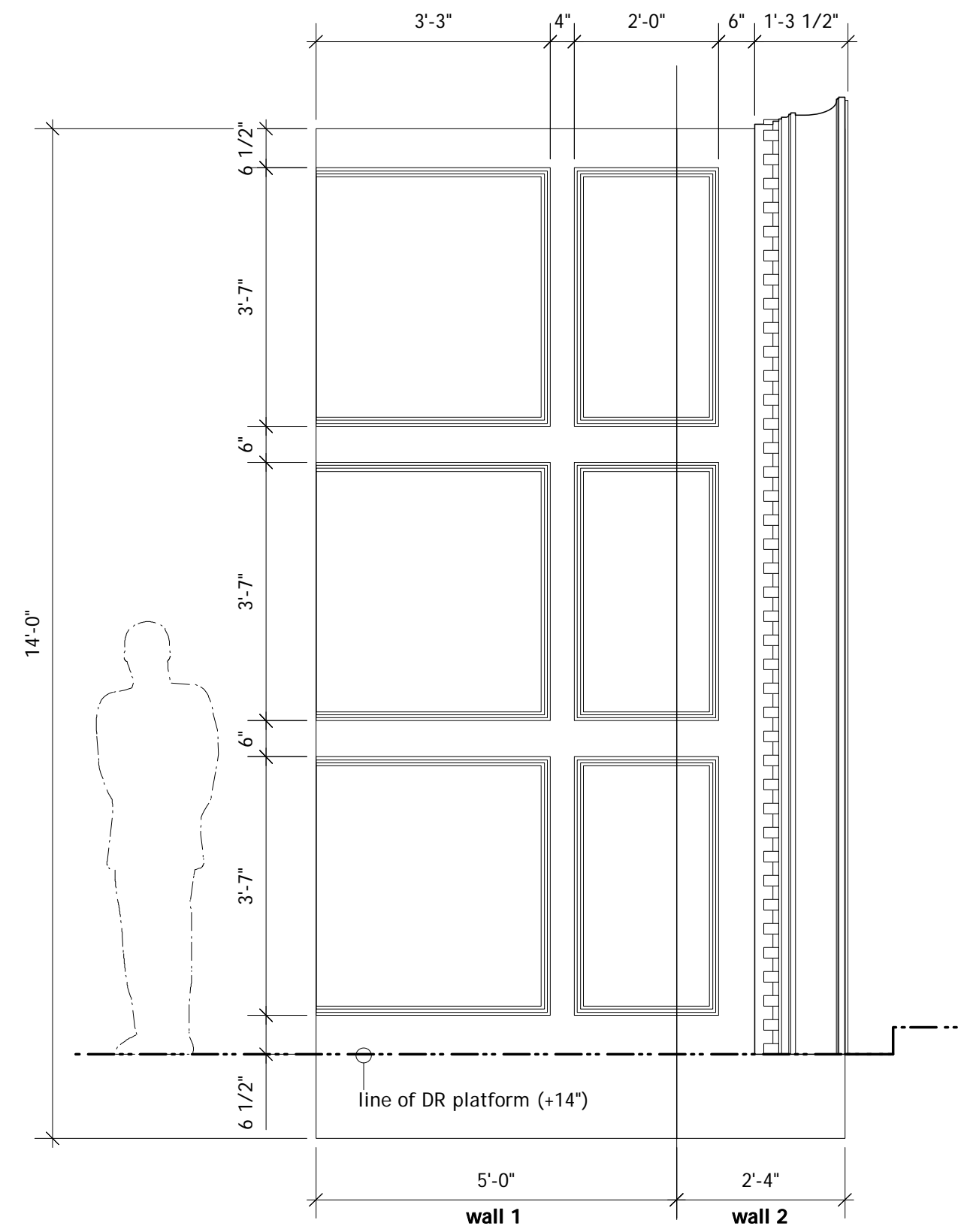


**notes**  
total length of ~25'-0" required,  
outside edge is at a 24'-0" diameter curve  
dentils are 3" wide x 4" tall x 1 1/8" deep  
[not curved] spaced 1'-0" oc, 20 total  
start layout on the SL side  
apply 1/8" strips of sheet stock to DS side of trim,  
if needed to obscure foam/texture

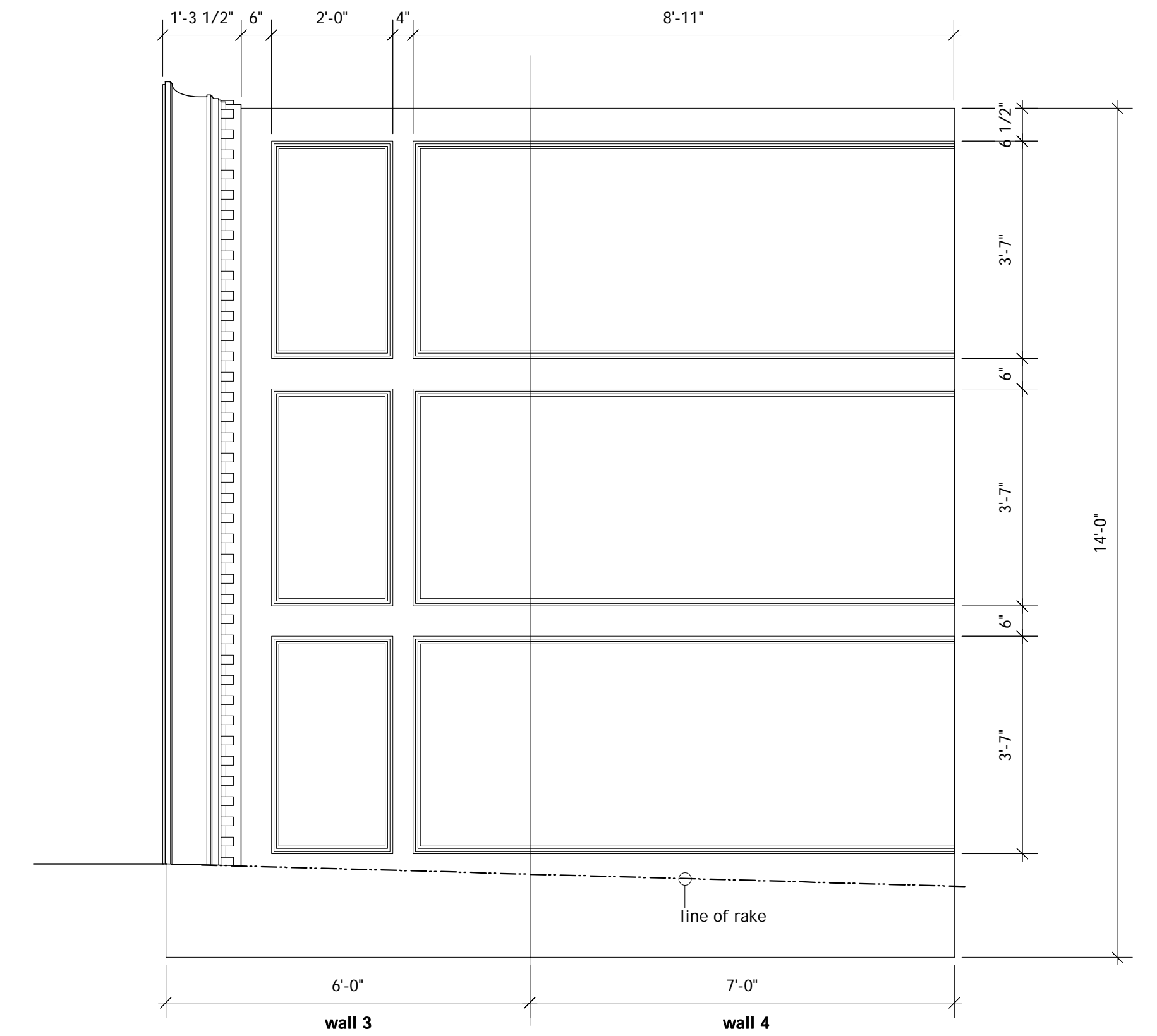
**facing of circle/rake**  
Full scale



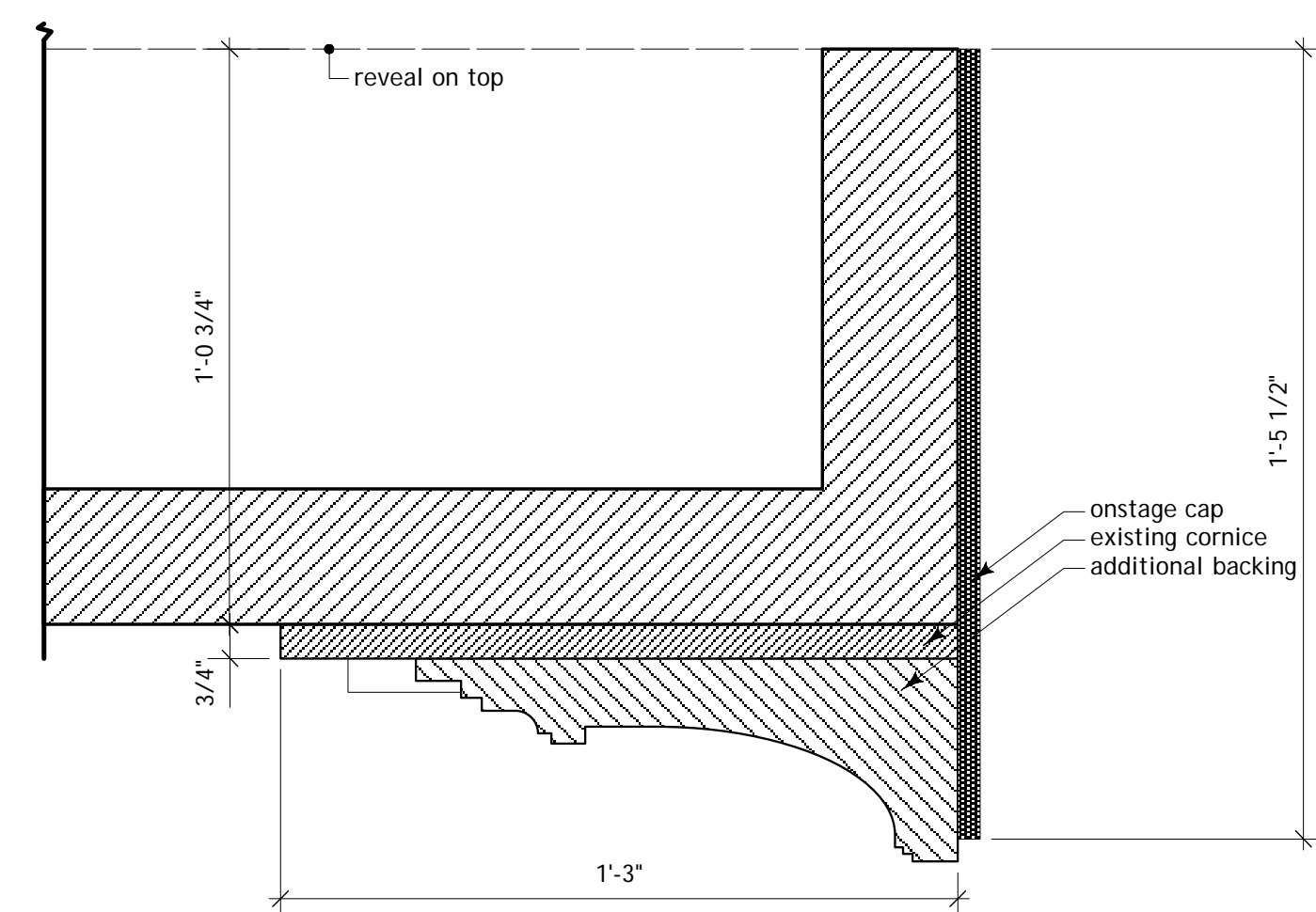
**facing detail of rake**  
1" = 1'-0"



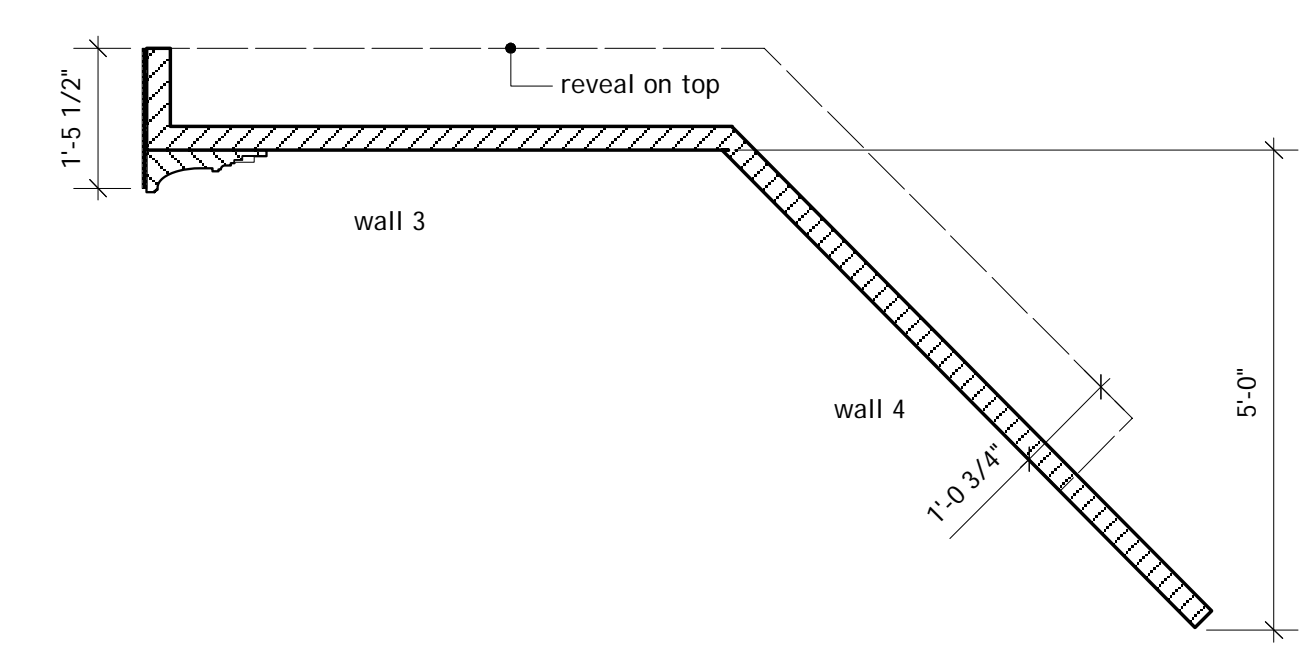
**flat front view of DSR wall (wall 1 & 2)**



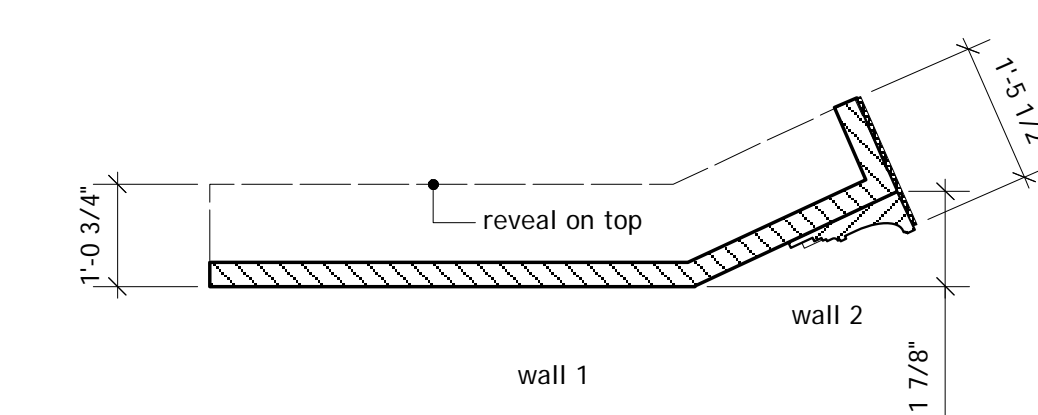
**flat front view of USL wall (wall 3 & 4)**



**cornice details**  
3" = 1'-0"



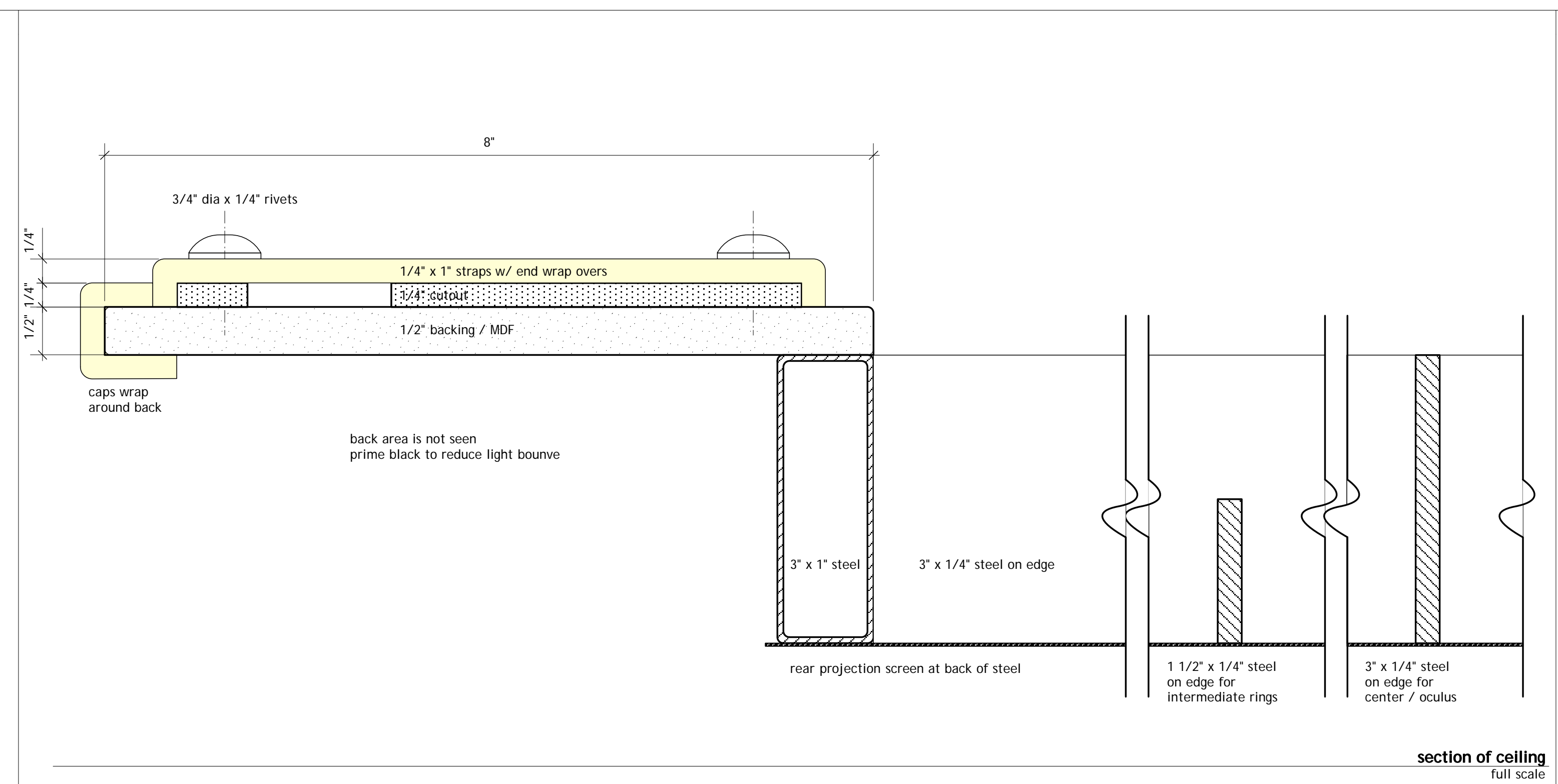
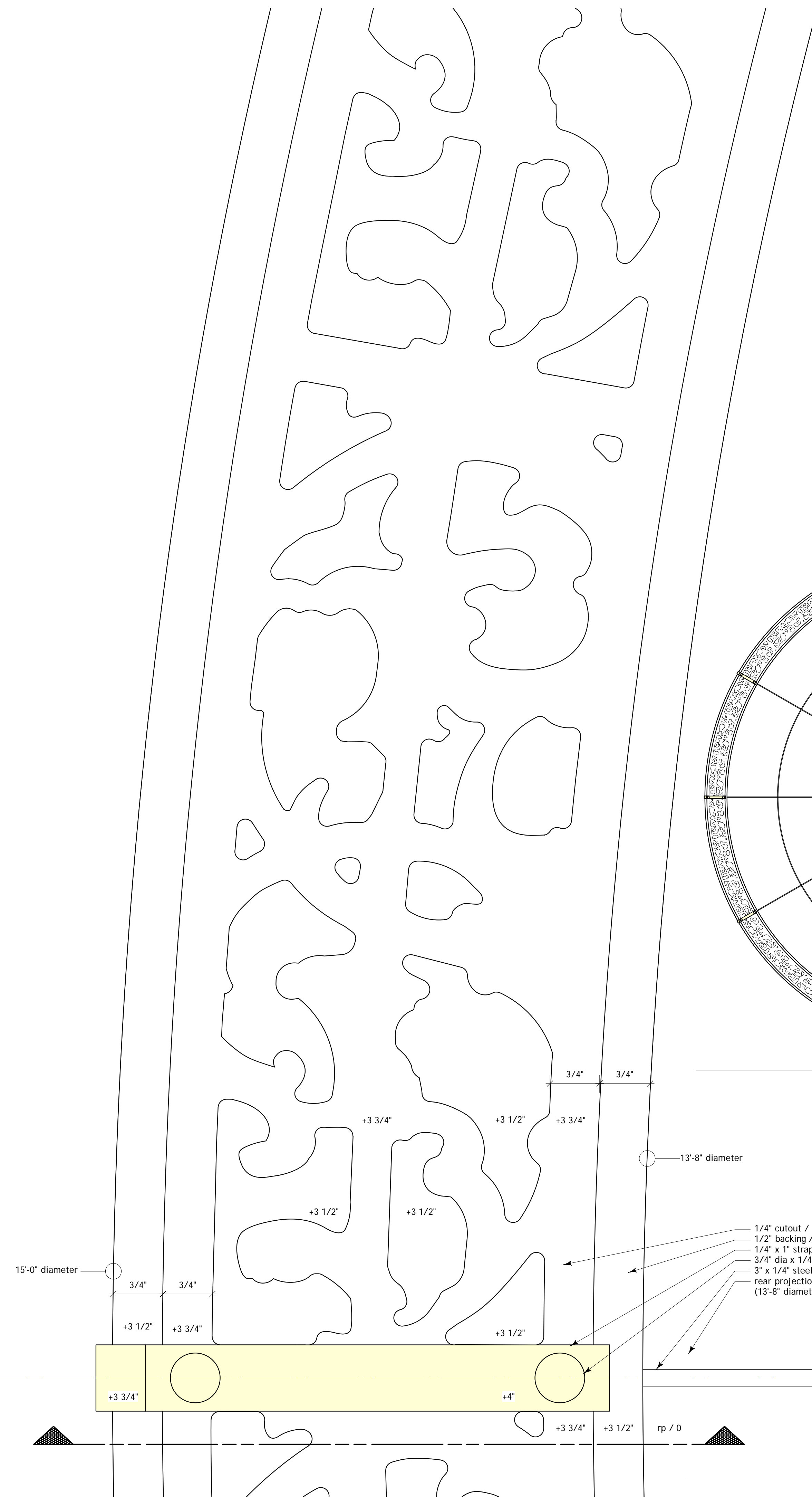
**plan view of USL wall (wall 3 & 4)**



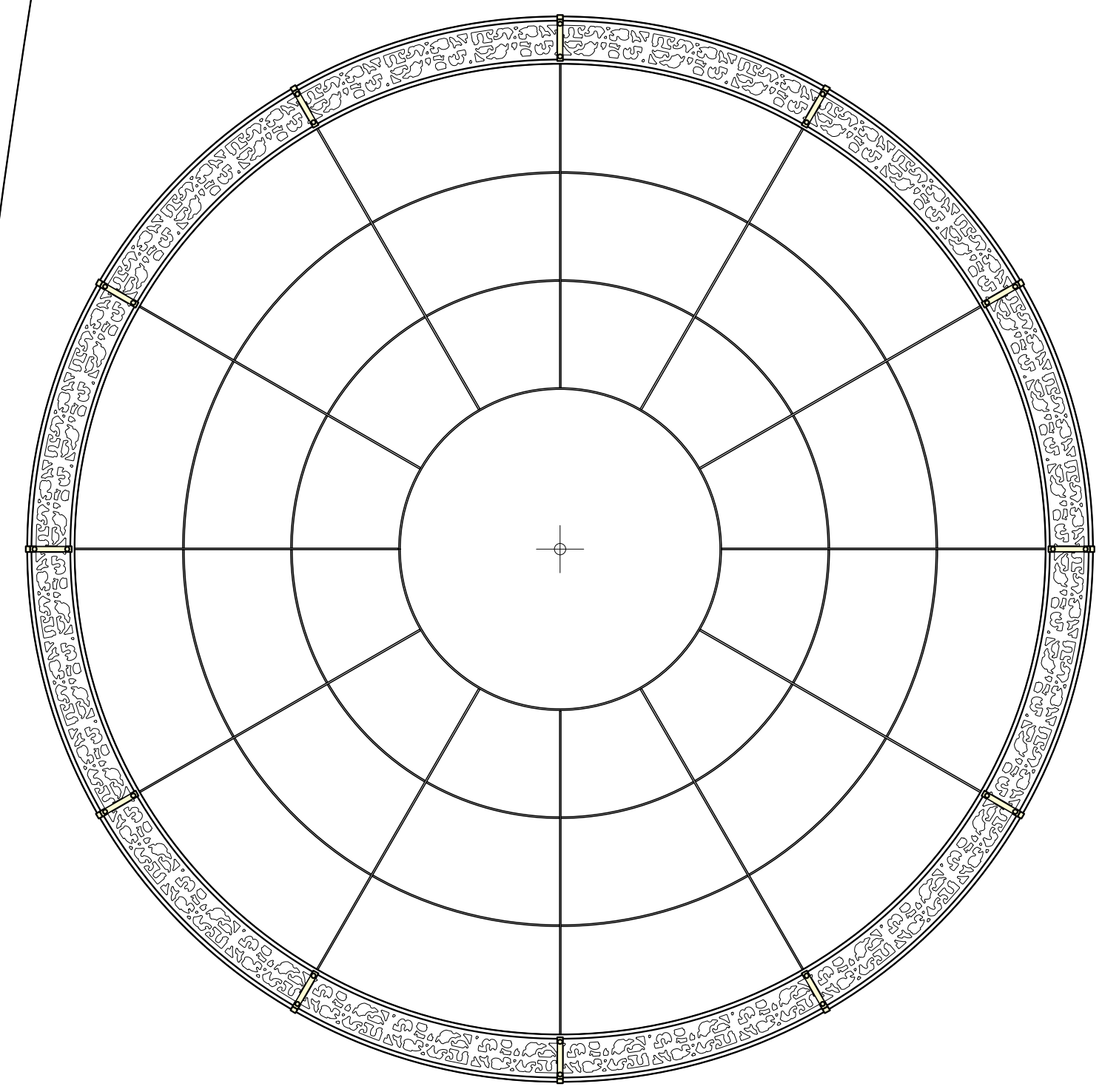
**plan view of DSR wall (wall 1 & 2)**

**notes on USL & DSR wall**  
14'-0" flats  
hard skin & muslin cover  
sits on theater floor  
1'-0 3/4" reveal on top  
cornice is from MAURITIUS w/ onstage cap,  
base level & dentil additions  
other trim is Lowe's #390 5/8" x 2 5/8"  
chair rail [\$14.35 per 12']; mitre corners

**dentils**  
2 1/2" wide x  
1 3/4" tall x  
3/4" deep  
[notch onstage side]  
2 1/4" spacing between

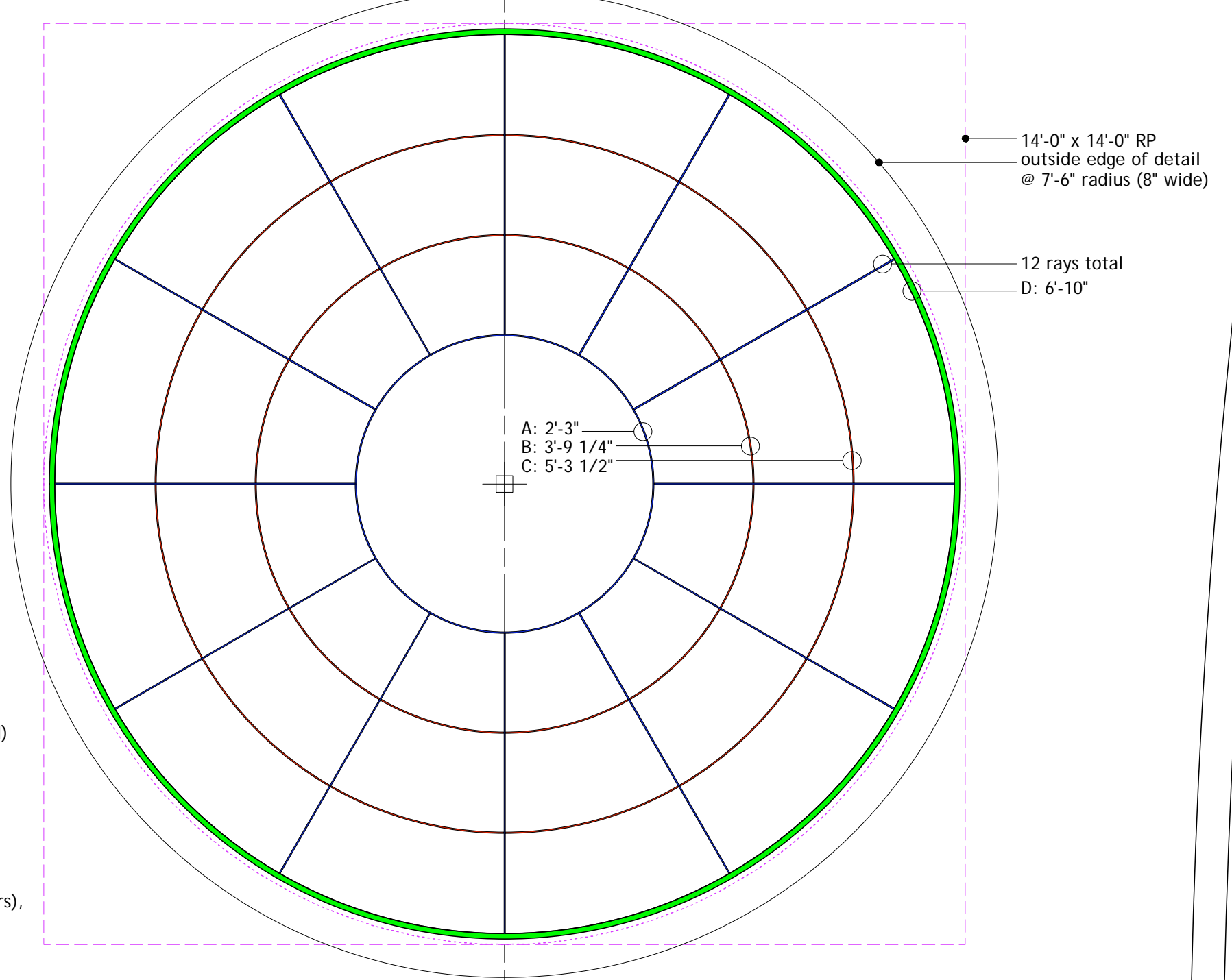


section of ceiling  
full scale



ceiling frame filigree detail  
1/2" = 1'-0"

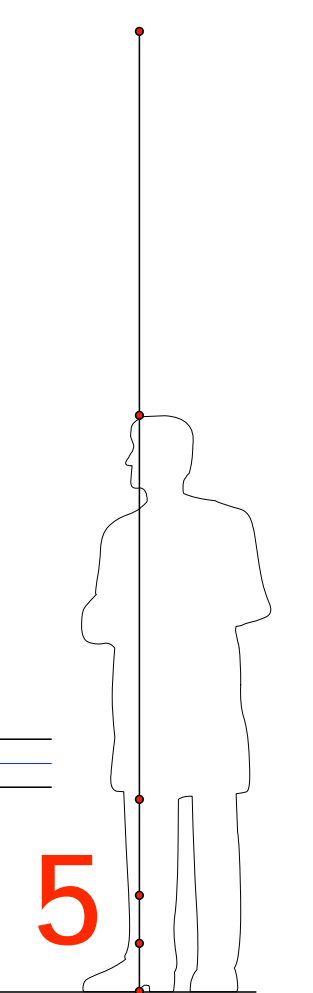
**notes**  
all radii given are inside diameters  
A is a full circle, 3" x 1/4" steel (blue)  
B & C are segments, 1 1/2" x 1/4" steel (red)  
D is a full circle, 3" x 1" steel (green)  
12 rays are 3" x 1/4" steel (blue)  
RP sits flush on back of unit  
B & C are flush to RP  
outside edge detail will be  
1" thick maximum (1/2" base + 2 1/4" layers),  
sitting on top of D

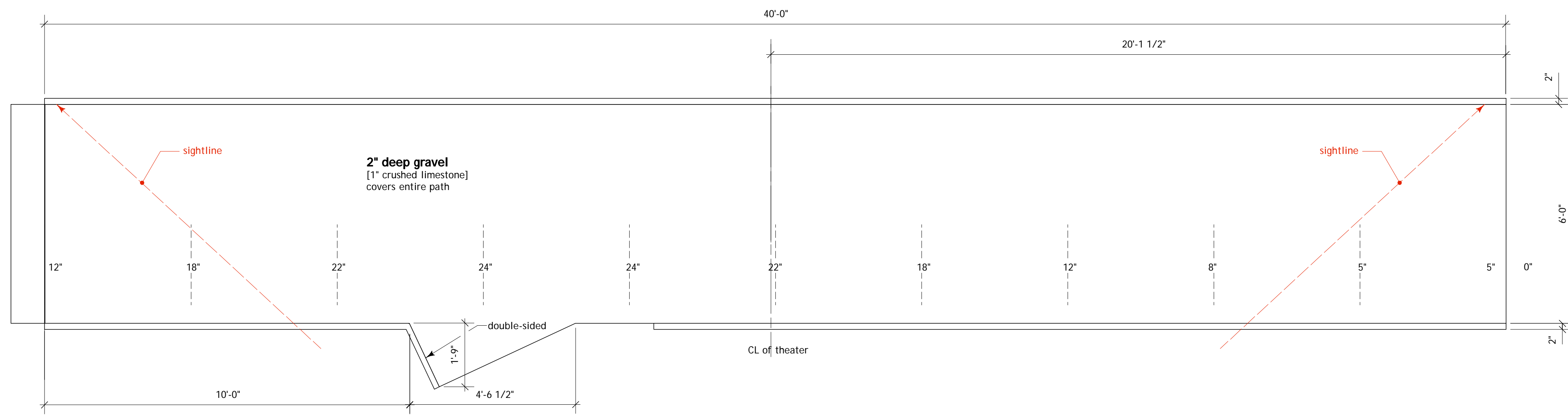


ceiling steel  
1/2" = 1'-0"

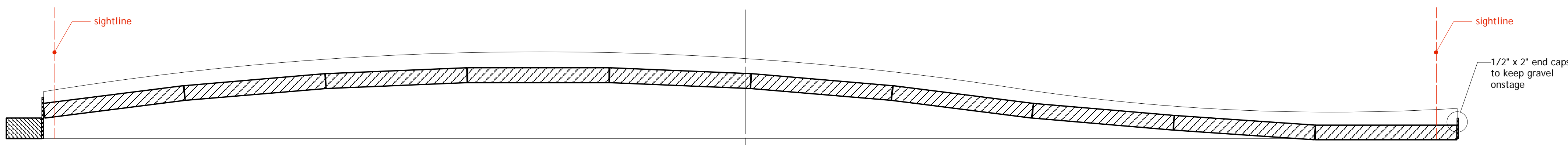
ceiling details  
full scale

**notes**  
black RP projection surface  
coordinate projector location & effects  
unit has the finish of cast iron [softness/texture]; color is muted gold/yellow

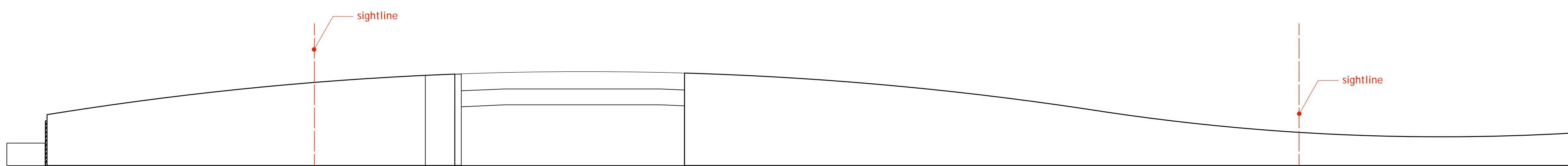




top view

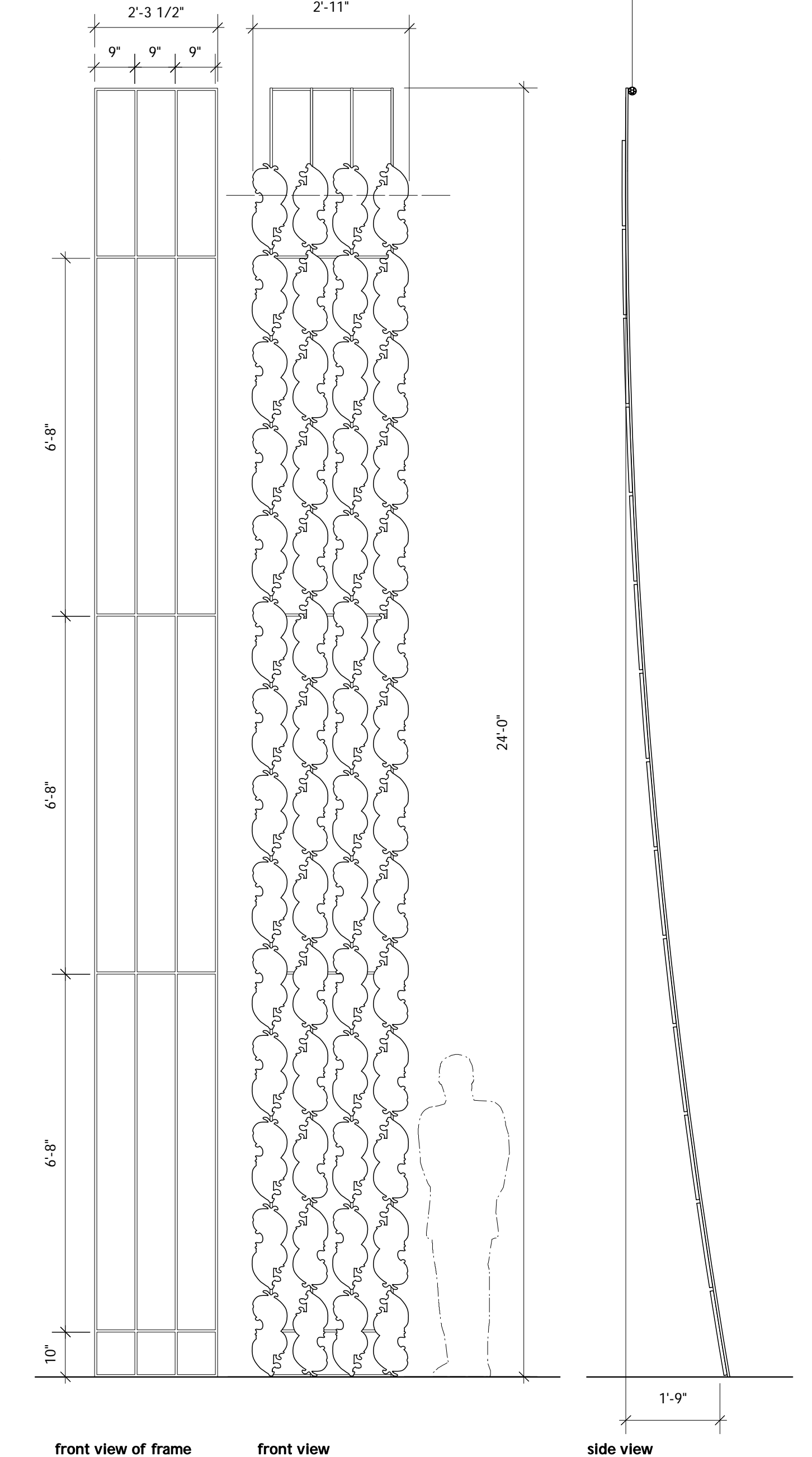


section & back curb [wall]



front curb [wall]

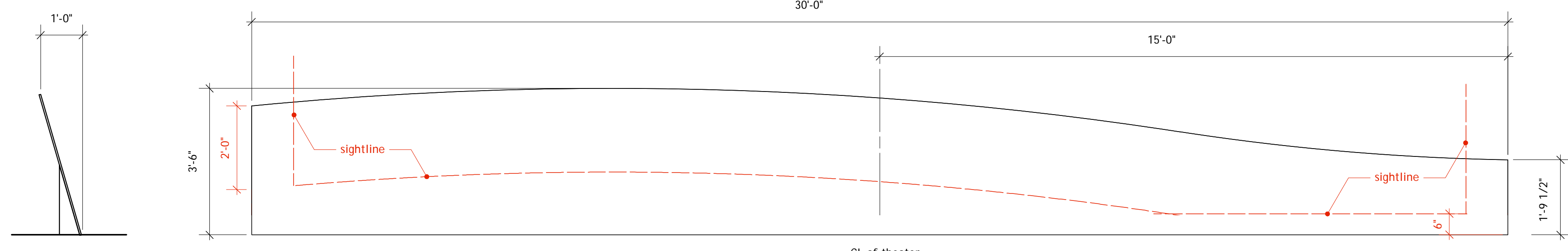
**gravel path**  
 4" x 6" stock platforms w/ 2" wide x 4" tall curbs on US & DS edges  
 2" x 1/2" lip ends  
 drawing does NOT include 2" deep gravel on top of platform  
 1" crushed limestone [\$10.35 per ton + \$75 delivery, 3 tons needed]  
 curbs have heavy texture/skim coat on front & reveal  
 texture will have 1/2" grout to simulate carved stone caps



front view of frame

front view

side view



side view

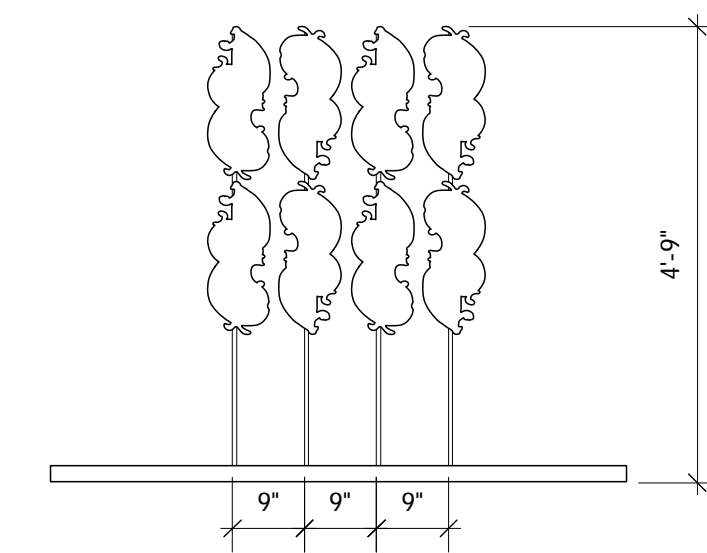
flat front view

CL of theater

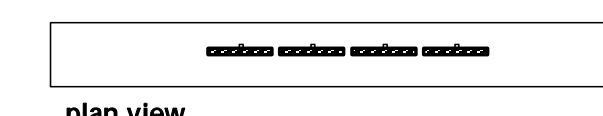
top view

**ground row**  
 3'-6" x 30'-0" x 1/2" reveal on top  
 heavy texture/skim coat on front & reveal

**hard cyc**  
 6'-0" x 24'-0" x 1/2" reveal on sides  
 canvas skin



front view



plan view

**filagree shadows**  
 8 existing units  
 1/2" square tube behind  
 unit is attached to base, as needed  
 silhouette is seen only

**filagree**  
 56 existing units  
 1/2" x 24" square tube behind  
 unit is attached to batten above [out of sightlines]  
 unit curves/leans forward 1'-9"  
 finish is high gloss, [bright] chrome oxide green w/ blue glazes/shadows