

- 21 .
- 20 RP CYC: NOT HUNG O.C.
- 19 DEAD
- 18 4TH ELECTRIC
- 17 4TH ELECTRIC
- 16 DEAD
- 15 FULL STAGE BLACK OUT BOTTOM @ 11'-9"
- 14 .
- 13 .
- 12 3RD ELECTRIC
- 11 3RD ELECTRIC
- 10 3RD ELECTRIC
- 9 THE NOOSE
- 8 LEG
- BORDER: TRIM IS 20'-0" BREAST U.S. 10" TO LEG
- 7
- 6 THE RING
- 5 2ND ELECTRIC
- 4 2ND ELECTRIC
- 3 2ND ELECTRIC
- 2 NAKED LIGHTS #2
- 1 NAKED LIGHTS #1
- 1ST ELECTRIC
- HOUSE TORMS 28'-8" OPENING BOTH 14'-4" TO CL
- HOUSE TEASER: 20'-0"

**NOTES ON APRON:**

- D.S. MASKING FLATS [12'-0" AND 16'-0" FLATS] ON S.L. AND S.R. SKIN WITH BLACK DUVETYN
- DECK APRON ESCAPE PLATFORMS WITH BLACK CARPET, WRAP AROUND FACINGS
- FIRE POCKET PLATFORMS ARE CLEAN/FLAT DECK AND FACING, SKIN WITH MASONITE, LOW LUSTER BLACK FINISH
- HADES ENTRANCE STAIR DRAWING TO FOLLOW, AFTER ON SITE SURVEY

**NOSING [GRAVEL CORRAL]**  
 3/4" X 1'-2"  
 HEAVY TEXTURE ON FACING  
 TOP IS AT +2"

**PEA GRAVEL**  
 -2" THICK  
 COVERING D.S. AREA/LIFTS

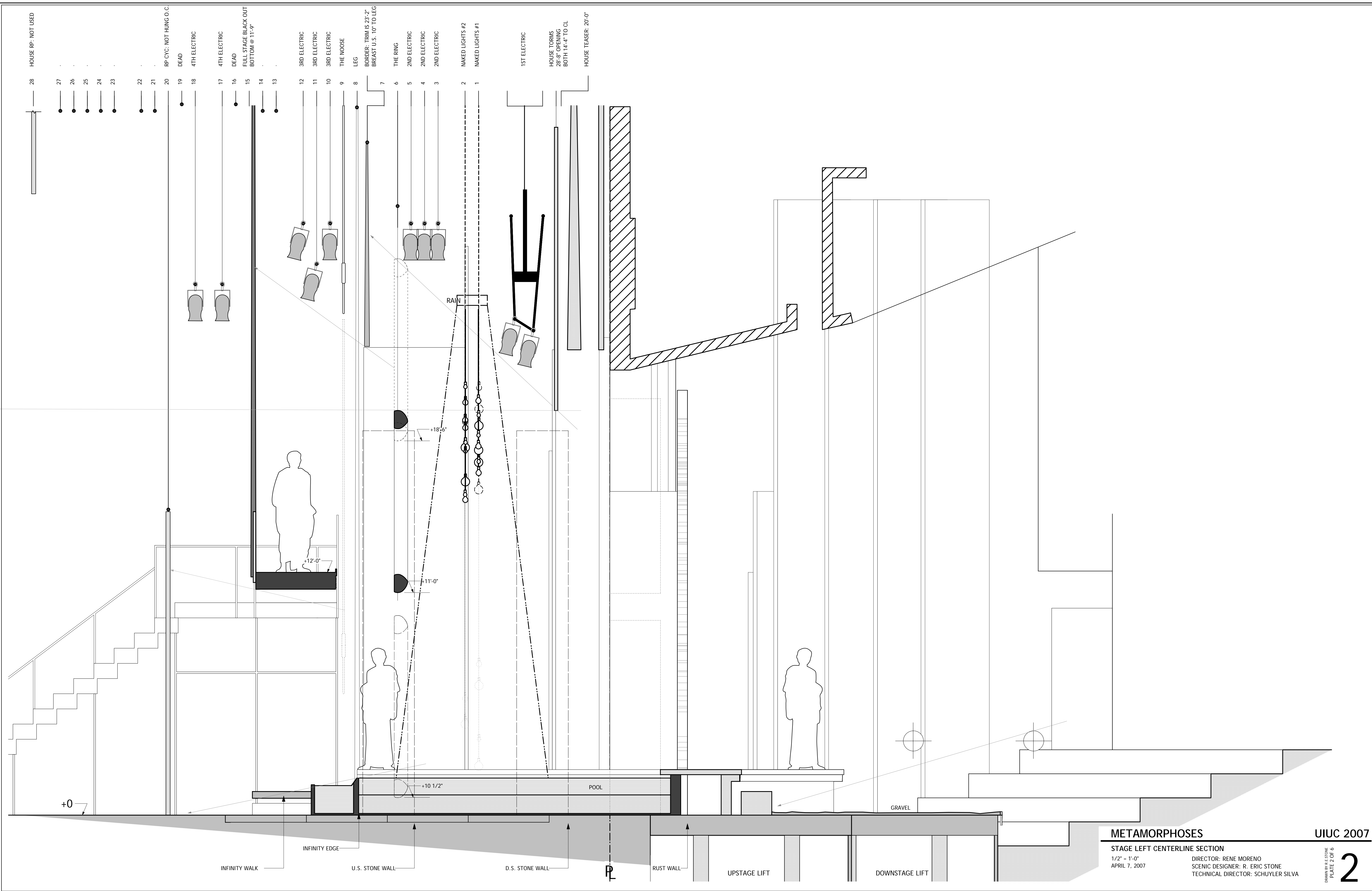
- DRAWING LIST:**
- 1 COMPOSITE GROUND PLAN
  - 2 CENTERLINE SECTION
  - 3 DECK LAYOUT
  - 4 THE GOD BRIDGE
  - 5 THE WALLS
  - 6 THE RING, THE BULBS, THE NOOSE

**METAMORPHOSES**

**GROUND PLAN**  
 1/2" = 1'-0"  
 APRIL 7, 2007

DIRECTOR: RENE MORENO  
 SCENIC DESIGNER: R. ERIC STONE  
 TECHNICAL DIRECTOR: SCHUYLER SILVA

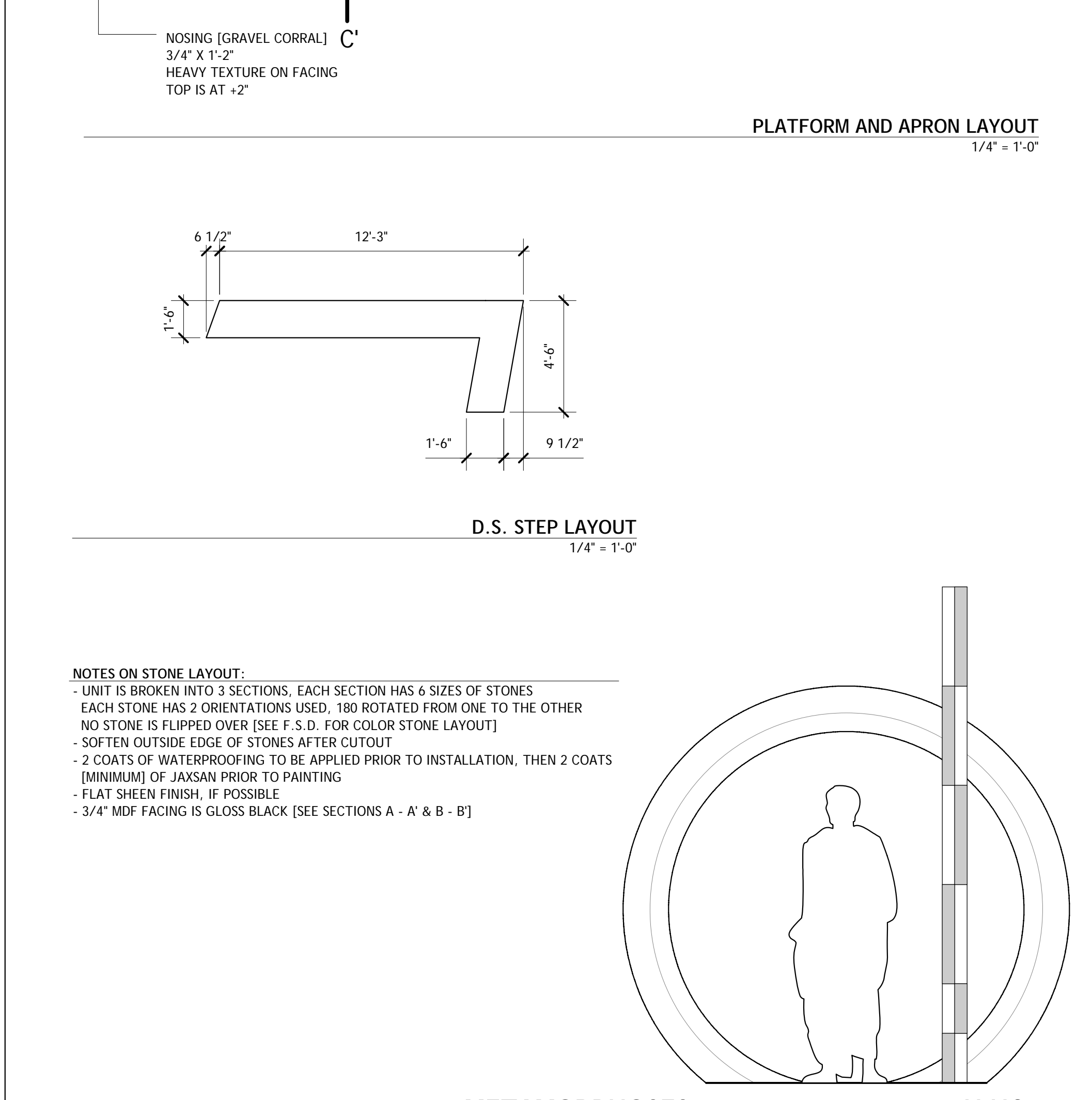
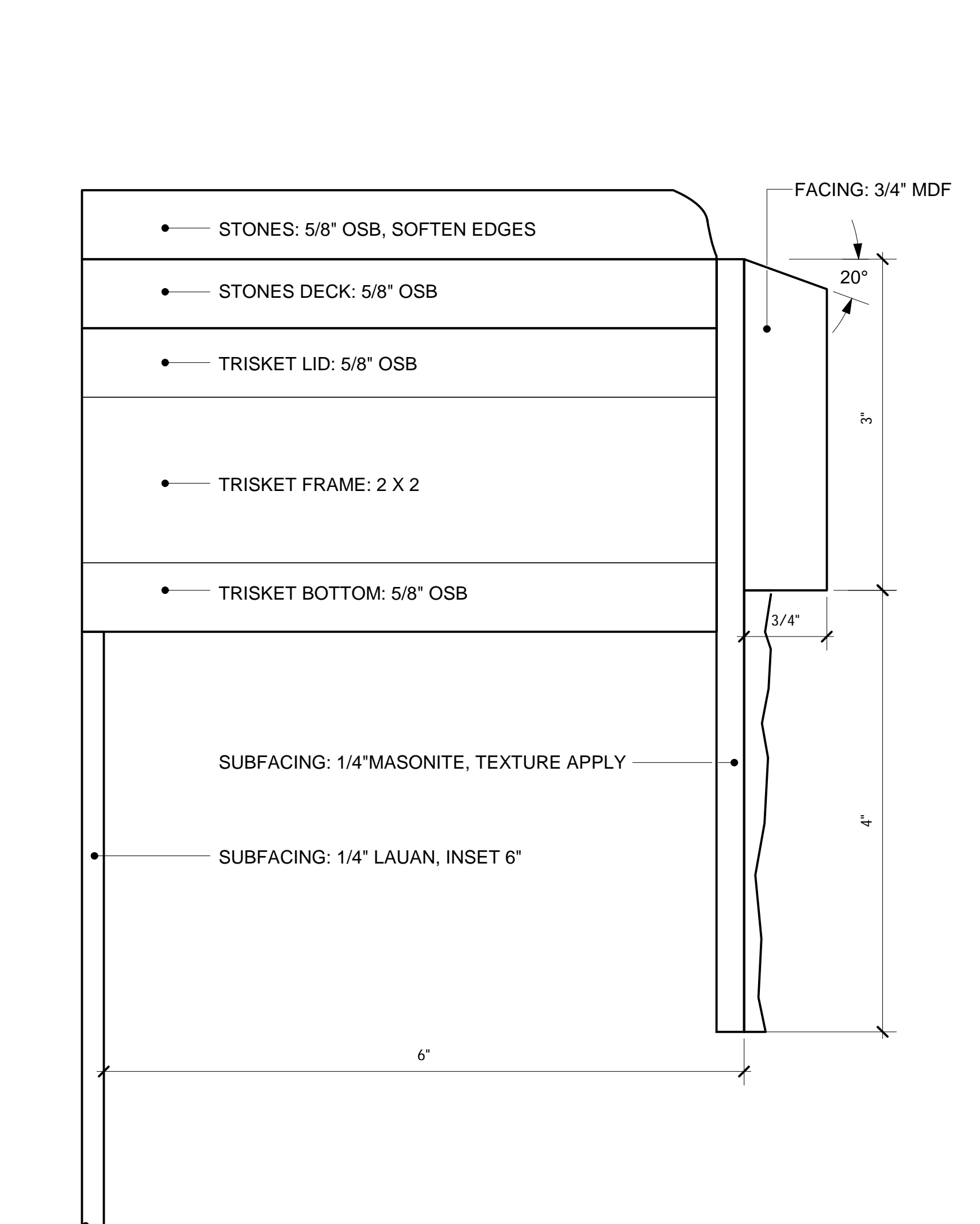
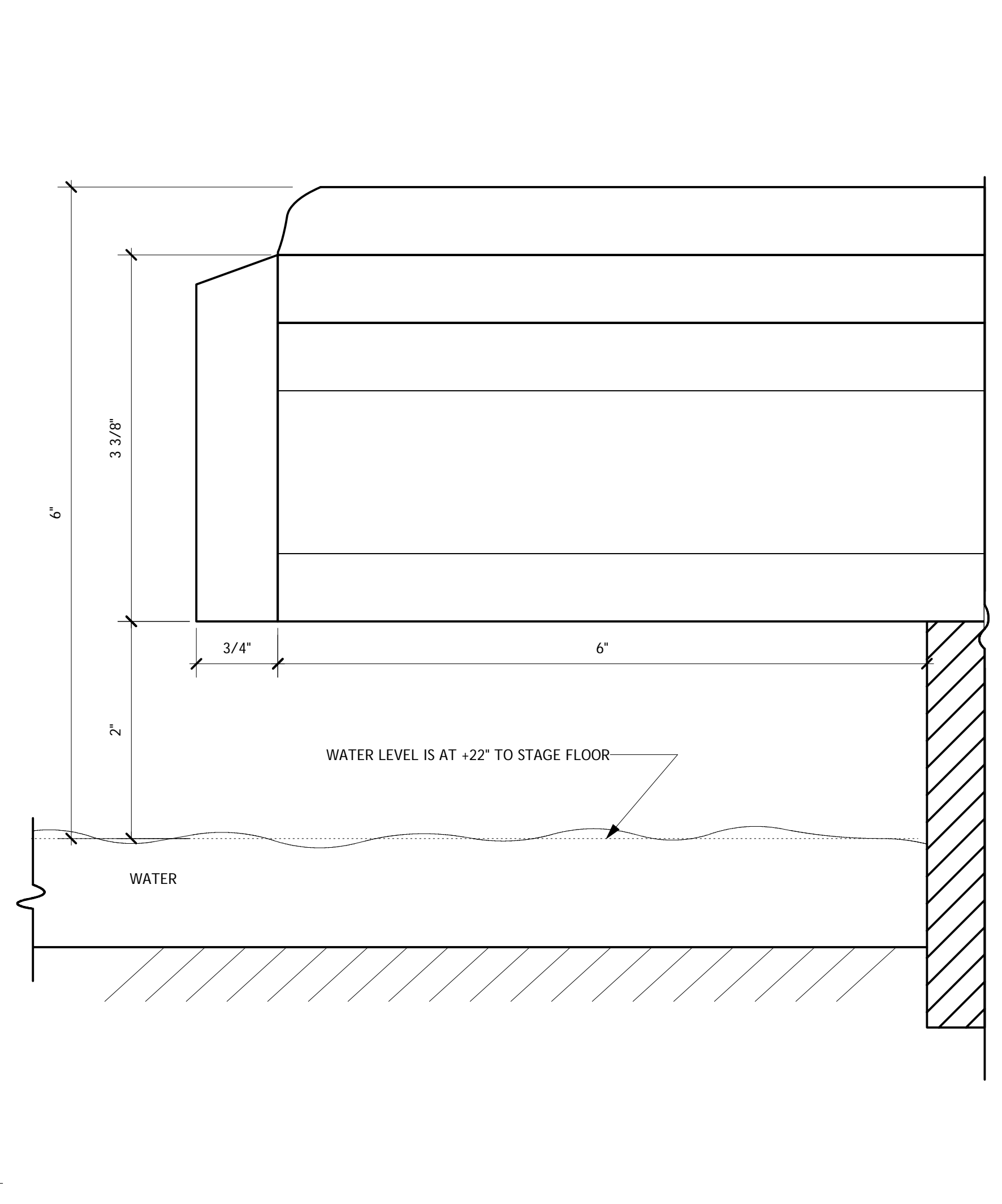
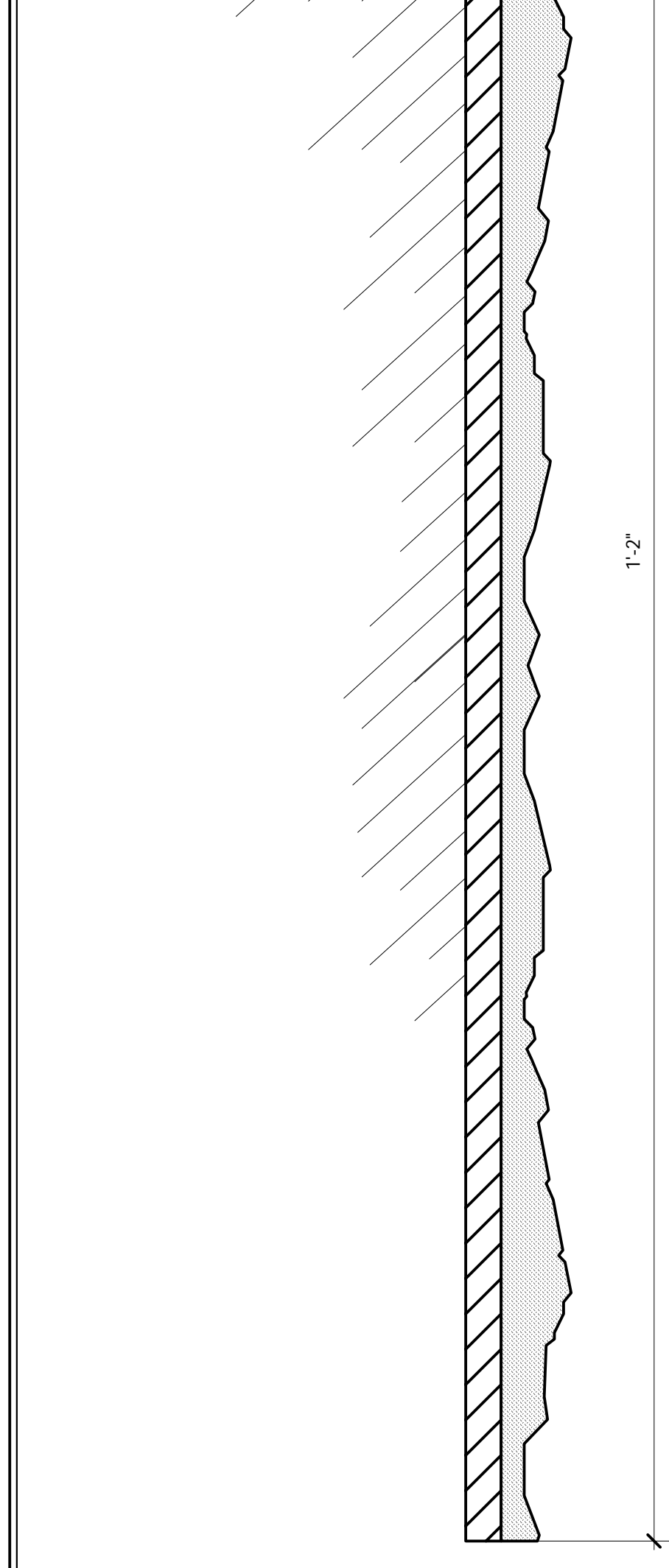
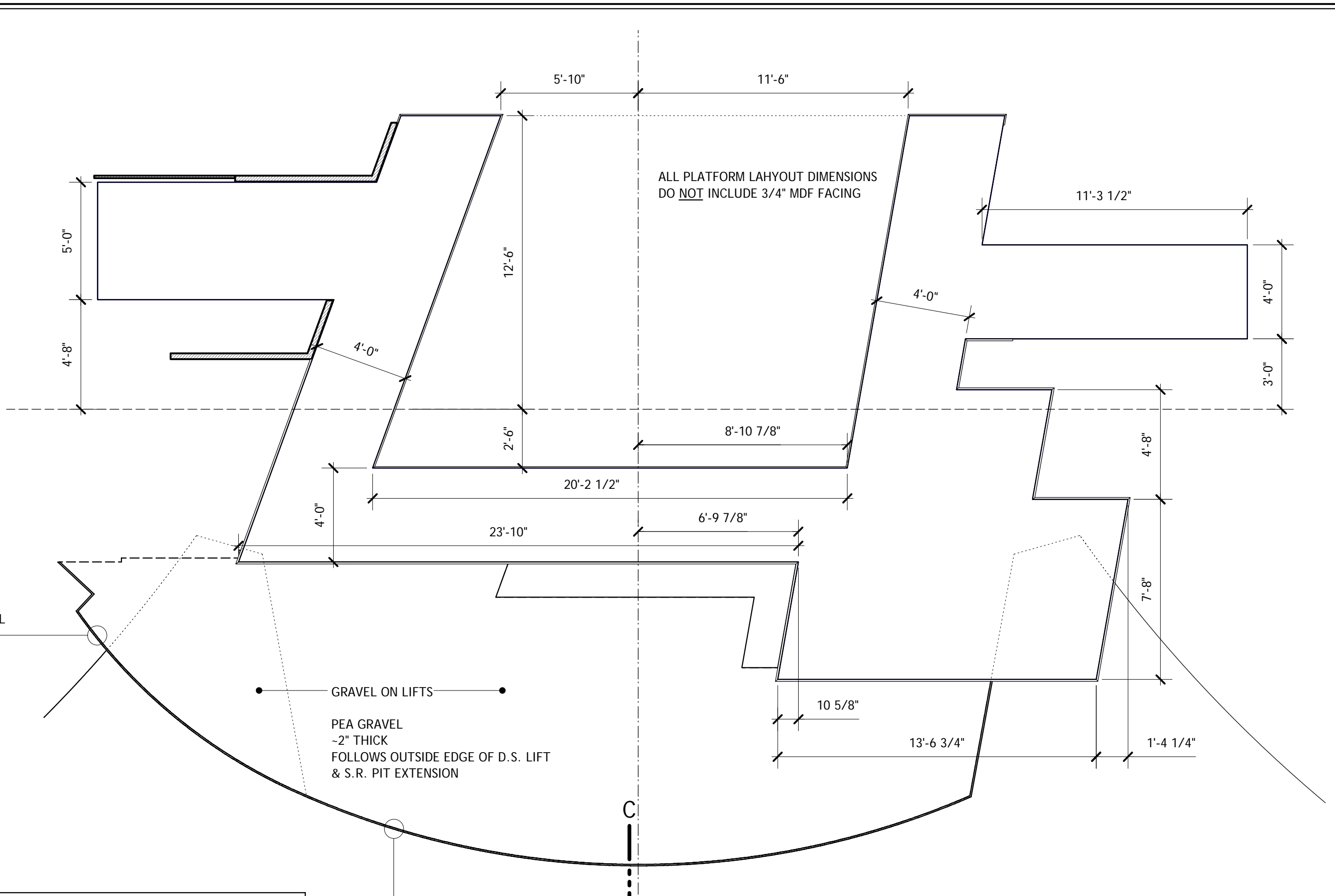
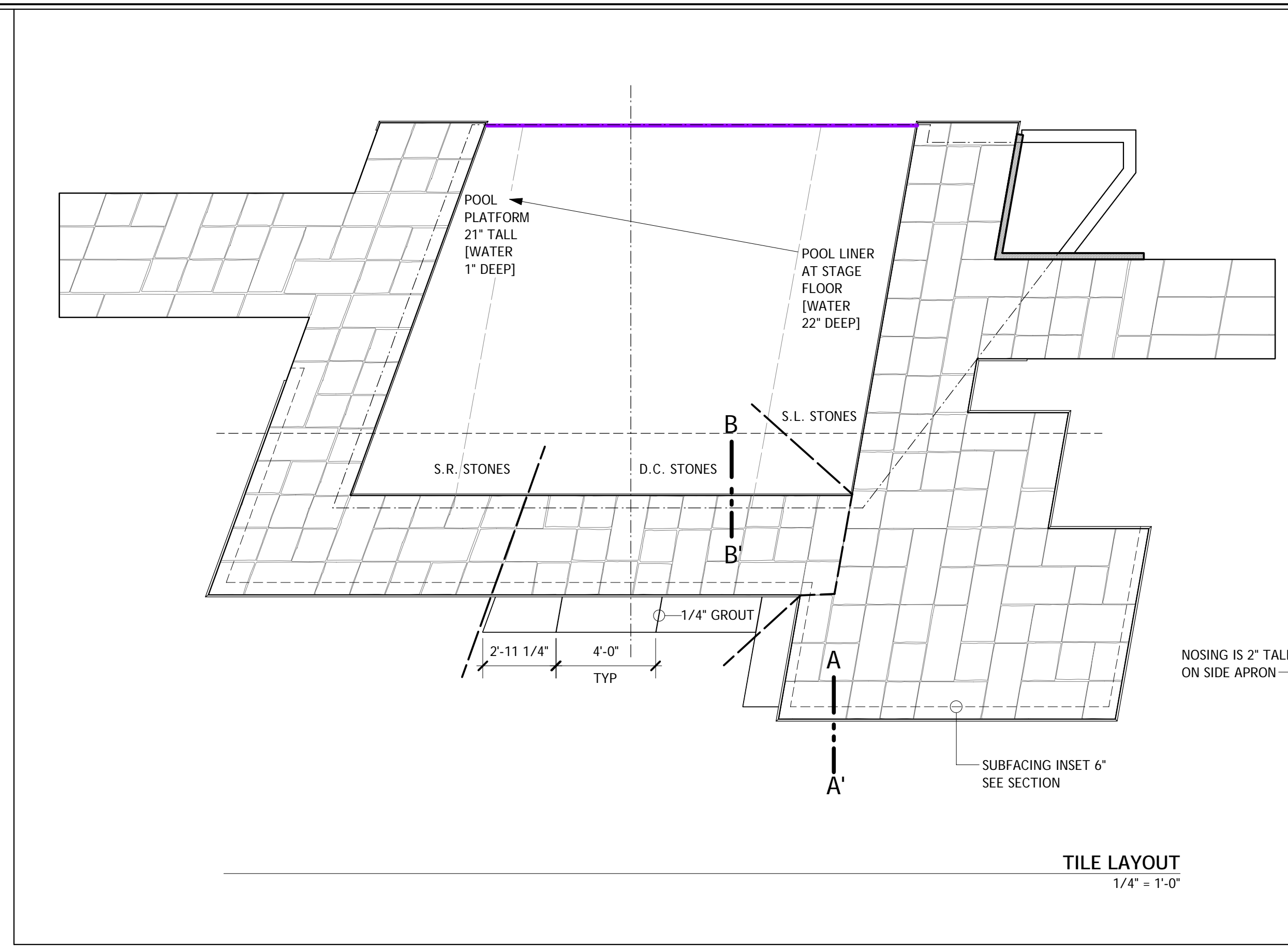
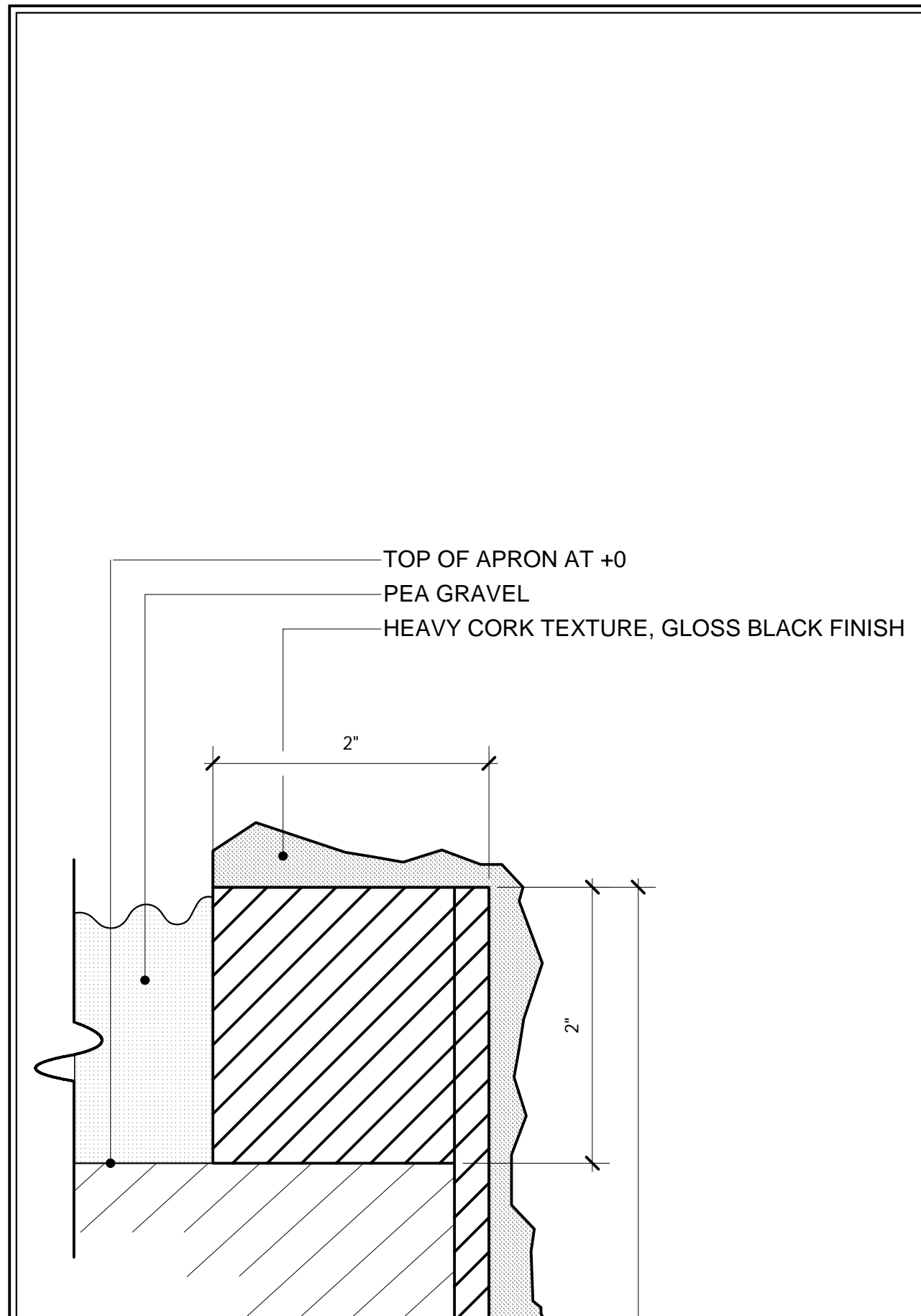
UIUC 2007



**METAMORPHOSES** UIUC 2007

STAGE LEFT CENTERLINE SECTION  
 1/2" = 1'-0"  
 APRIL 7, 2007

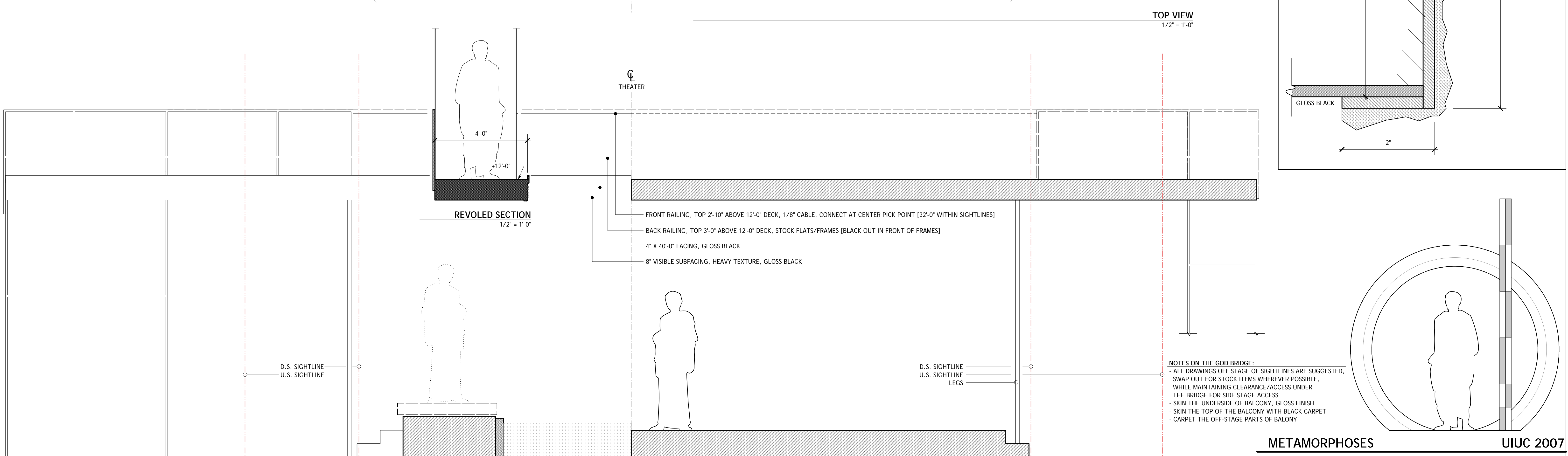
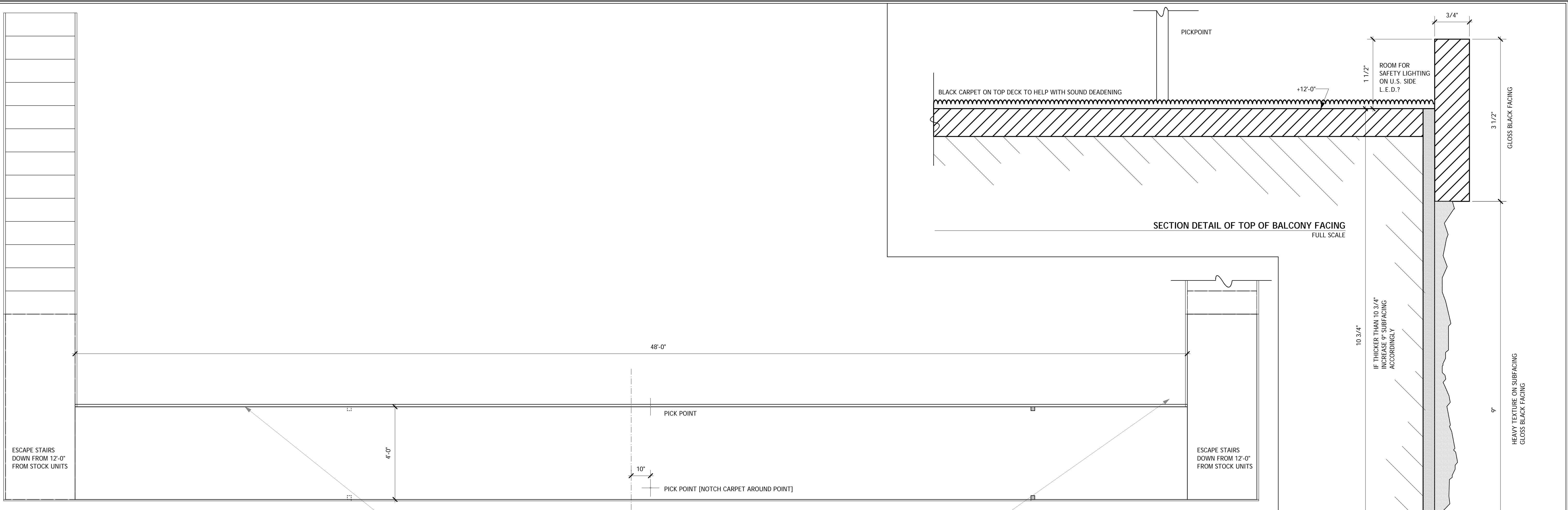
DIRECTOR: RENE MORENO  
 SCENIC DESIGNER: R. ERIC STONE  
 TECHNICAL DIRECTOR: SCHUYLER SILVA

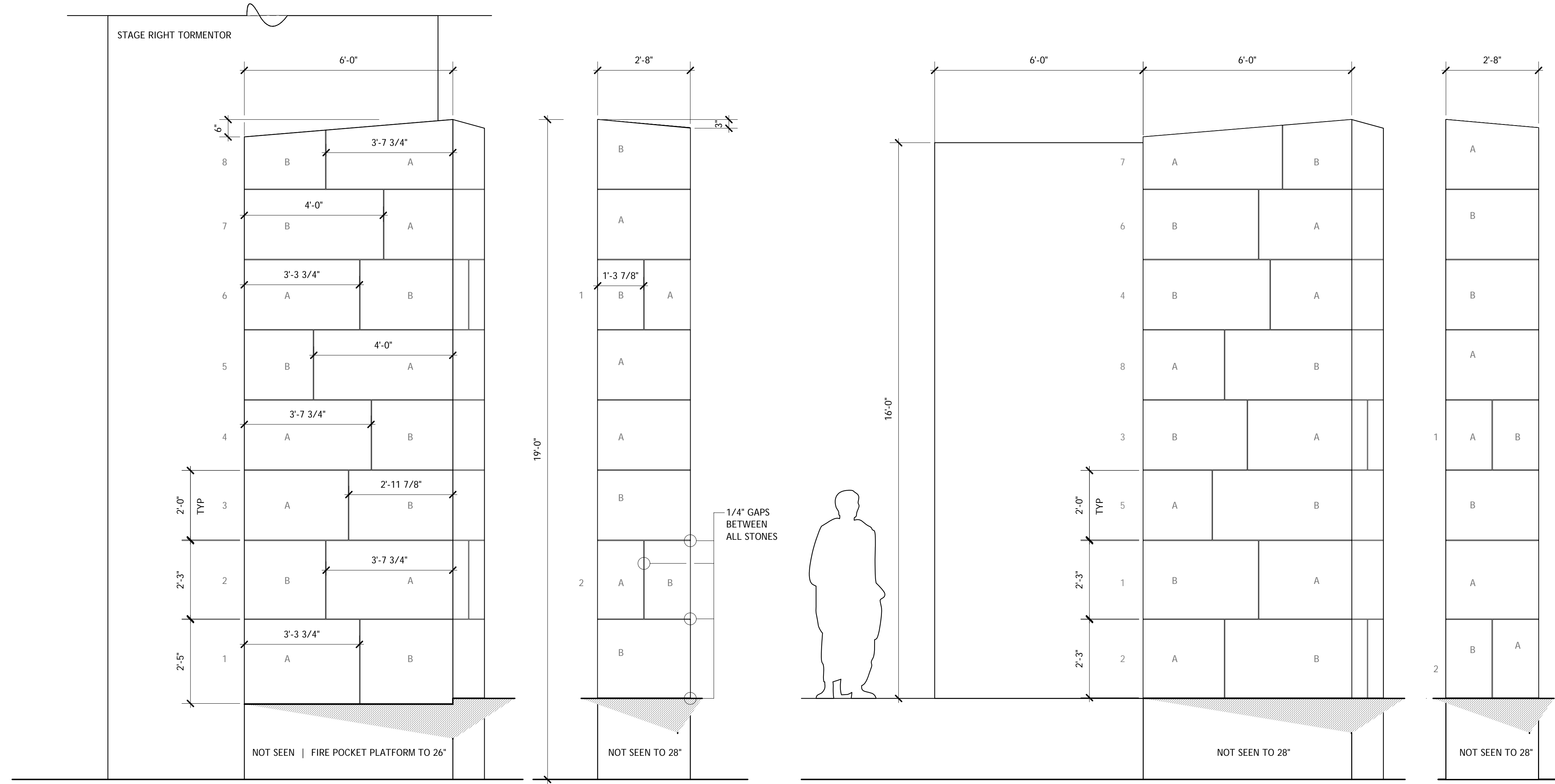


SECTION C - C' | DETAIL OF APRON FACING [GRAVEL CORRAL]  
FULL SCALE

SECTION B - B' | DETAIL OF DECK FACING ON INSIDE [POOL SIDE]  
FULL SCALE

SECTION A - A' | DETAIL OF DECK FACING ON OUTSIDE  
FULL SCALE



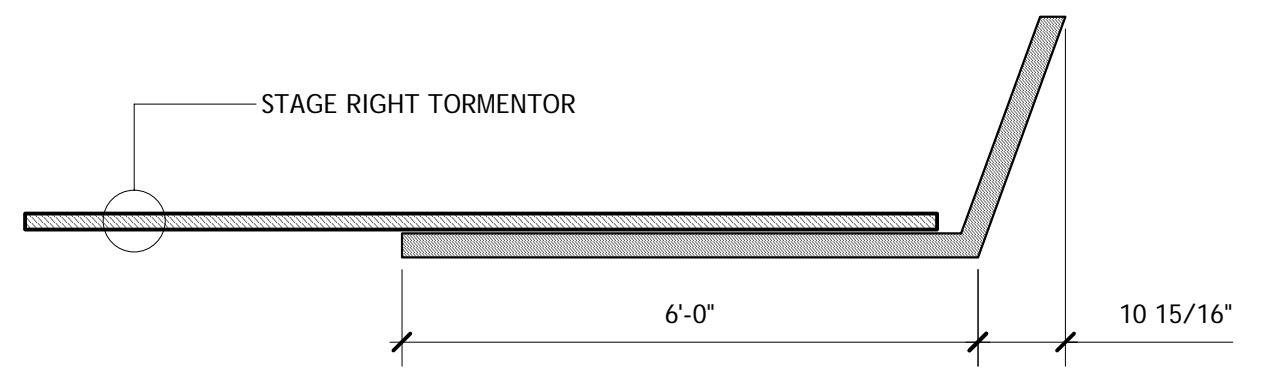


FRONT VIEW | D.S. STONE WALL  
1/2" = 1'-0"

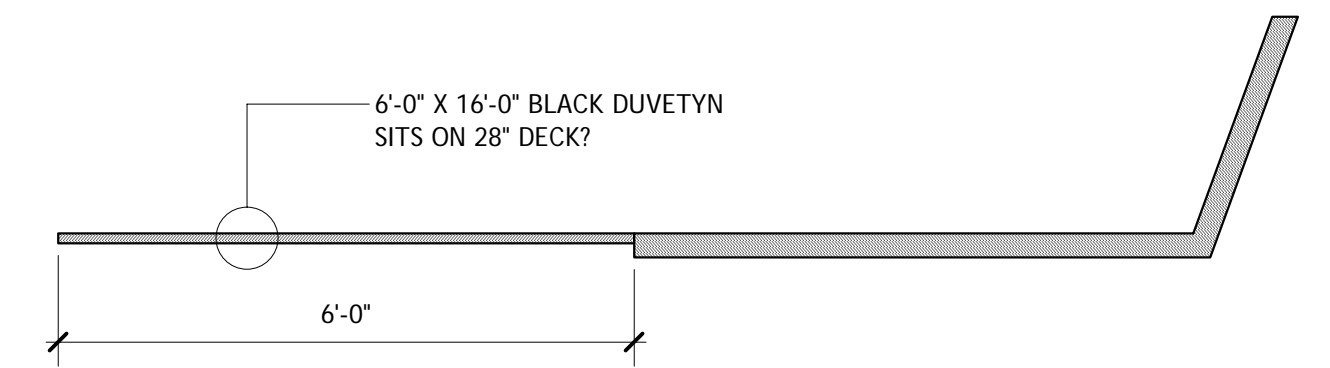
SIDE VIEW | D.S. STONE WALL  
1/2" = 1'-0"

FRONT VIEW | U.S. STONE WALL  
1/2" = 1'-0"

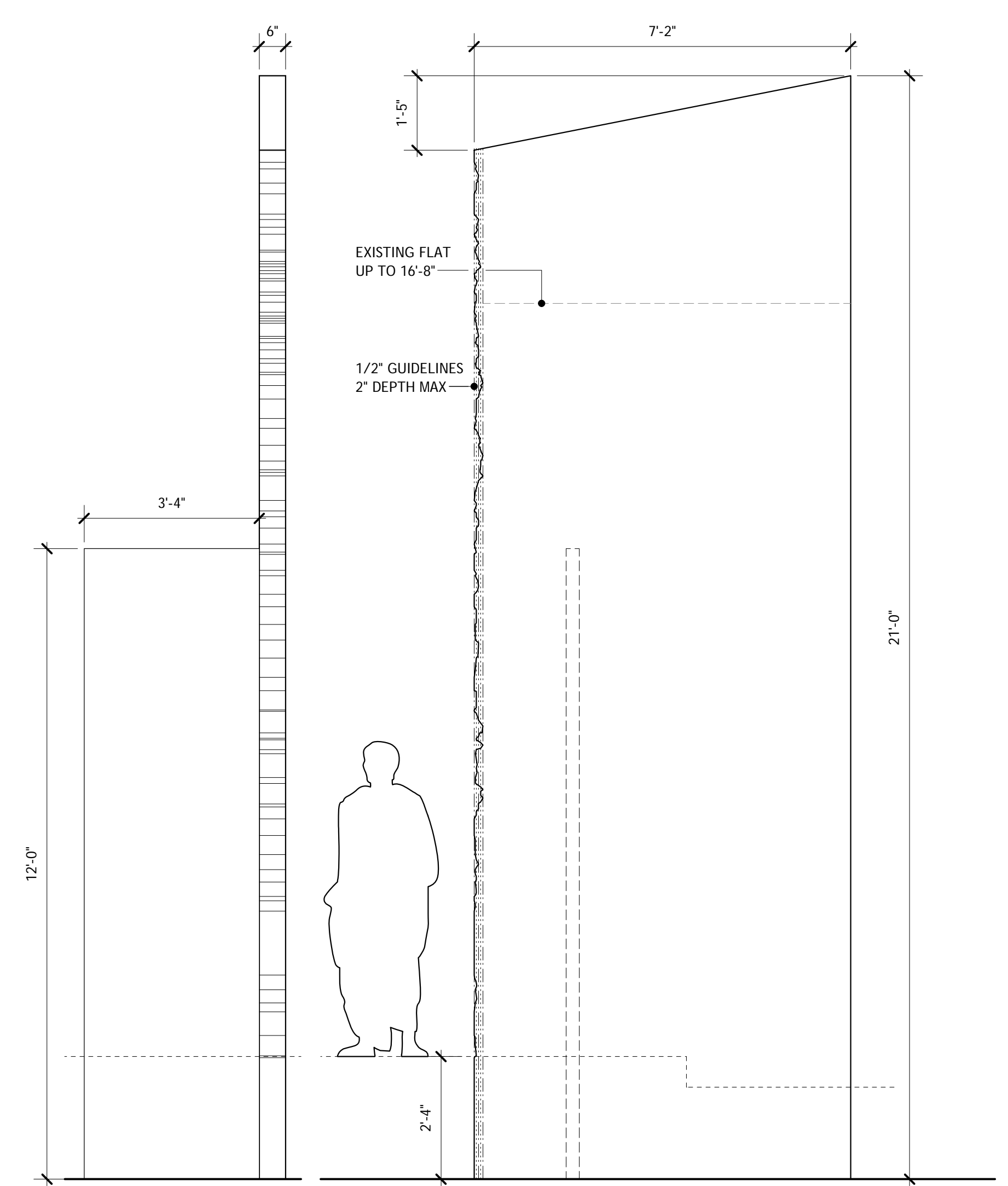
SIDE VIEW | U.S. STONE WALL  
1/2" = 1'-0"



PLAN VIEW | D.S. STONE WALL  
1/2" = 1'-0"

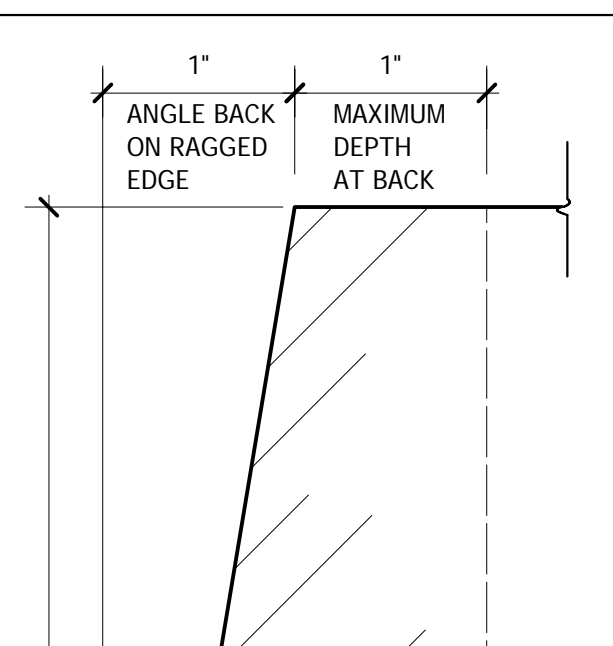


PLAN VIEW | U.S. STONE WALL  
1/2" = 1'-0"

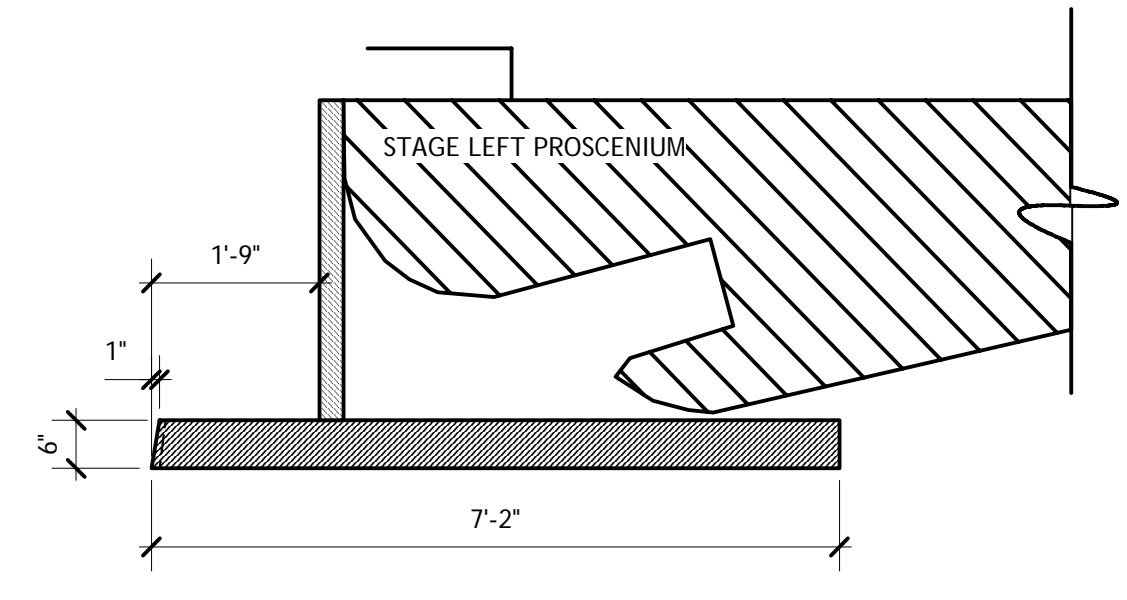


SIDE VIEW | RUST WALL  
1/2" = 1'-0"

FRONT VIEW | RUST WALL  
1/2" = 1'-0"

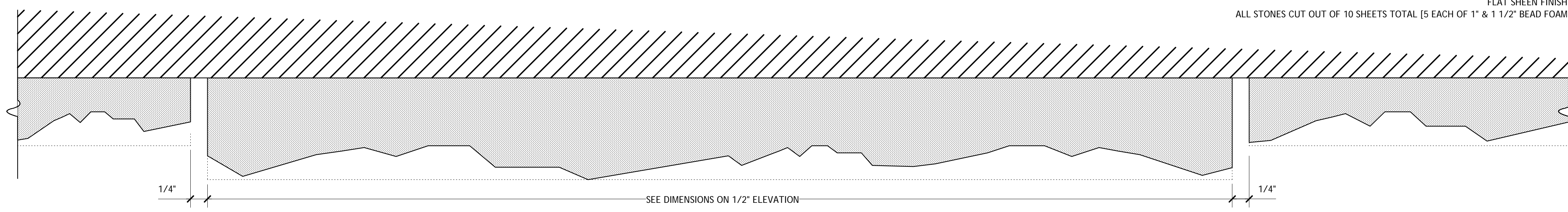


SECTION DETAIL OF ONSTAGE EDGE  
FULL SCALE



PLAN VIEW | RUST WALL  
1/2" = 1'-0"

NOTES ON THE STONES:  
1 1/2" STONES [LEVEL A] & 1" STONES [LEVEL B] W/ SURFACE TEXTURE ROUGHED UP TO 1/2" MAX DEPTH, MAY ALSO NEED TEXTURE APPLIED  
SIDES OF ALL STONES ARE CRISP/CLEAN  
FLAT SHEEN FINISH  
ALL STONES CUT OUT OF 10 SHEETS TOTAL [5 EACH OF 1" & 1 1/2" BEAD FOAM]



LEVEL B | 1" STONE

LEVEL A | 1 1/2" STONE

LEVEL B | 1" STONE

SECTION DETAIL OF RAISED STONES  
FULL SCALE

NOTES ON THE RUST WALL:  
ONLY ON STAGE EDGE IS RAGGED  
2" DEPTH MAXIMUM  
LOW RELIEF TEXTURE SKIM-COAT ON FRONT FACE  
FLAT SHEEN FINISH  
SKIN REVEAL WALL W/ PAINT TO MATCH PROSCENIUM

**METAMORPHOSES**

THE WALLS  
SCALE AS NOTED  
APRIL 7, 2007

DIRECTOR: RENE MORENO  
SCENIC DESIGNER: R. ERIC STONE  
TECHNICAL DIRECTOR: SCHUYLER SILVA

UIUC 2007

