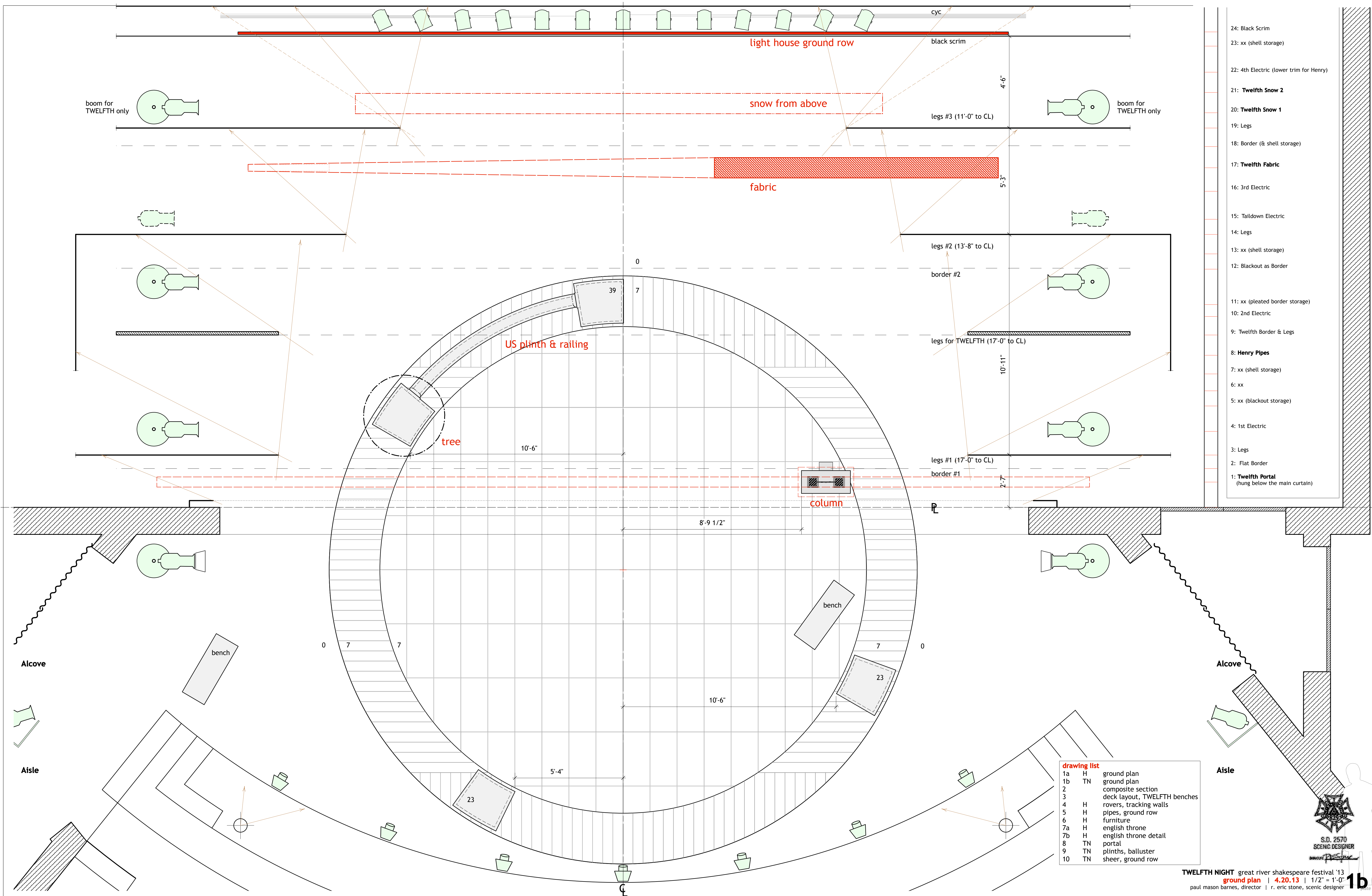


- 24: Black Scrim
- 23: xx (shell storage)
- 22: 4th Electric (lower trim for Henry)
- 21: **Twelfth Snow 2**
- 20: **Twelfth Snow 1**
- 19: Legs
- 18: Border (& shell storage)
- 17: **Twelfth Fabric**
- 16: 3rd Electric
- 15: Taildown Electric
- 14: Legs
- 13: xx (shell storage)
- 12: Blackout as Border
- 11: xx (pleated border storage)
- 10: 2nd Electric
- 9: Twelfth Border & Legs
- 8: **Henry Pipes**
- 7: xx (shell storage)
- 6: xx
- 5: xx (blackout storage)
- 4: 1st Electric
- 3: Legs
- 2: Flat Border
- 1: **Twelfth Portal**
(hung below the main curtain)

drawing list

1a	H	ground plan
1b	TN	ground plan
2		composite section
3		deck layout, TWELFTH benches
4	H	rovers, tracking walls
5	H	pipes, ground row
6	H	furniture
7a	H	english throne
7b	H	english throne detail
8	TN	portal
9	TN	plinths, balluster
10	TN	sheer, ground row



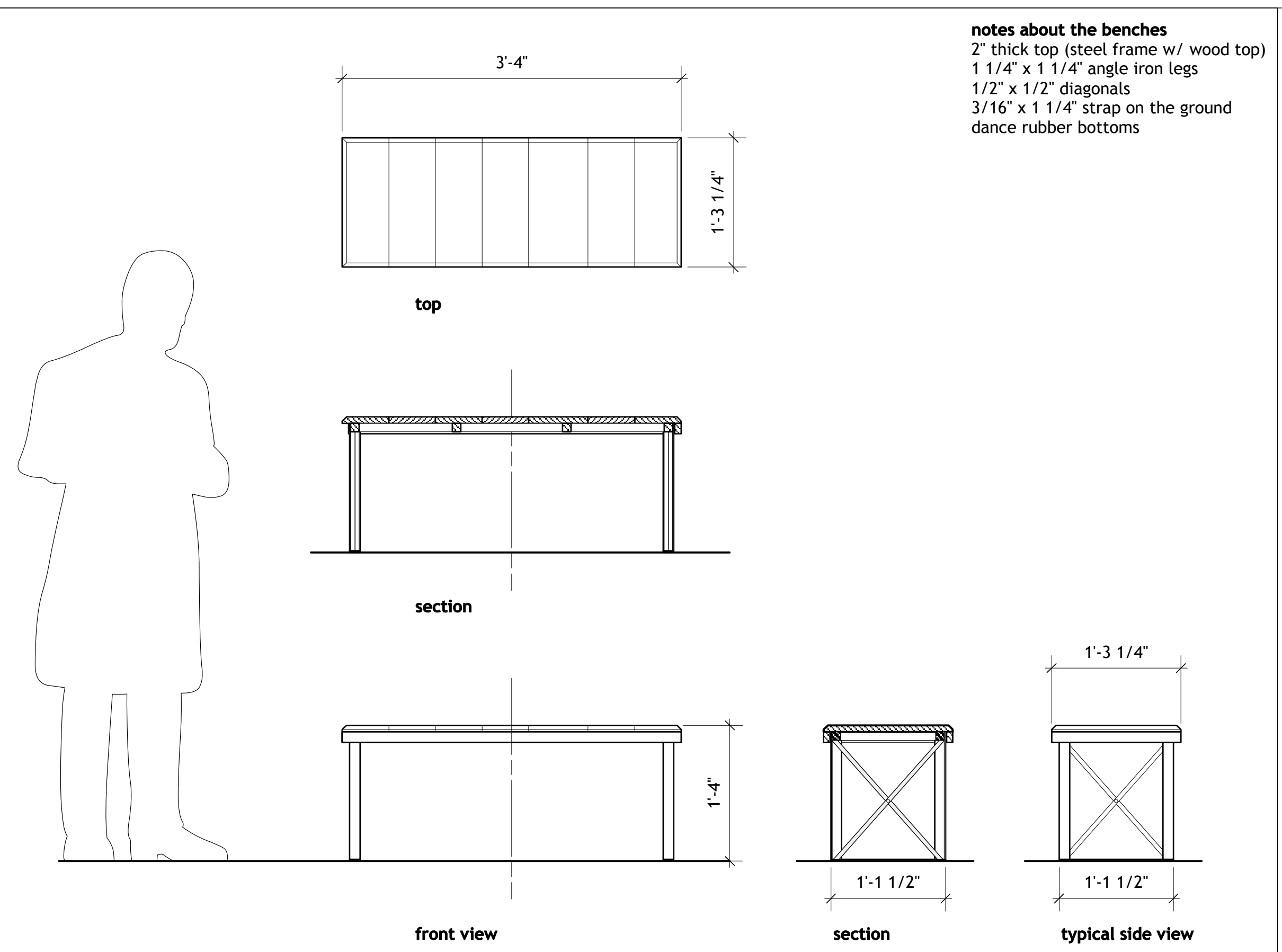


- 24: Black Scrim
- 23: xx (shell storage)
- 22: 4th Electric (lower trim for Henry)
- 21: **Twelfth Snow 2**
- 20: **Twelfth Snow 1**
- 19: Legs
- 18: Border (& shell storage)
- 17: **Twelfth Fabric**
- 16: 3rd Electric
- 15: Taildown Electric
- 14: Legs
- 13: xx (shell storage)
- 12: Blackout as Border
- 11: xx (pleated border storage)
- 10: 2nd Electric
- 9: Twelfth Border & Legs
- 8: **Henry Pipes**
- 7: xx (shell storage)
- 6: xx
- 5: xx (blackout storage)
- 4: 1st Electric
- 3: Legs
- 2: Flat Border
- 1: **Twelfth Portal**
(hung below the main curtain)

drawing list

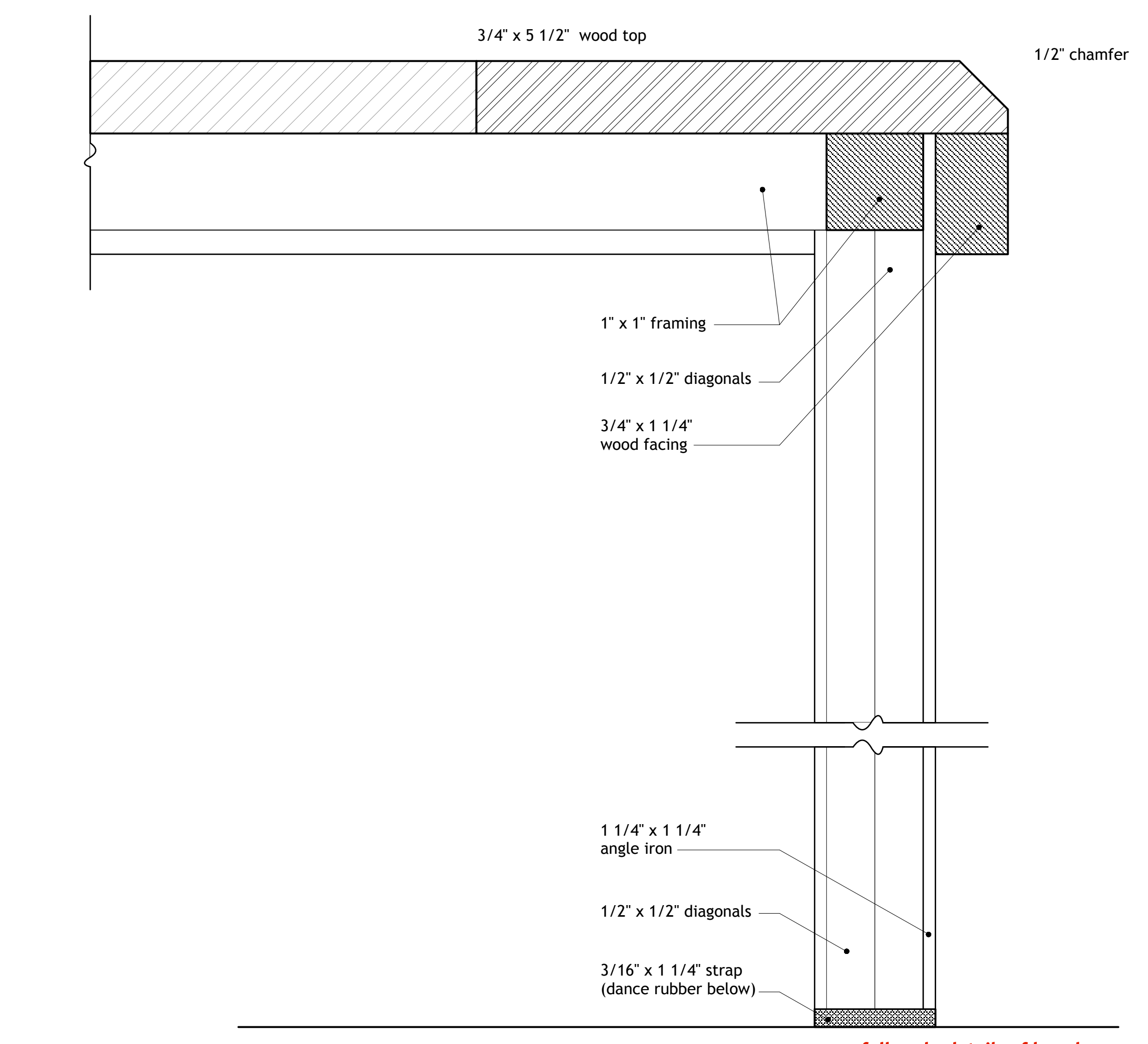
1a	H	ground plan
1b	TN	ground plan
2		composite section
3		deck layout, TWELFTH benches
4	H	rovers, tracking walls
5	H	pipes, ground row
6	H	furniture
7a	H	english throne
7b	H	english throne detail
8	TN	portal
9	TN	plinths, balluster
10	TN	sheer, ground row



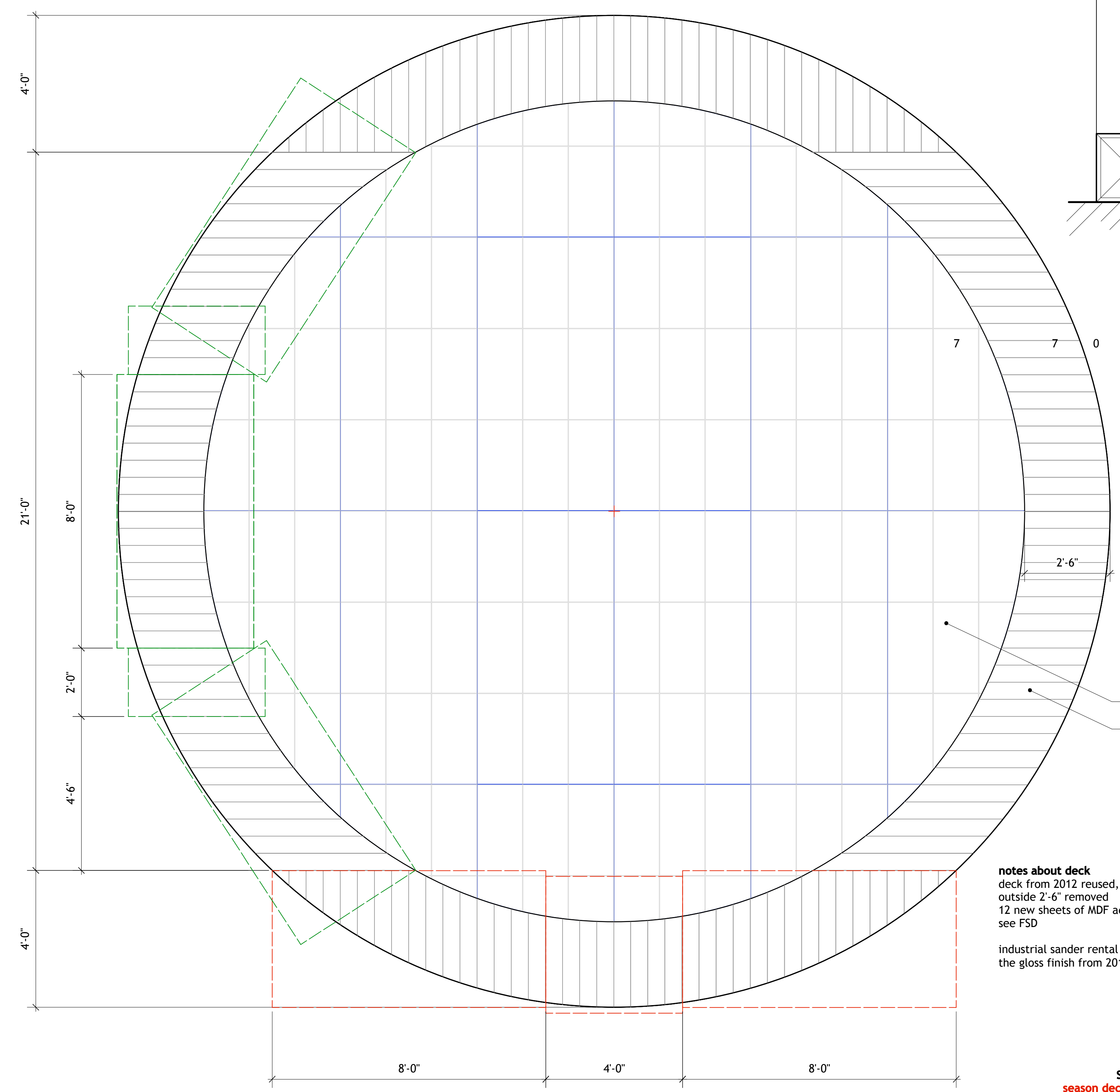


notes about the benches
 2" thick top (steel frame w/ wood top)
 1 1/4" x 1 1/4" angle iron legs
 1/2" x 1/2" diagonals
 3/16" x 1 1/4" strap on the ground
 dance rubber bottoms

**benches for TWELFTH NIGHT
 build 2**

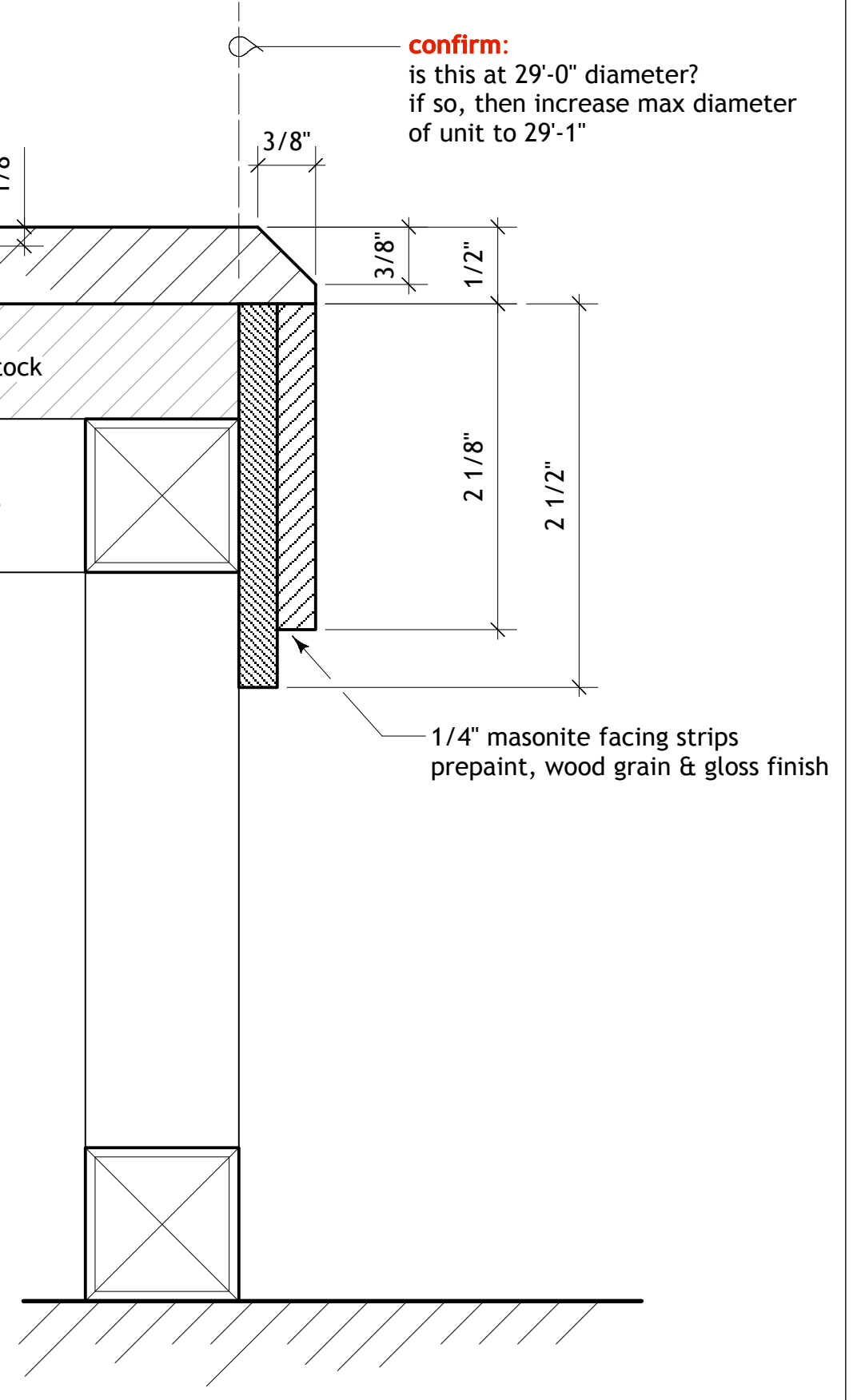


full scale details of benches



notes about deck
 deck from 2012 reused, rotated so grout is US/DS
 outside 2'-6" removed
 12 new sheets of MDF added: 1/2" thick, 3/8" chamfer, 1/8" kerfs 6" oc
 see FSD

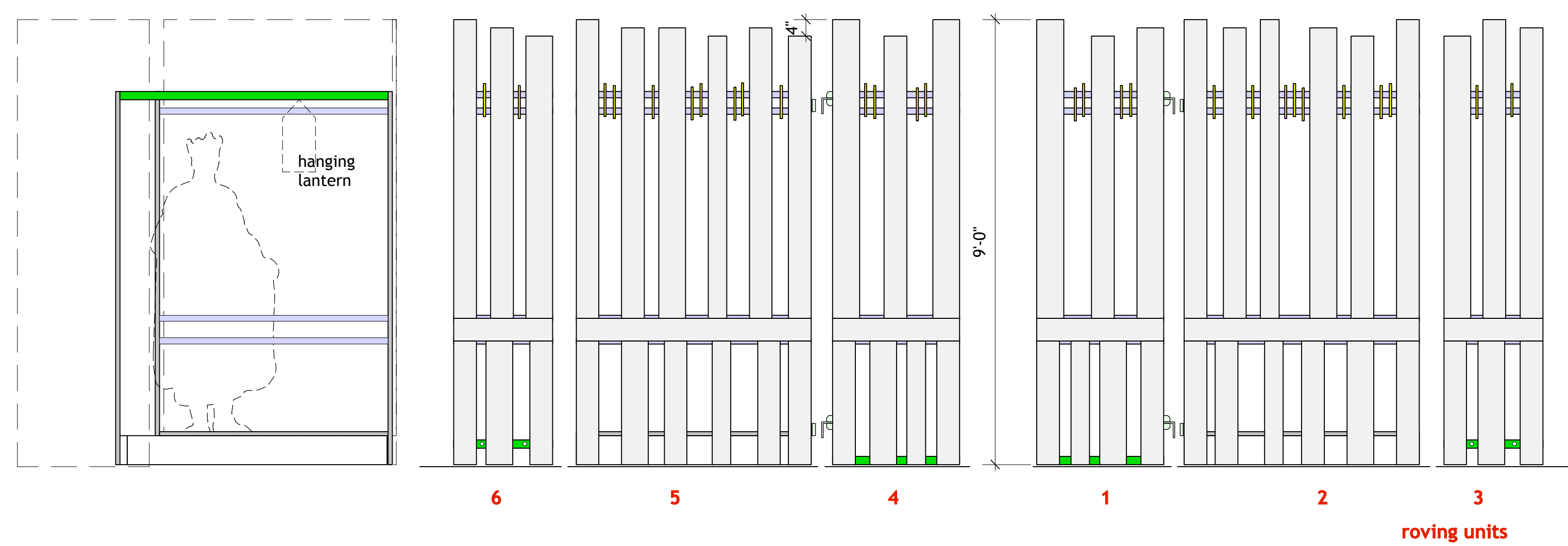
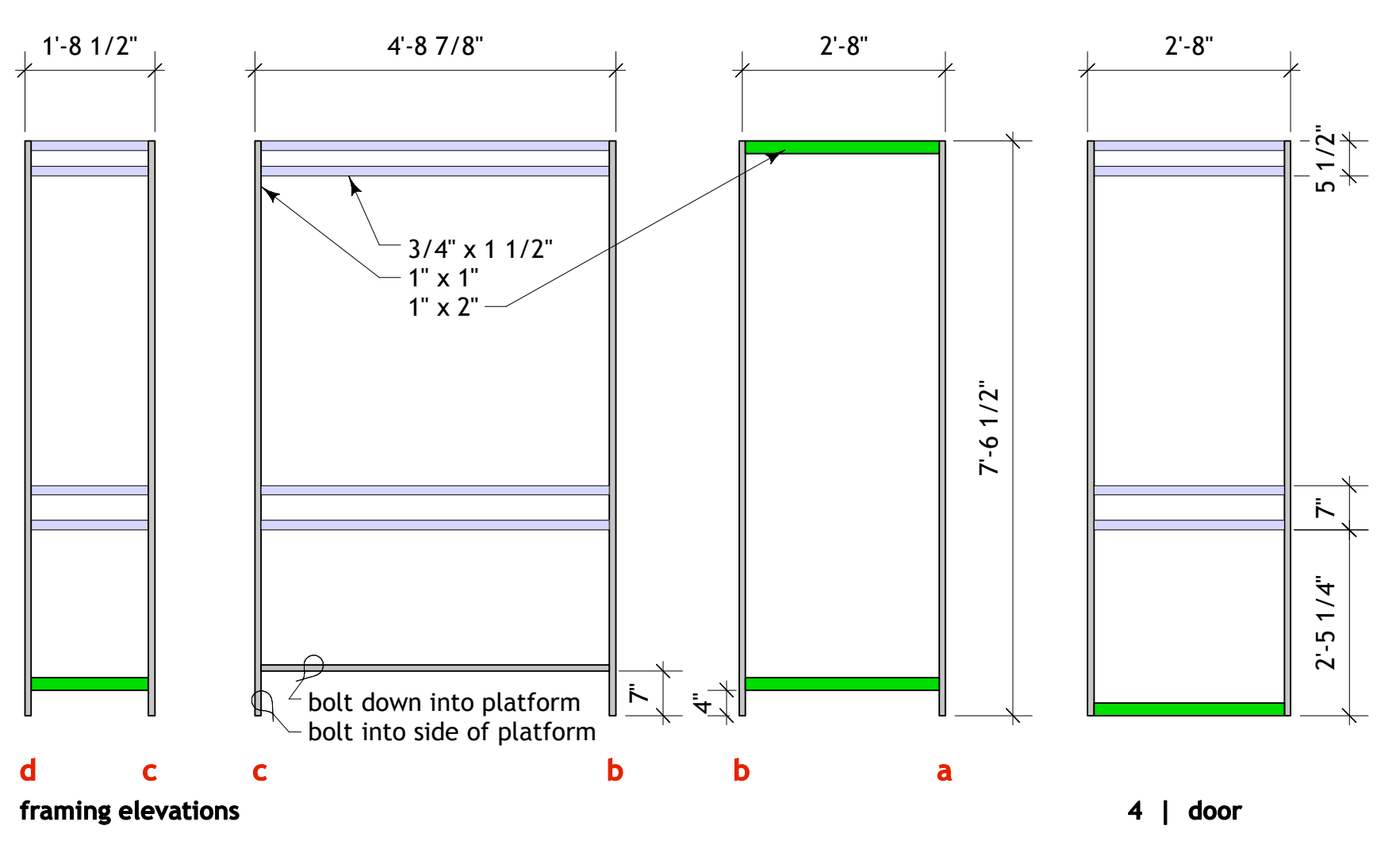
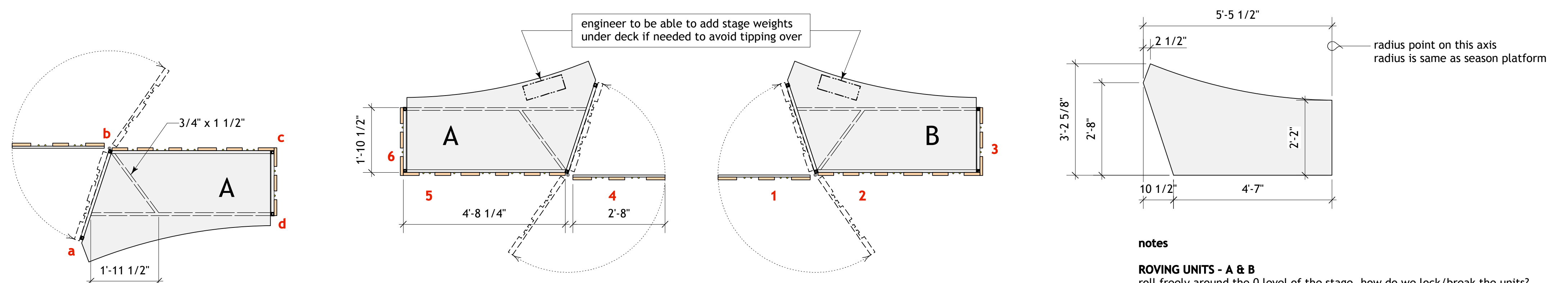
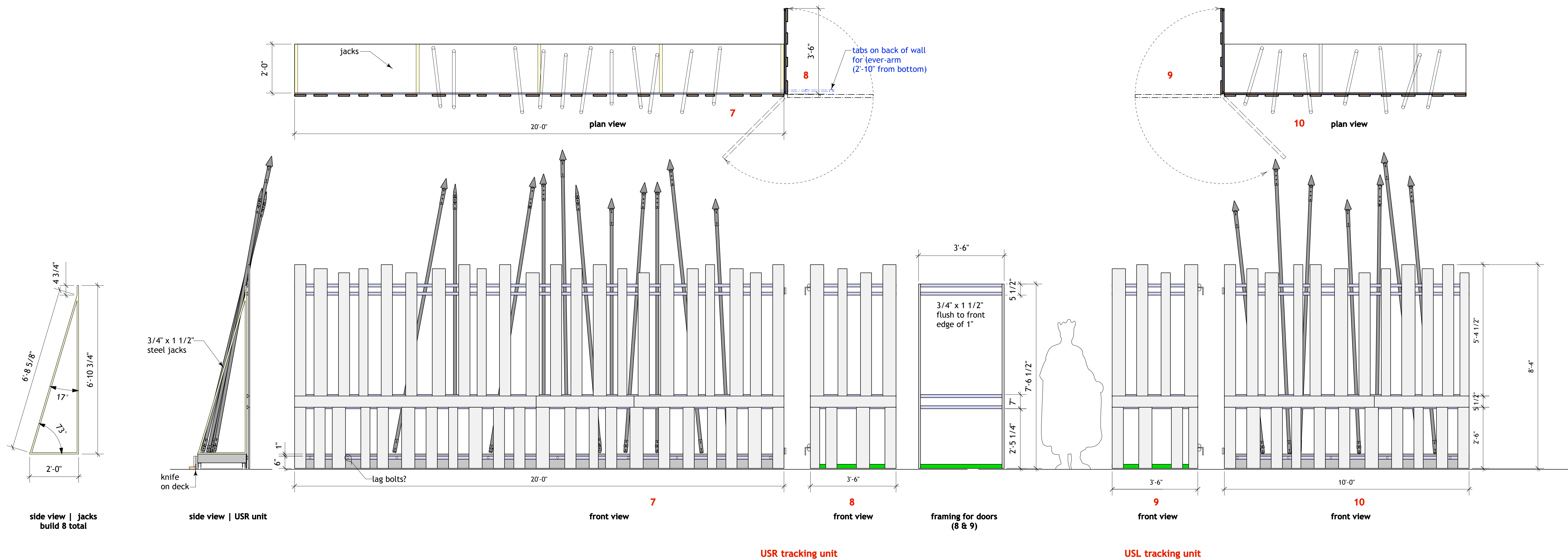
industrial sander rental needed to knock down
 the gloss finish from 2012



typical section | full scale

confirm:
 is this at 29'-0" diameter?
 if so, then increase max diameter
 of unit to 29'-1"





ROVING UNITS - A & B
 roll freely around the 0 level of the stage, how do we lock/break the units?
 panels #1 & 4 hinge -170 degrees, discuss how the panels lock down
 verticals are recycled barn wood, 4 1/2", 5 1/2" & 6 1/2" widths
 decks have the same wood treatment as the season ring (6" route OC into 1/2" mdf)
 steel is 1" x 1", 3/4" x 1 1/2", 1" x 2" box
 small verticals are 1/2" x 8" copper, hex-head tex screw to attach (top only)
 curve matches 14'-6" radius of the season ring
 confirm height of season deck PRIOR to construction
 lid of rovers needs to be the same height
 adjust overall pipe and facing height as needed to do so
 1/2" clearance enough

TRACKING UNITS
 USL unit tracks SL/SR 7'-0" total
 USR unit tracks SL/SR 13'-7" total
 tracking guides on US side of units, next to #3 legs (do not need to rep)
 straight casters, engage swivel casters for changeover
 discuss how the panels #8 & 9 hinge/lock
 decks are same treatment as season ring
 additional hardware needed to attach swords to front of tracking units
 spears are from LEAR
 1/2" clearance enough

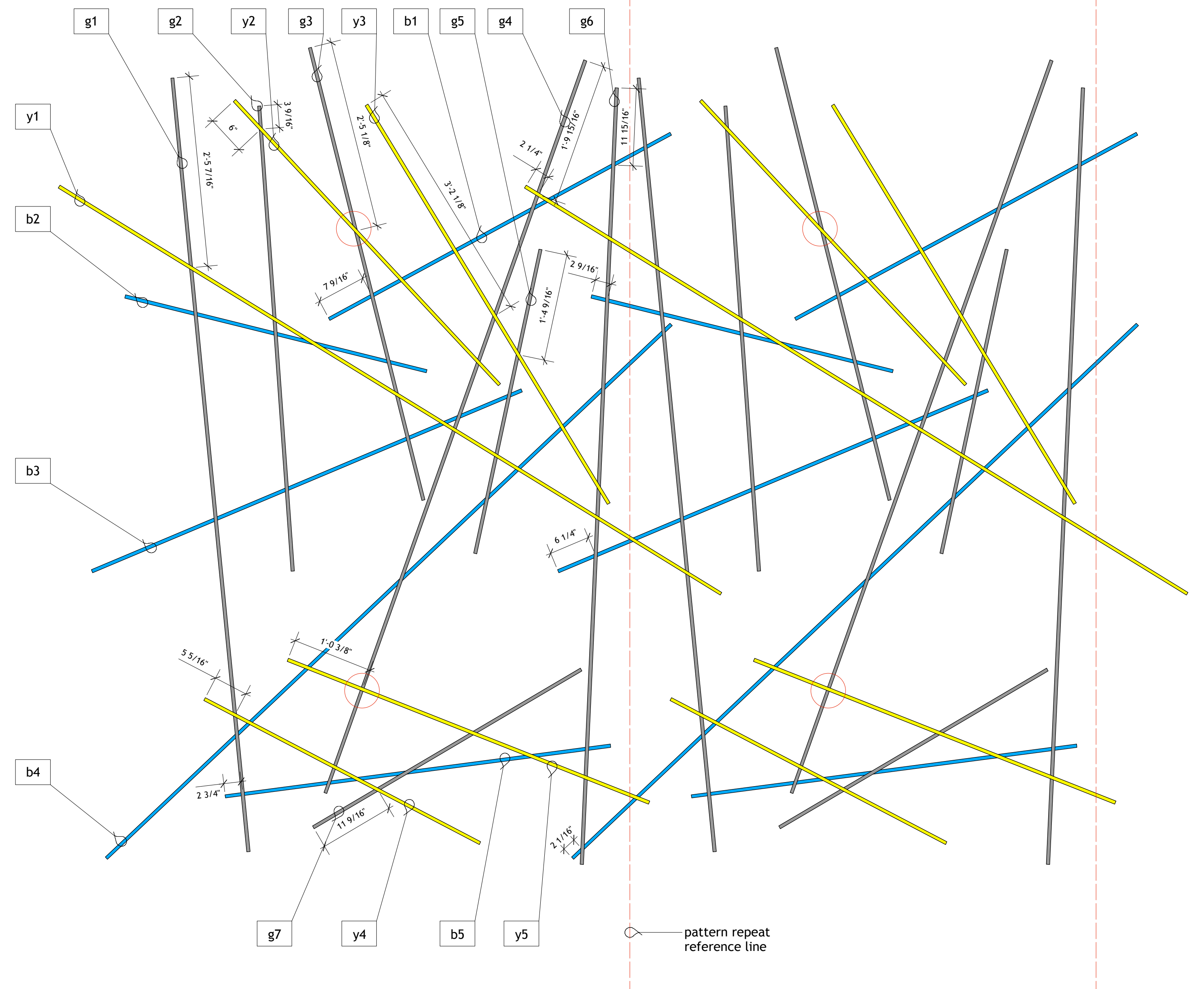
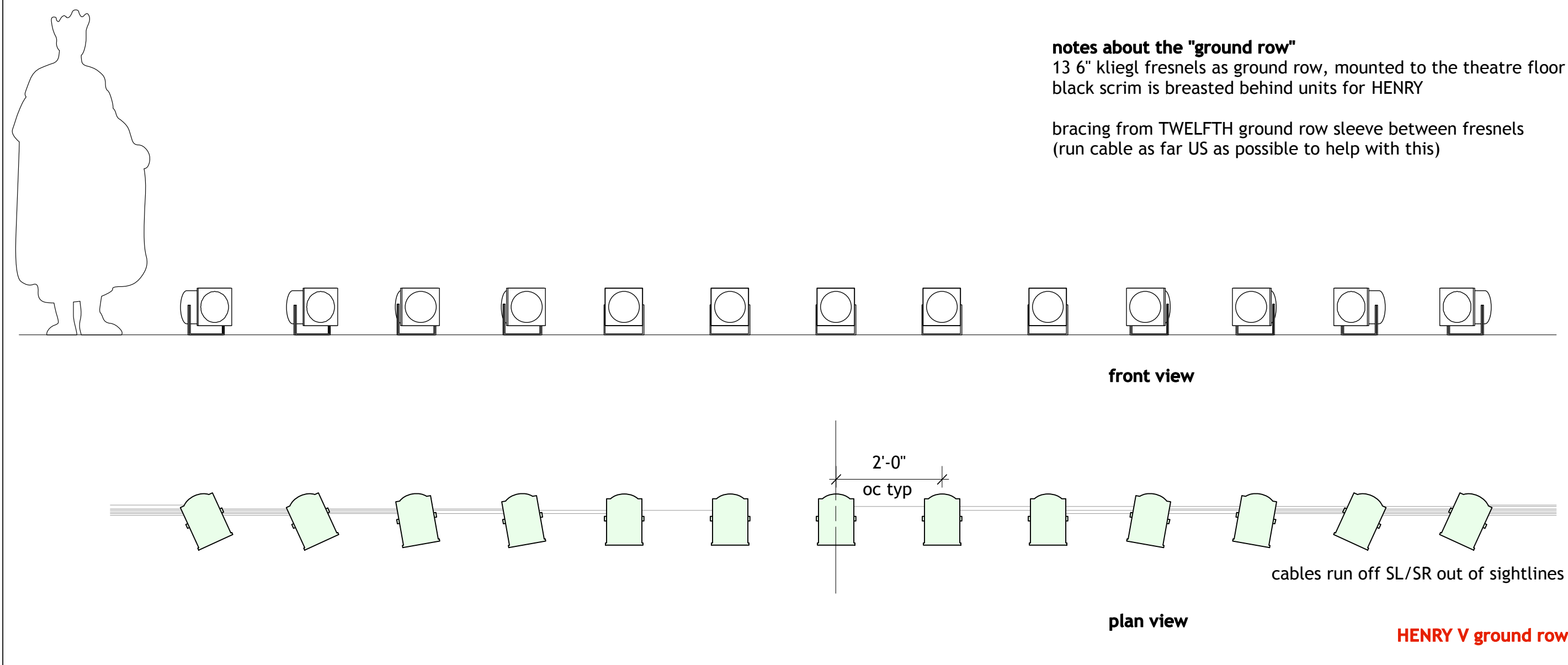
vendor information
 reclaimed red barn wood
www.minnesotabarnwood.com/siding/

\$2.25 /sqft. in Lonsdale, MN
 300 sqft. needed total

HENRY V great river shakespeare festival '13
 wall elevations | 4.20.13 | 1/2" = 1'-0"
 james edmonson, director | r. eric stone, scenic designer

S.D. 2570
 SCENIC DESIGNER



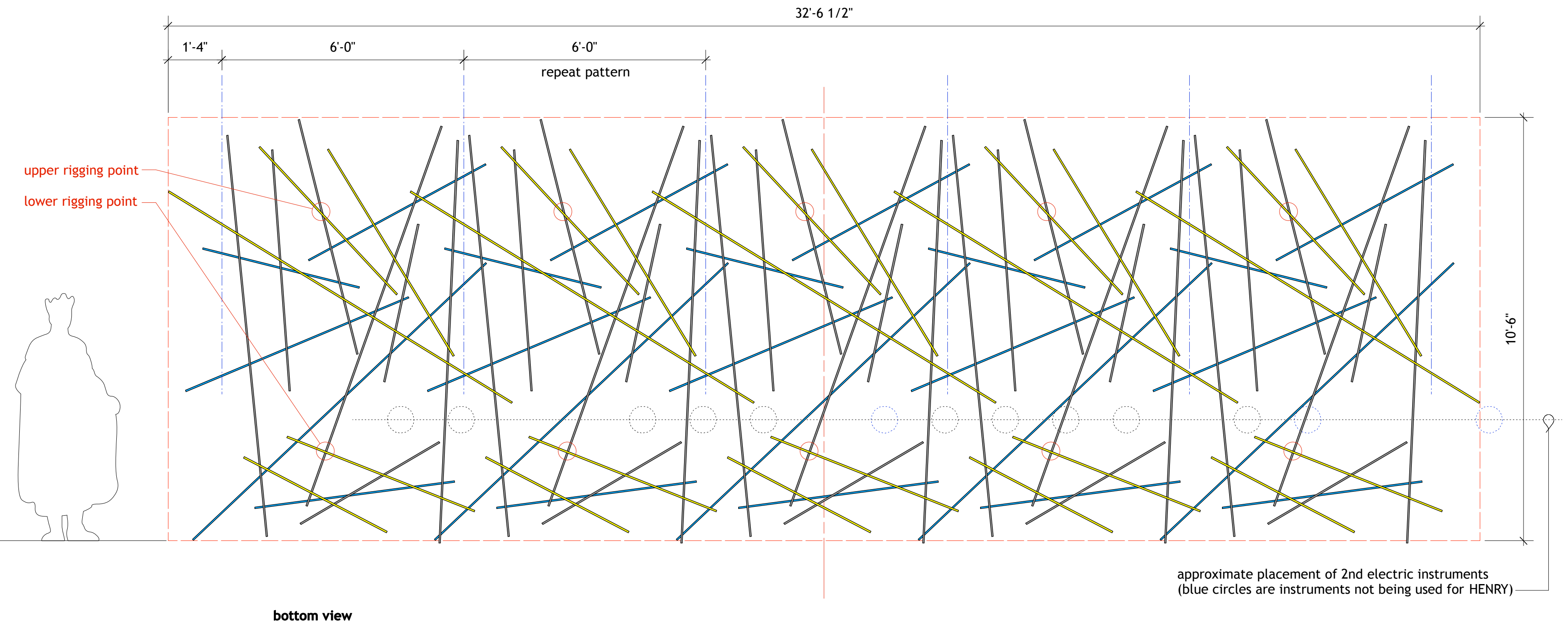
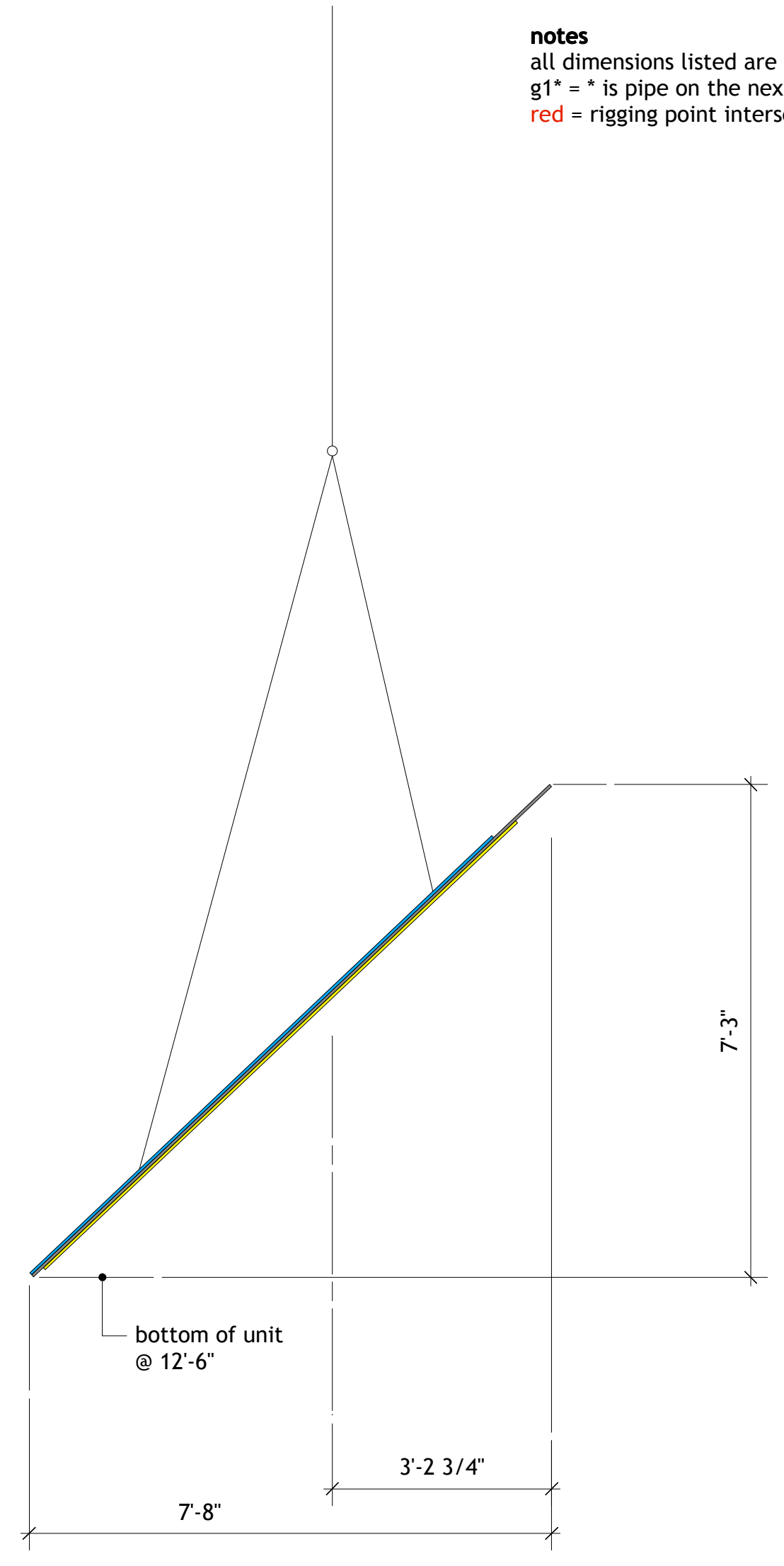


g1 10'-0" with distance	g2 6'-0" with distance	g3 6'-0" with distance	g4 10'-0" with distance	g5 4'-0" with distance	g6 10'-0" with distance	g7 4'-0" with distance
y1 2'-5 7/16"	y2 3 9/16"	y2 2'-5 1/8"	y1 1'-9 15/16"	y3 1'-4 9/16"	b1 11 15/16"	y4 11 9/16"
b2 7 1/8"	y1 2'-5 7/16"	b1 10 5/16"	b1 2 3/8"	b3 6 9/16"	y1* 11 3/8"	b5 5 3/16"
b3 2'-7 13/16"	b2 2 5/16"	b2 10 9/16"	y2 1'-5 9/16"	y1 9 3/8"	b2* 9 9/16"	y5 11 15/16"
b4 2'-6 7/16"	y3 2'-0"	y1 5 3/16"	y2 7 9/16"	b4 6 7/8"	b4 1'-1 5/8"	
y4 3 1/16"		b3 6 15/16"	b3 9"		y3 1'-3 3/16"	
b5 9 1/4"			y1 2 1/16"		y1 4 11/16"	
			b4 2'-0 5/8"		b3* 5 7/8"	
			y5 1'-5 7/8"		b5 2'-5 7/8"	
			y4 1'-0 3/4"		y5 4 7/16"	
			b5 2 9/16"		b4* 11"	

b1 5'-0" with distance	b2 4'-0" with distance	b3 6'-0" with distance	b4 10'-0" with distance	b5 5'-0" with distance
g3 7 9/16"	g6* 2 9/16"	g6* 6 1/4"	g6* 2 1/16"	g1 2 3/4"
g4 2'-4 3/16"	g1 8 11/16"	g1 1'-2 7/16"	g1 2'-1 11/16"	g1 1'-1 7/11/16"
g6 1'-2 3/16"	g2 1'-0 3/4"	g2 11 15/16"	g4 2'-10 3/4"	g7 1'-0"
g1* 5 5/8"	g3 1'-6"	g3 1'-8 1/4"	g5 1'-6 5/16"	g6 2'-4 3/16"
		g4 8 1/2"	g6 2'-0 11/16"	
		g5 8 7/16"	g1* 1'-0 7/8"	

y1 10'-0" with distance	y2 5'-0" with distance	y3 6'-0" with distance	y4 4'-0" with distance	y5 5'-0" with distance
g4* 2 1/4"	g2 6"	g4 3'-2 1/8"	g1 5 5/16"	g4 1'-0 3/8"
g6* 1'-1 1/16"	g3 1'-9 1/2"	g5 6 15/16"	g4 1'5 3/8"	g7 1'-6 1/2"
g1 8 9/16"	g4 2'-3 11/16"	g6 2'-0"	g7 7 1/2"	g6 1'-6 11/16"
g2 1'-3 1/8"				
g3 1'-10 3/16"				
g4 10 7/16"				
g5 7 5/8"				
g6 1'-6 3/8"				
g1* 1'-4 1/4"				

notes
 all dimensions listed are on center
 g1* = * is pipe on the next pattern over
 red = rigging point intersection



pipe layout | hole information | 1" = 1'-0"

pipe notes
 gray pipes are the center core
 blue pipes are behind
 yellow pipes are in front

55 total 10' length needed

color	10' lengths	6' lengths	5' lengths	4' lengths
gray	15	10	0	10
blue	5	5	5	5
yellow	5	5	5	5

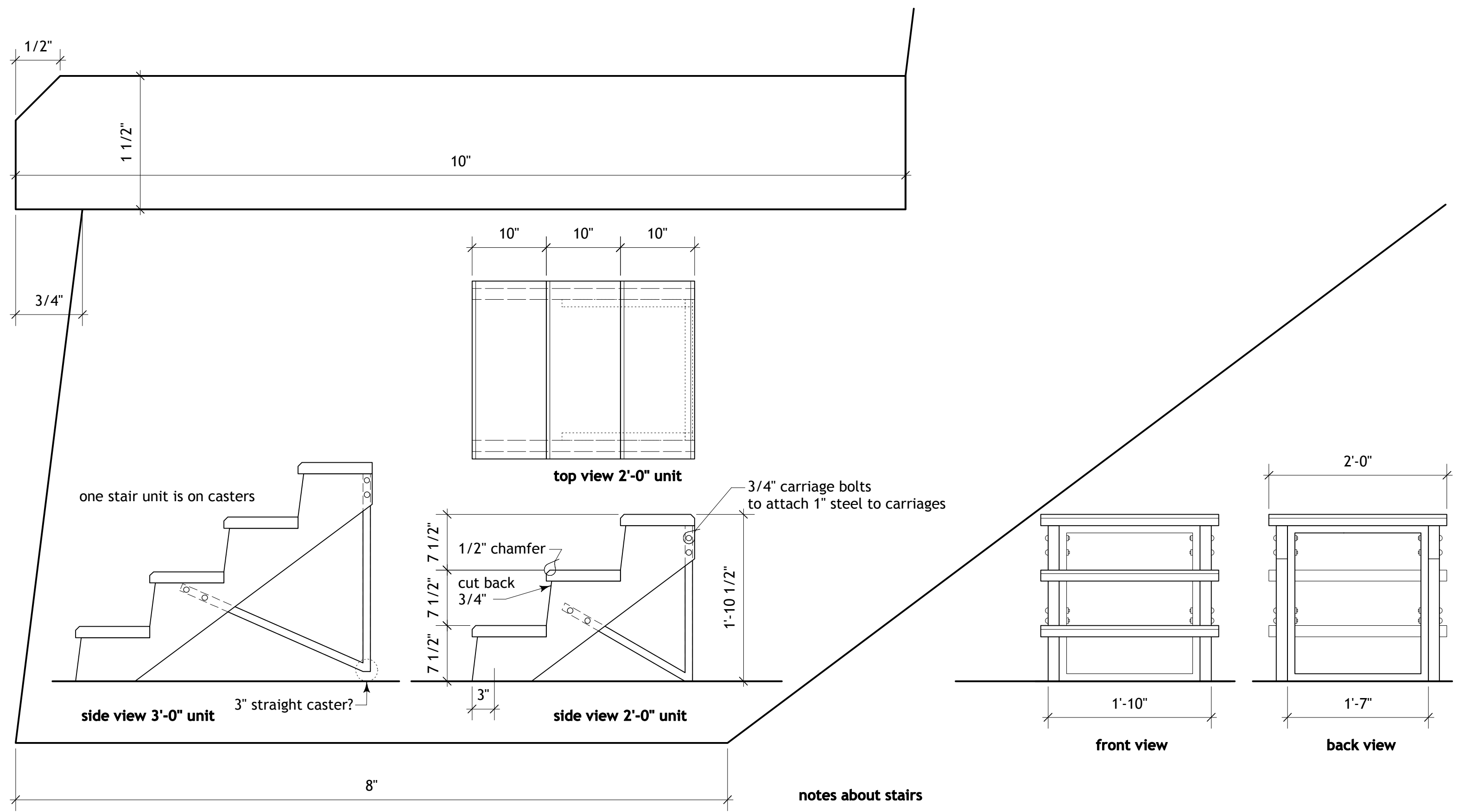
see chart for pipe ID numbers, intersections & dimensions

notes about pipes
 1/2" electrical conduit, 10', 6', 5', 4' lengths (55 total 10' units)
 unit is divided in to 3 layers
 layers are bolted together
 joints are dressed with thin sissel
 finish is gloss black
 lives on lineset #8

unit is layed out in a 5 repeating cells, spaced 6'-0" apart

the rigging idea
 fln/out in/out for changeover (vertically)
 the US pick point attached to the lower rigging points
 fly the unit up at the drawn angle



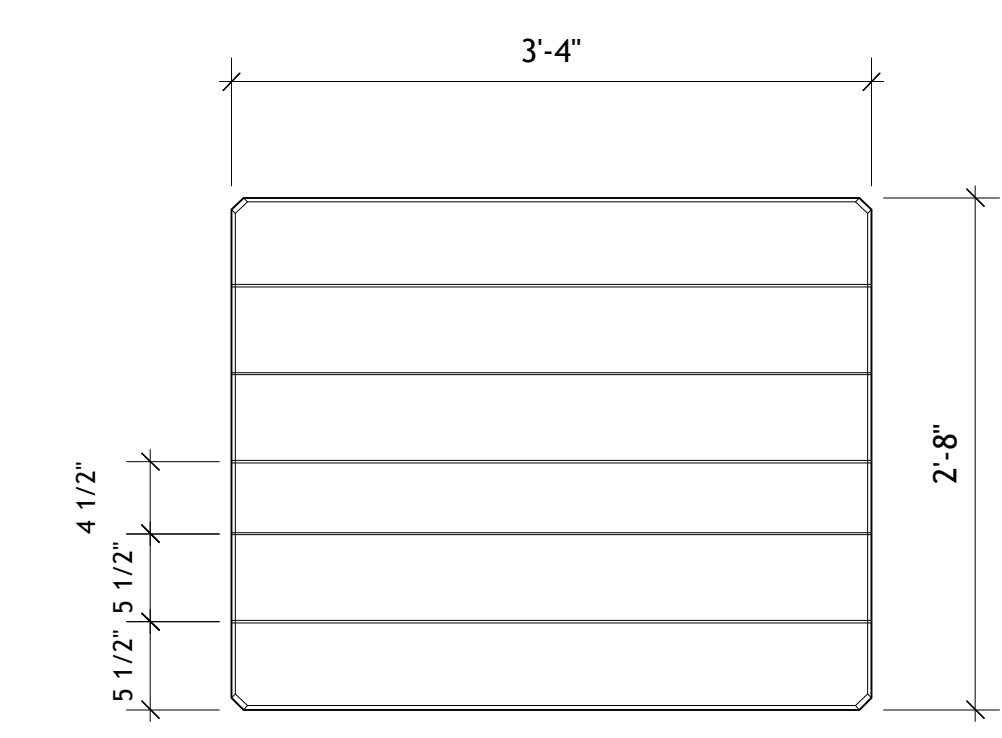


full scale detail of bottom step

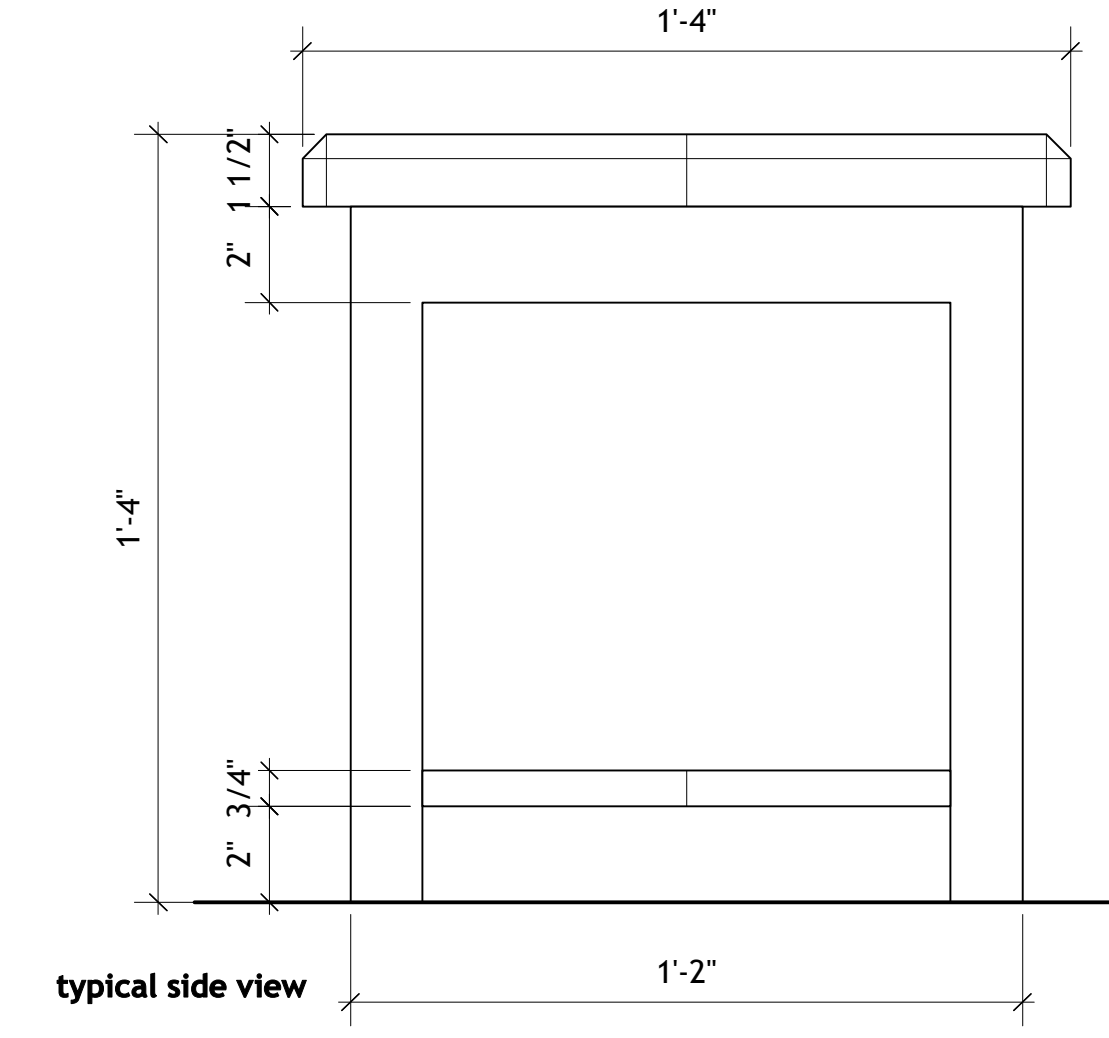
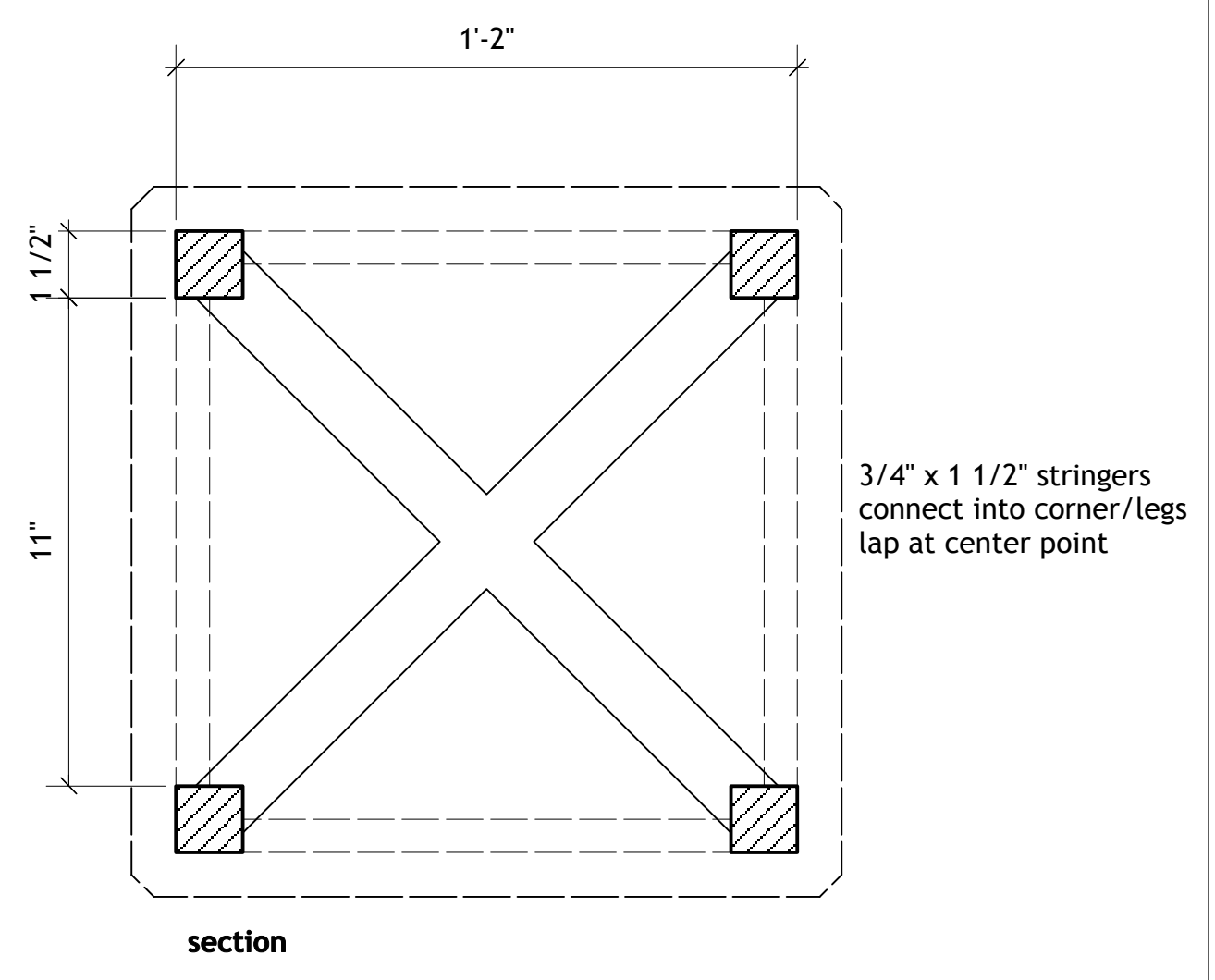
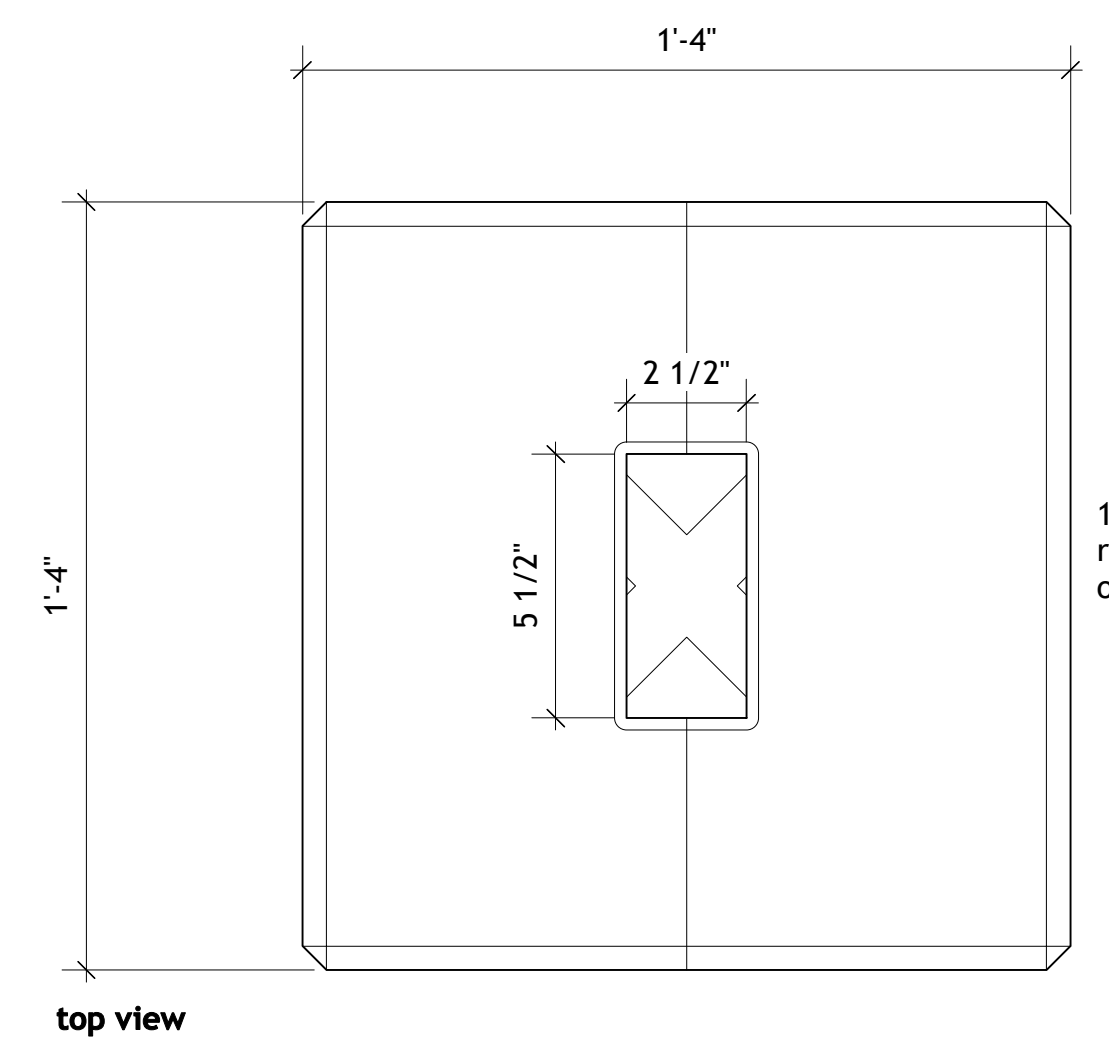
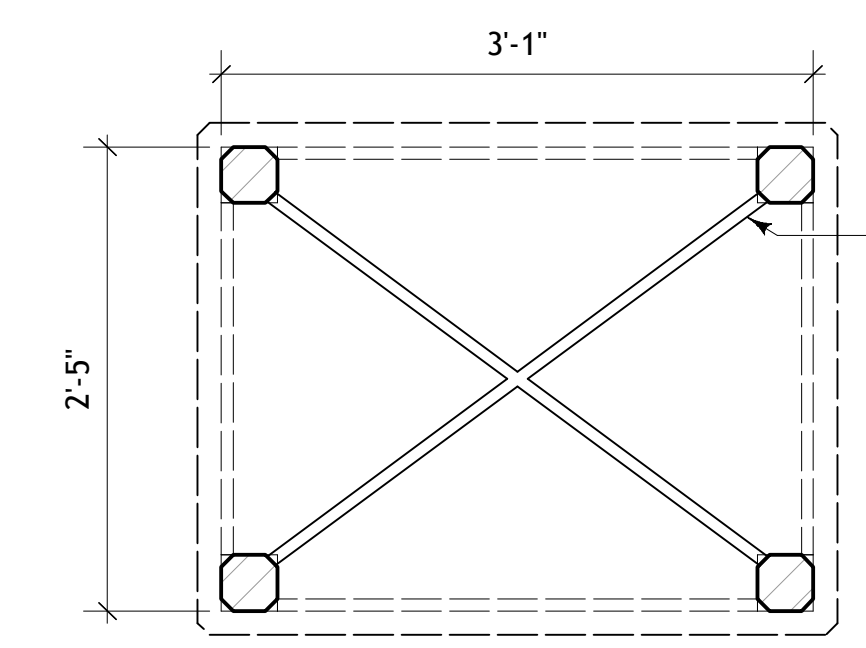
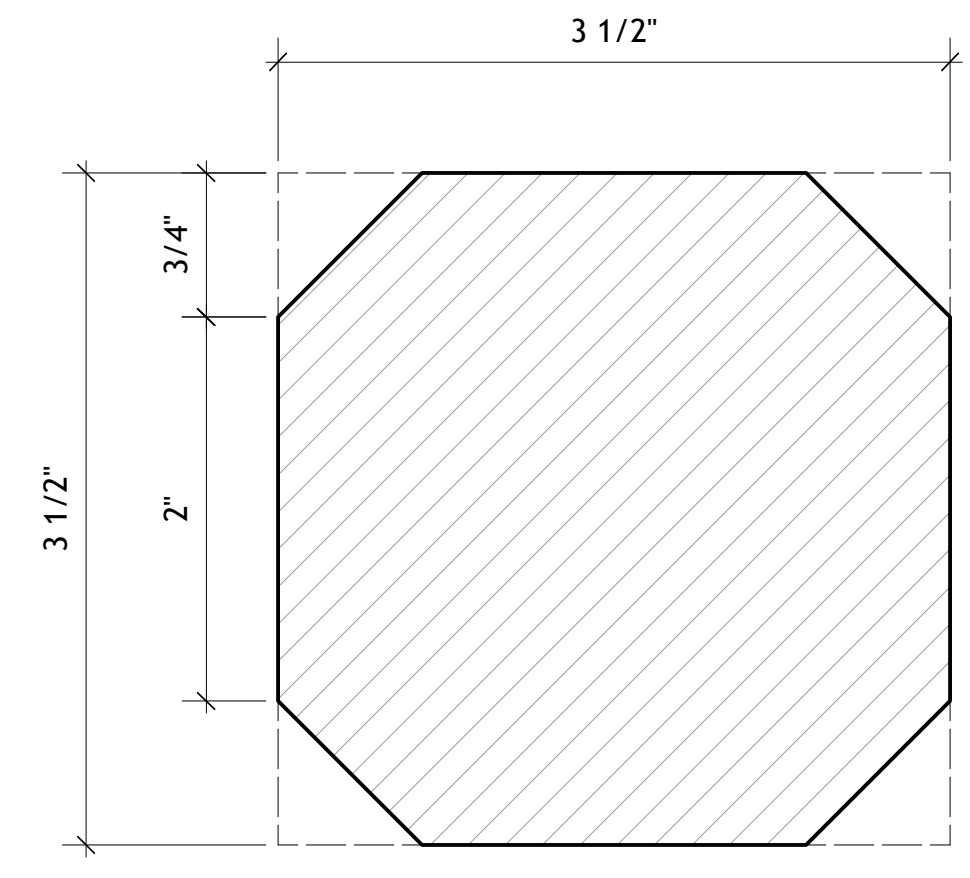
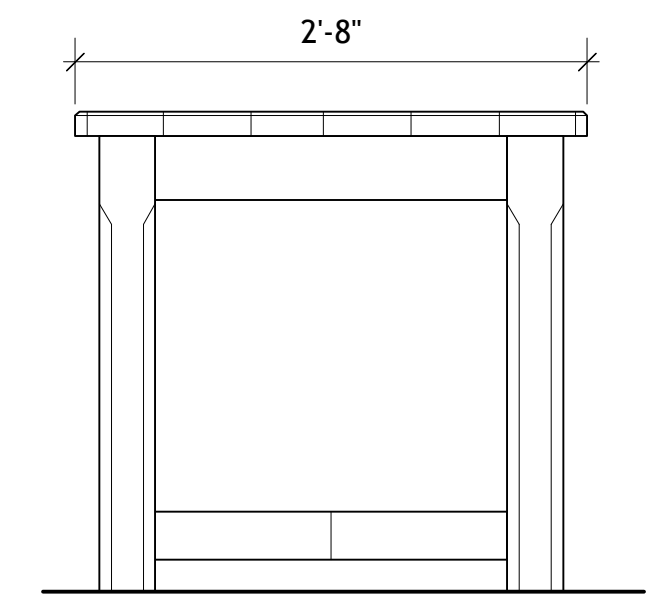
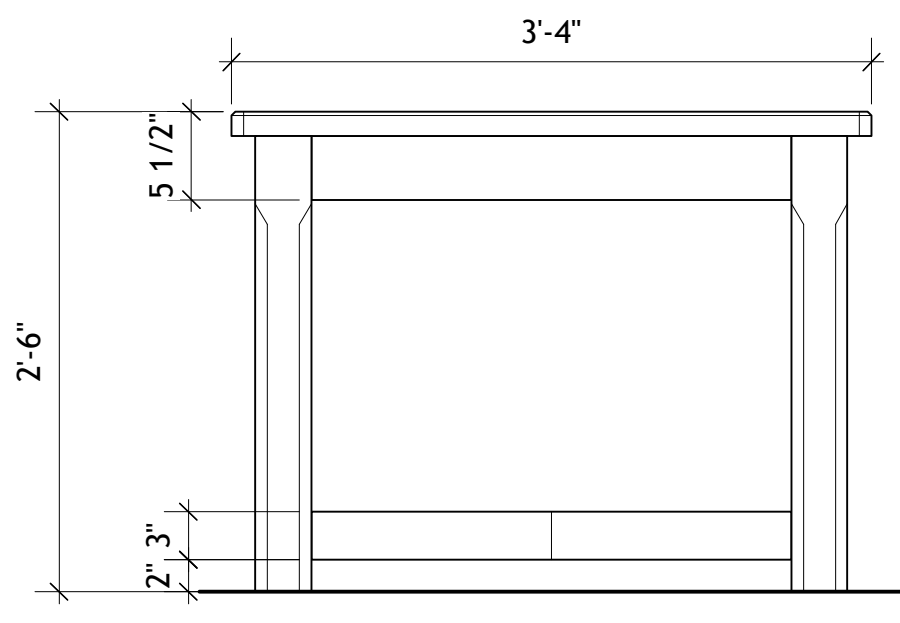
notes about stairs

tables are stood on, turned on sides, drug, carried
 dance rubber on bottoms
 finish is dark, warn wood
 2x & 1x wood construction w/ 1" steel legs

build 2 @ 2'-0" (3 steps)
 build 1 @ 3'-0" (4 steps w/ wheels)
 the stairs | 1" = 1'-0"



notes about tables
 build 2 units
 tables are stood on, turned on sides, drug, carried
 dance rubber on bottoms
 finish is dark, warn wood
 wood construction
 4x legs
 2x6 top

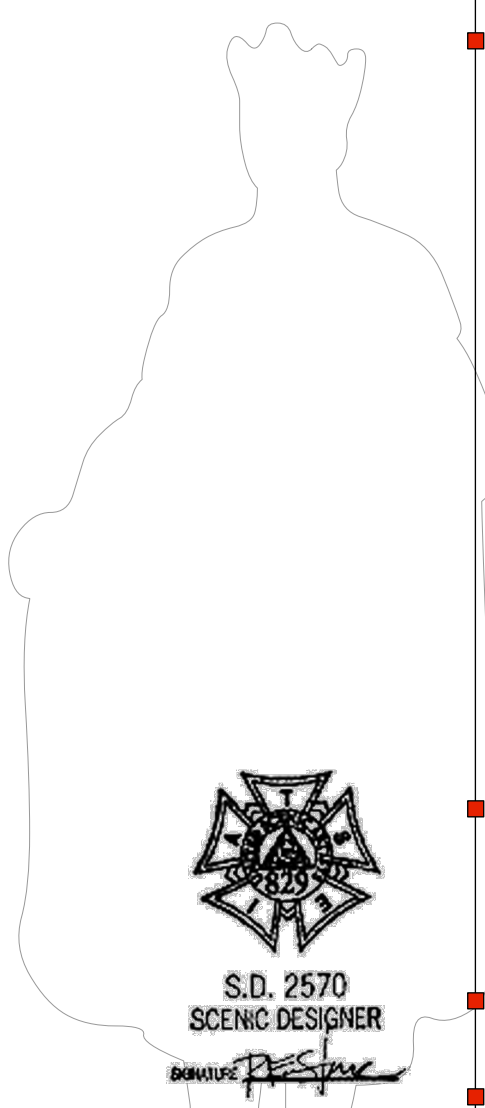


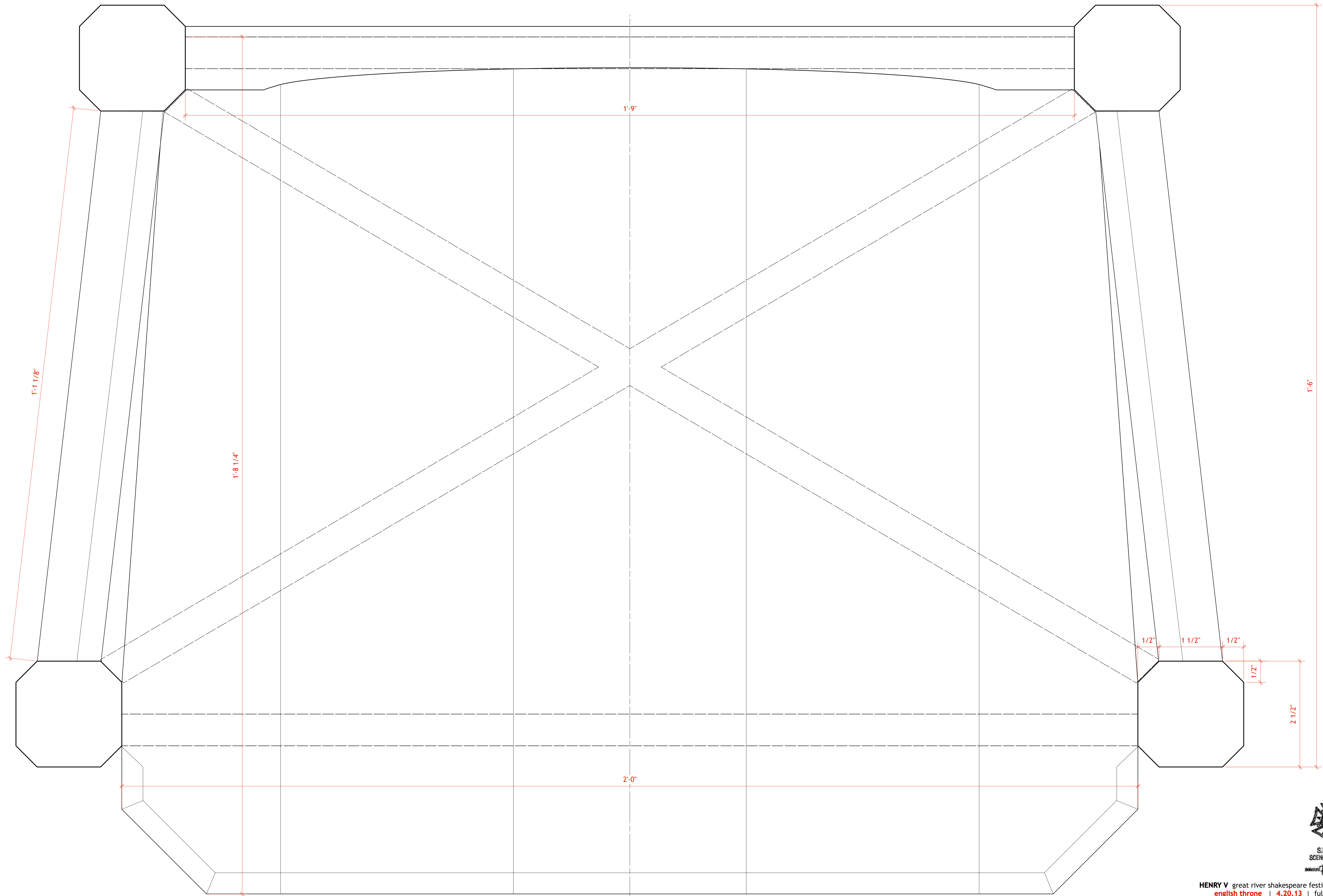
notes about stools

stools are stood on, turned on sides, drug, carried
 dance rubber on bottoms
 finish is dark, warn wood
 2x & 1x wood construction

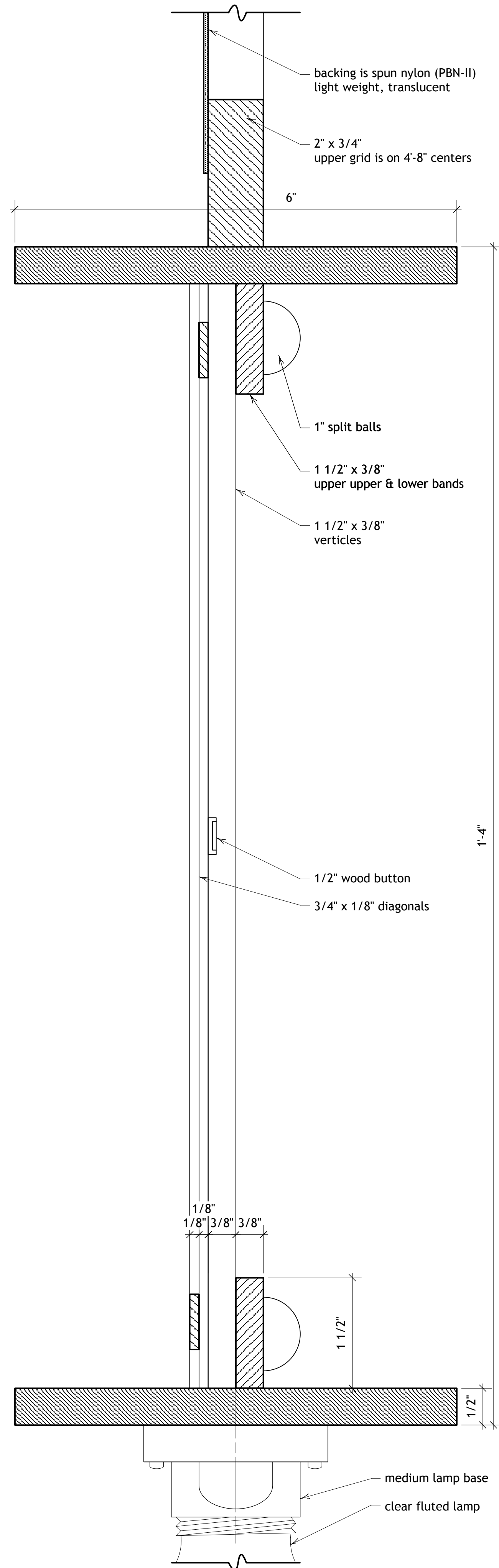
build 5
 stools | 3" = 1'-0"

build 2
 tables | 1" = 1'-0" & full scale





S.D. 2570
SCENIC DESIGNER



full scale section detail of typical I-beam

vendor information

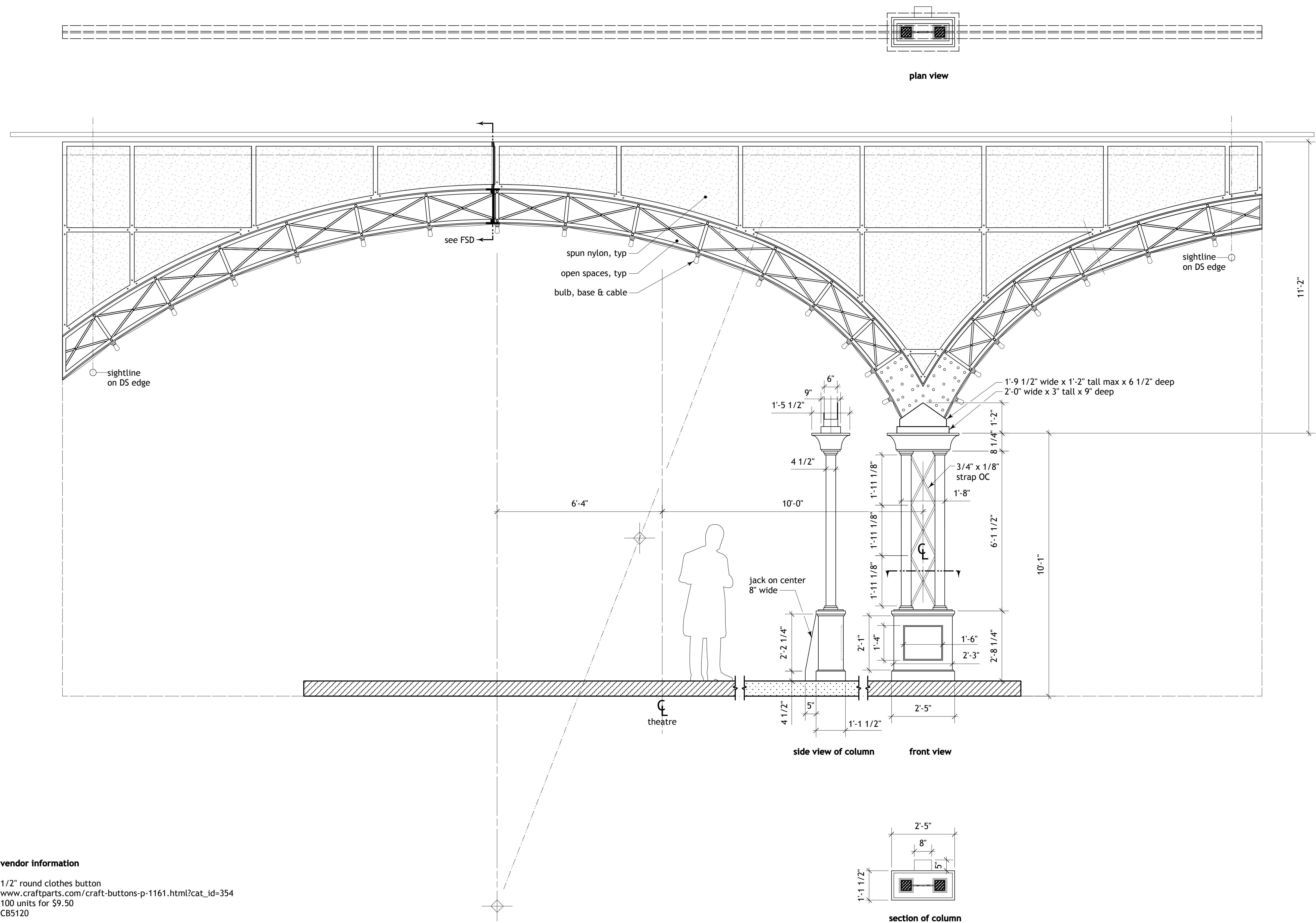
1/2" round clothes button
www.craftparts.com/craft-buttons-p-1161.html?cat_id=354
 100 units for \$9.50
 CB5120

1" split balls (1/2" thick)
www.craftparts.com/split-balls-p-1324.html
 100 units for \$11.00
 CPB100

spun nylon
 PBN-II
 57" wide x 245 yards
www.cerex.com

cleat socket medium base 660w
 model number: s752w-sp
 menards sku: 3634089
 22 units / \$2.67 each

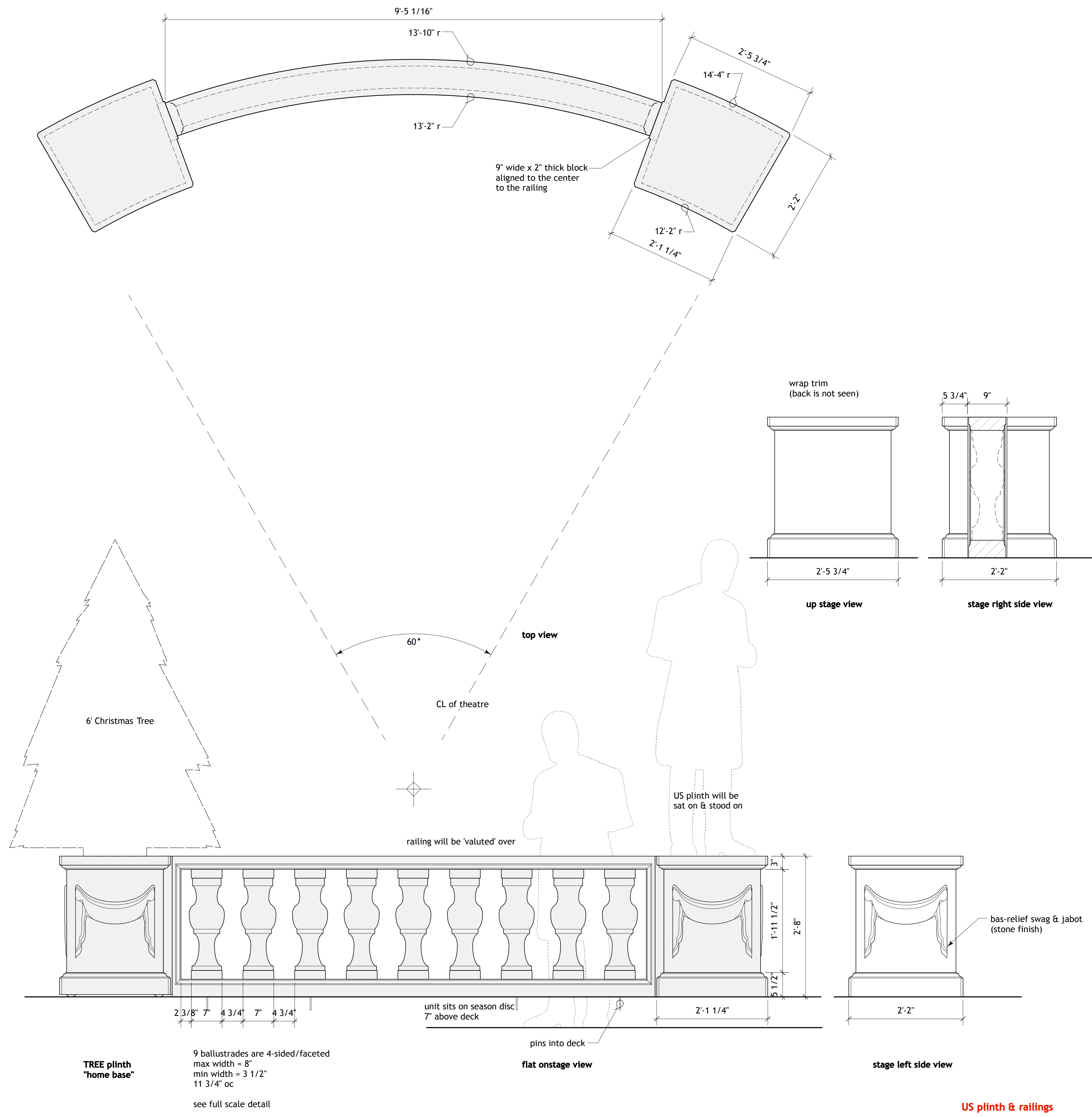
<http://www.menards.com/main/lighting-ceiling-fans/lighting-hardware-accessories/shade-holders-bases/cleat-socket-medium-base-660w/p-1517611-c-6384.htm>



notes

unit flies in at change over, does not move during performance
 column loads in separately (4 stage screws to deck)
 finish on the unit is dark green painted "cast iron" (menard's CASTLE STONE)
 light texture applied to the surfaces
 top of unit is out of sightlines
 tail down unit from lineset #1 (house curtain)





TREE plinth "home base"

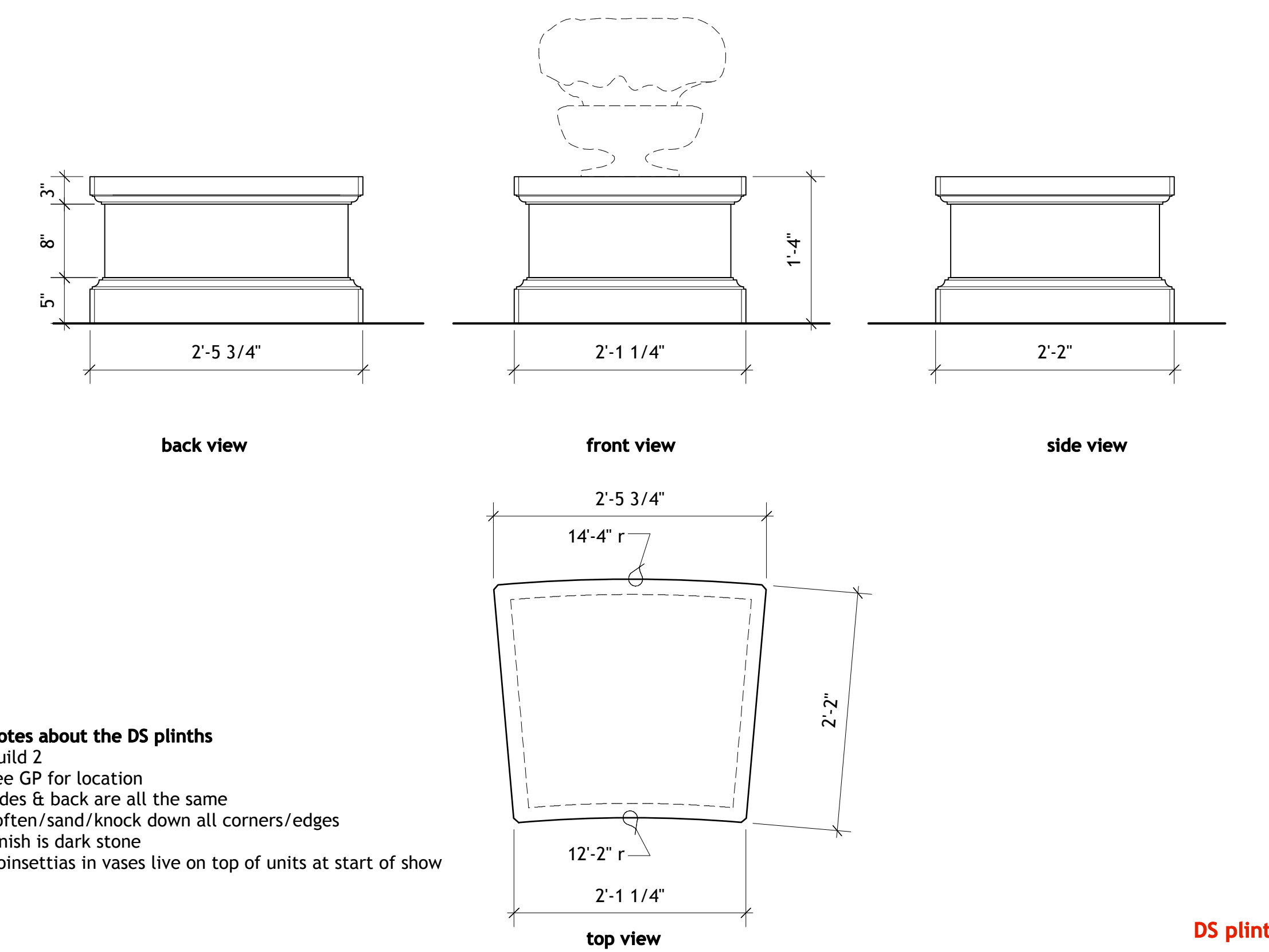
9 balustrades are 4-sided/faceted
 max width = 8"
 min width = 3 1/2"
 11 3/4" oc

see full scale detail

flat onstage view

stage left side view

US plinth & railings



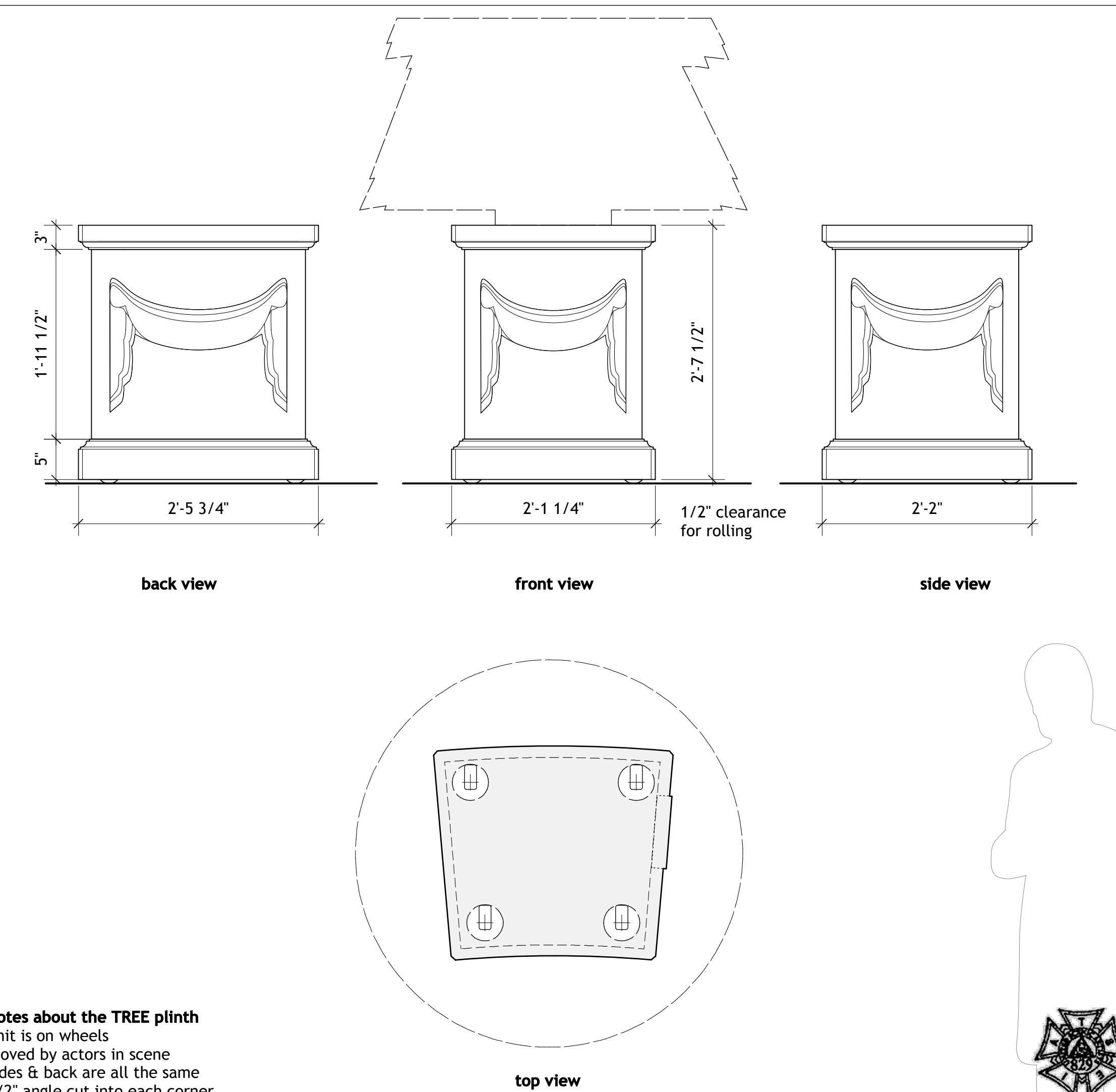
back view

front view

side view

top view

DS plinths



back view

front view

side view

top view

notes about the TREE plinth

unit is on wheels
 moved by actors in scene
 sides & back are all the same
 1/2" angle cut into each corner
 soften/sand/knock down all corners/edges
 finish is dark stone
 6' black christmas tree lives on unit for entire show

TREE plinth



