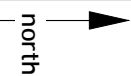


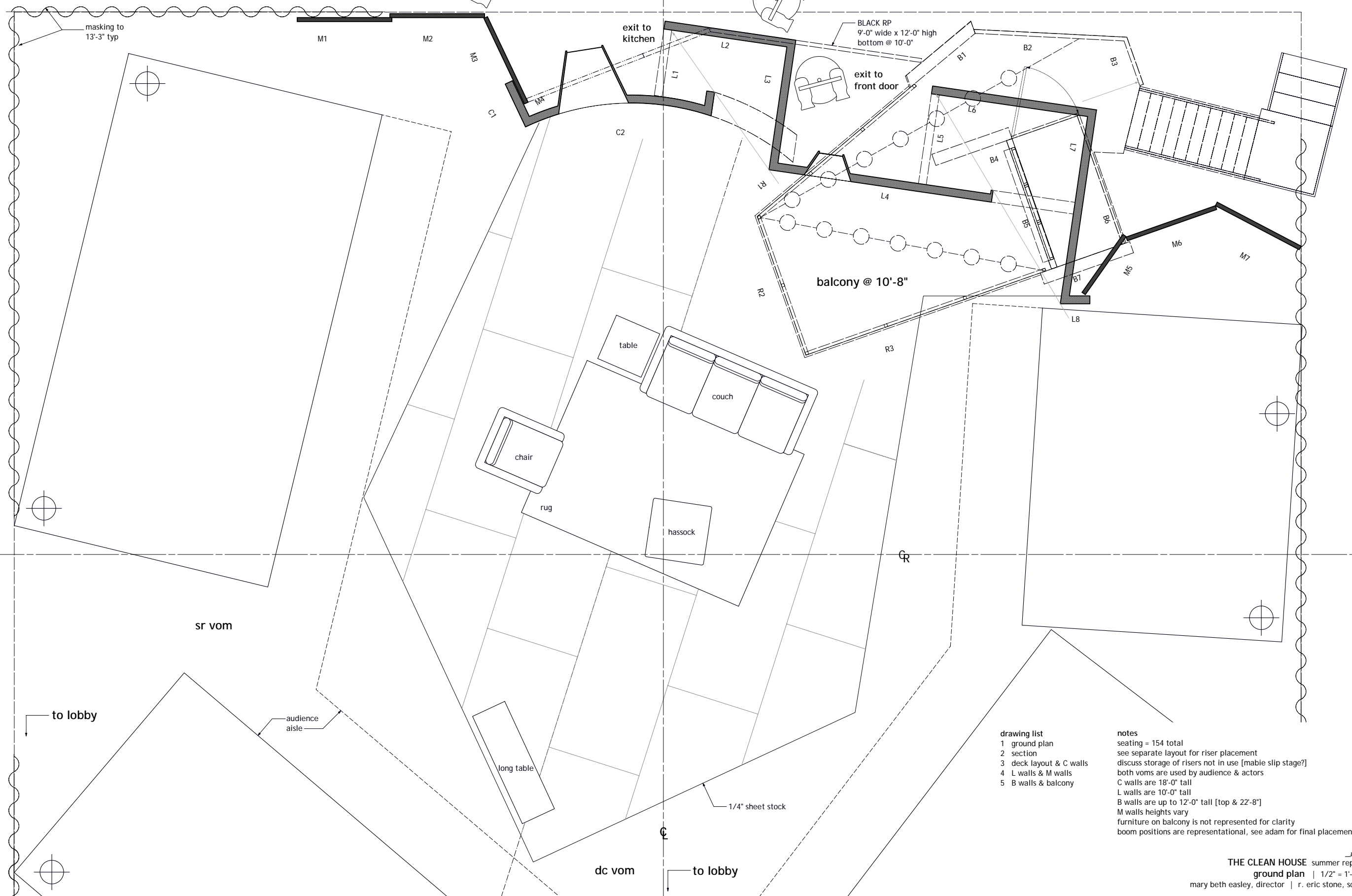
no riser storage in this bay

load-in doors



door used to access sr vom

door used to access upstage entrances



- drawing list**
- 1 ground plan
 - 2 section
 - 3 deck layout & C walls
 - 4 L walls & M walls
 - 5 B walls & balcony

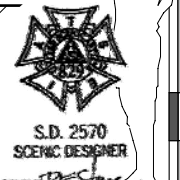
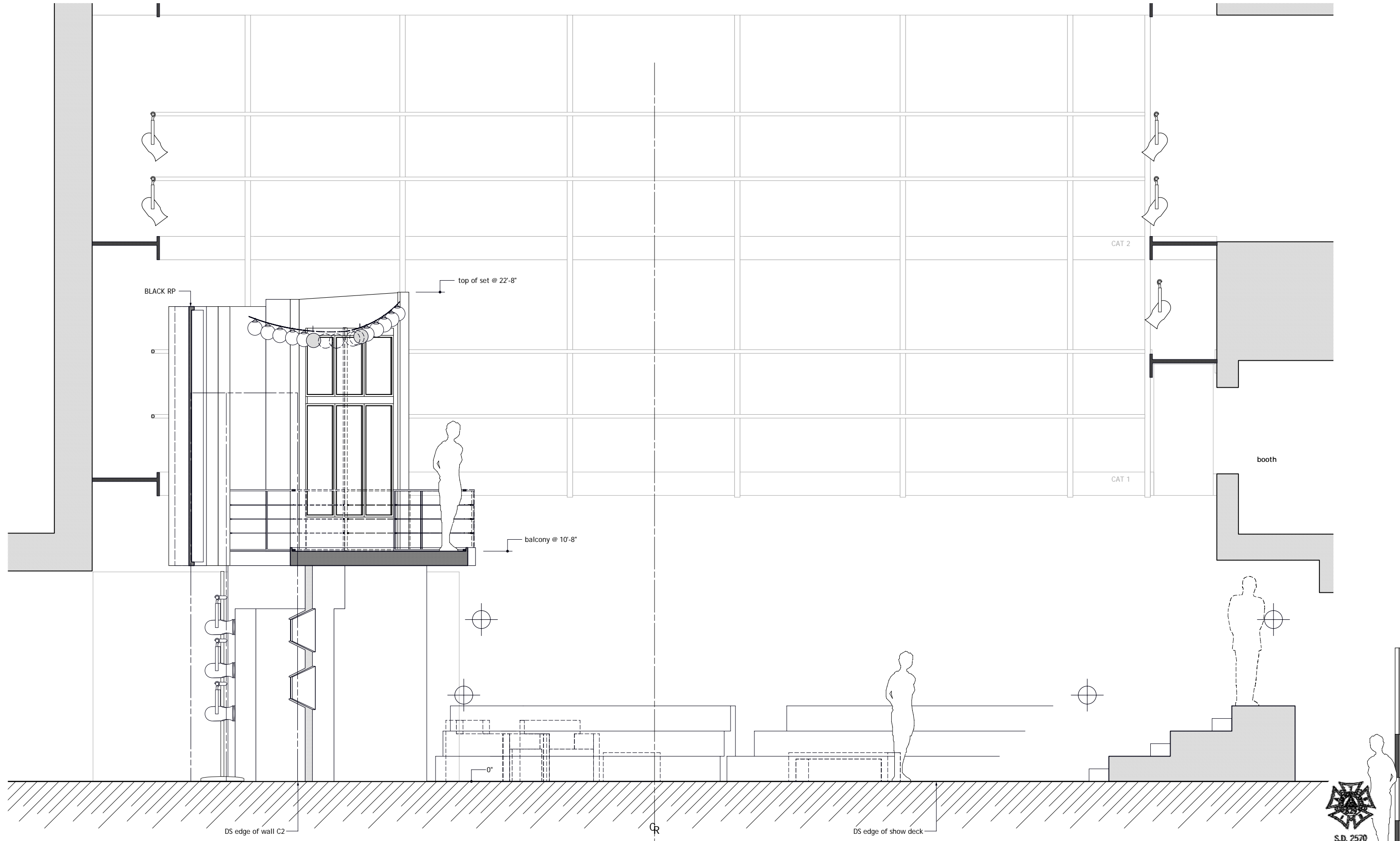
notes

seating = 154 total
 see separate layout for riser placement
 discuss storage of risers not in use [mable slip stage?]
 both vom's are used by audience & actors
 C walls are 18'-0" tall
 L walls are 10'-0" tall
 B walls are up to 12'-0" tall [top & 22'-8"]
 M walls heights vary
 furniture on balcony is not represented for clarity
 boom positions are representational, see adam for final placement



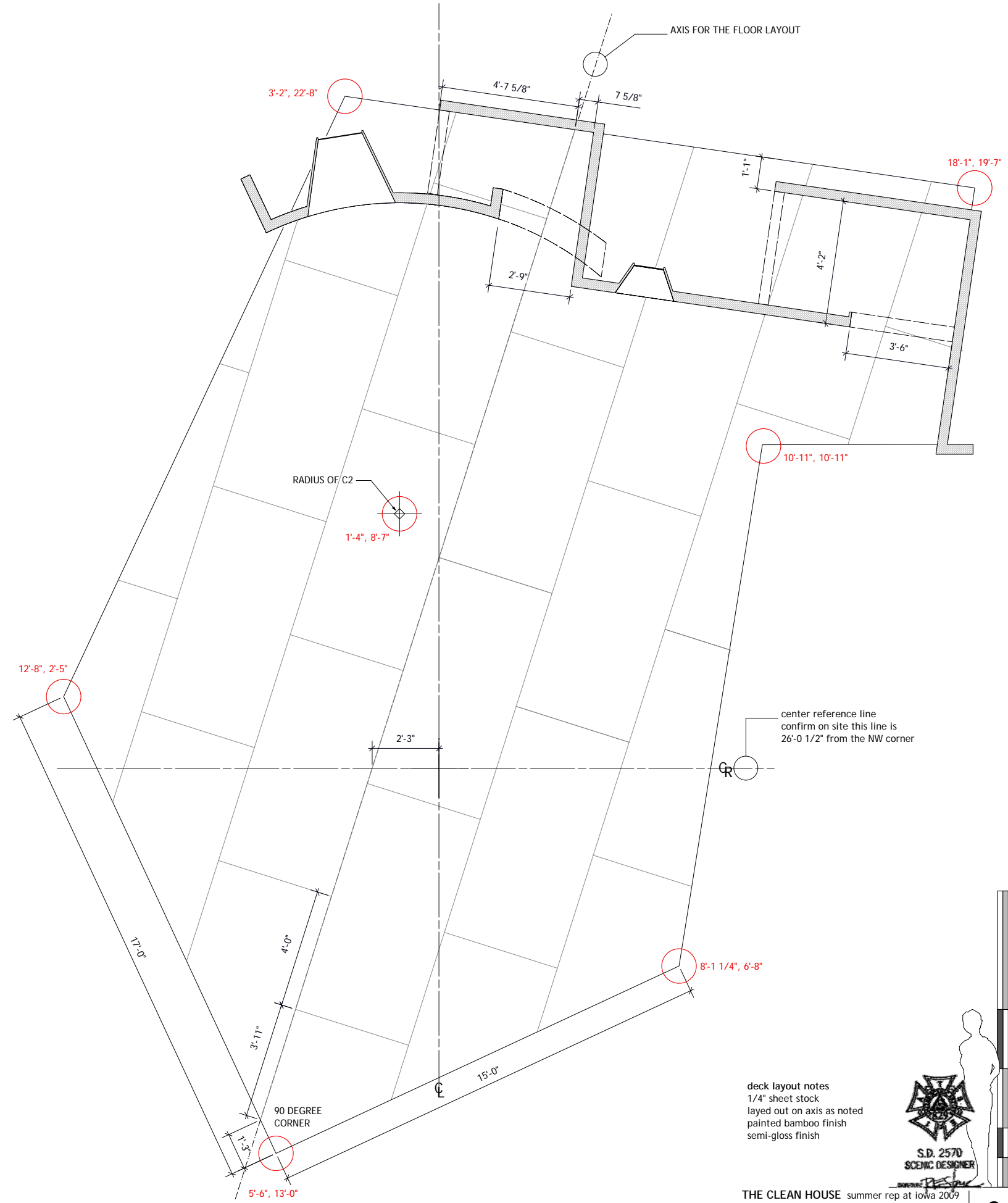
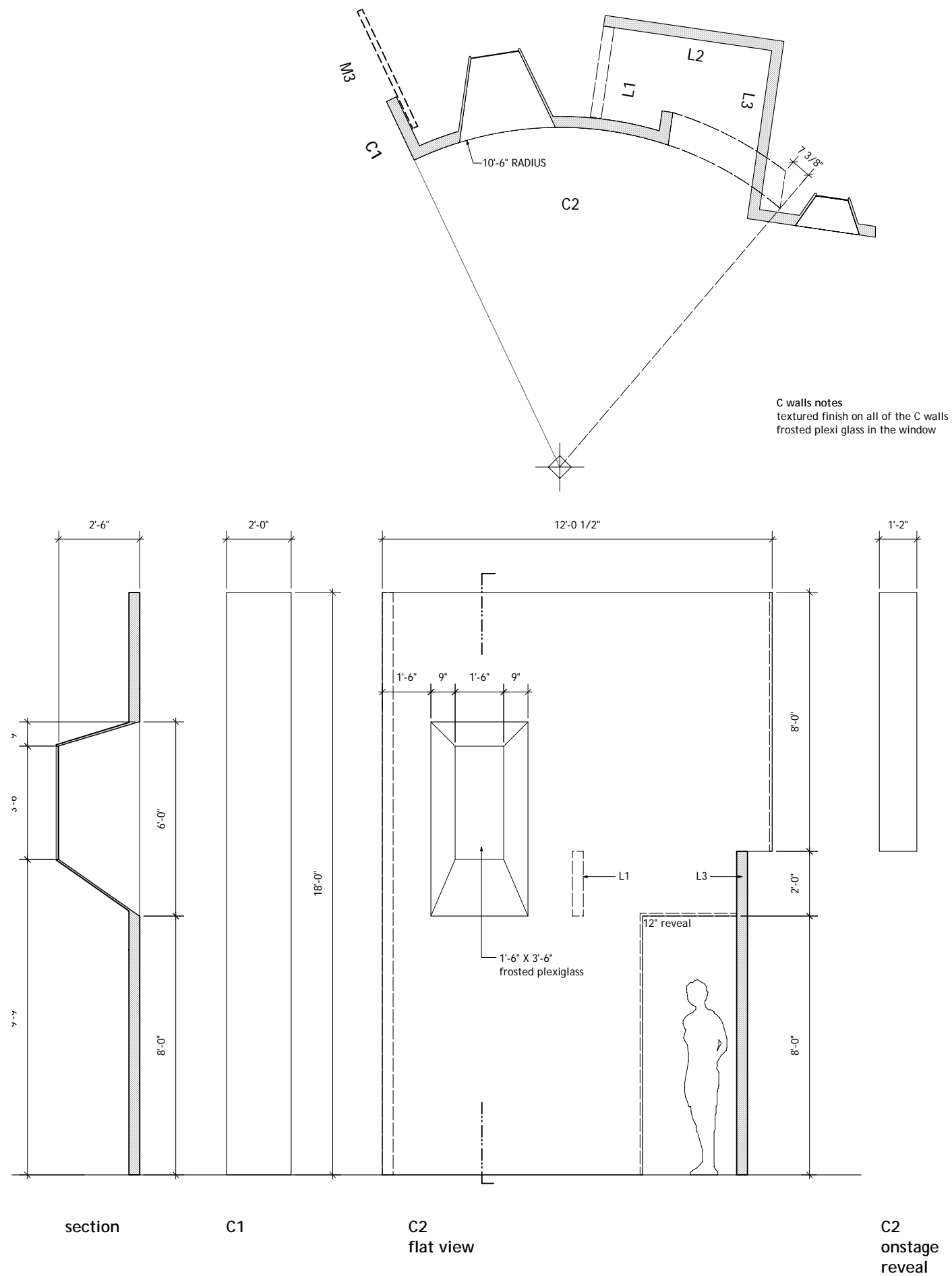
THE CLEAN HOUSE summer rep at Iowa 2009
ground plan | 1/2" = 1'-0" | 4.25.09
 mary beth easley, director | r. eric stone, scenic designer

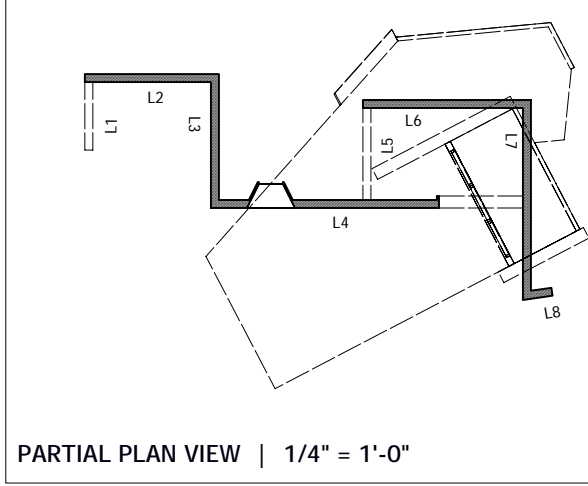
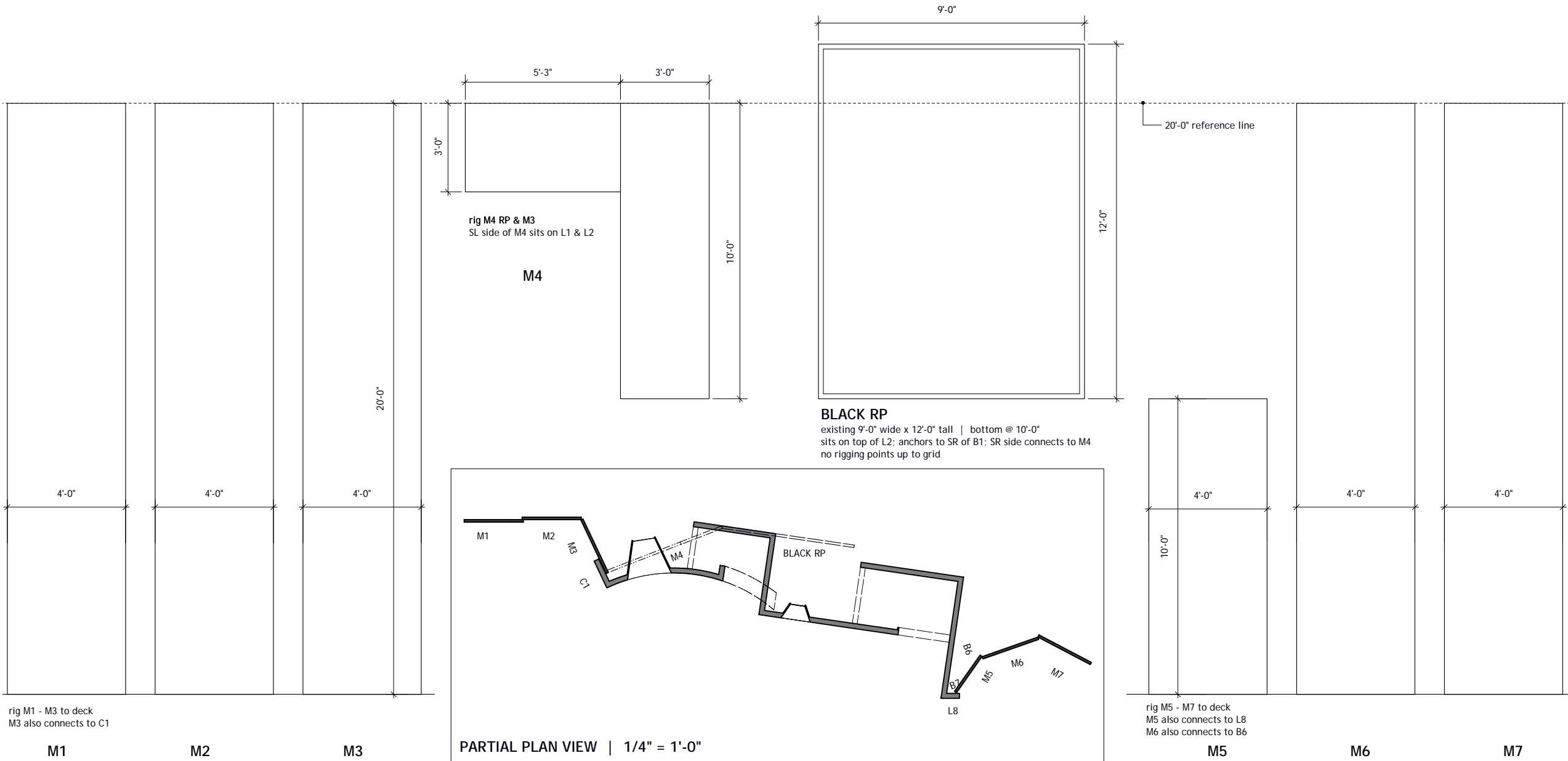
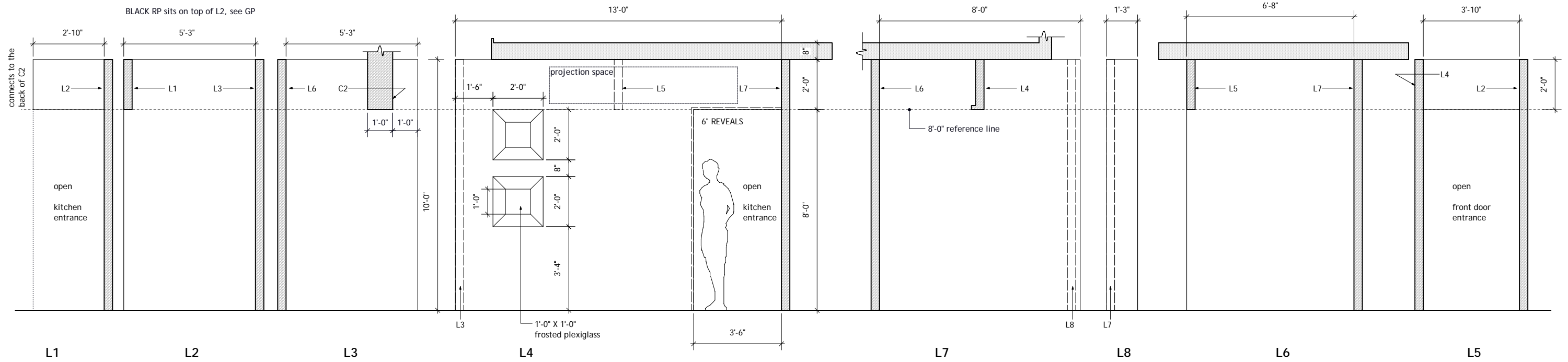
drafting reduced 50% | 1/4" = 1'-0"



THE CLEAN HOUSE summer rep at iowa 2009
 section from 7'-0" SL of center line | 1/2" = 1'-0" | 4.25.09
 mary beth easley, director | r. eric stone, scenic designer

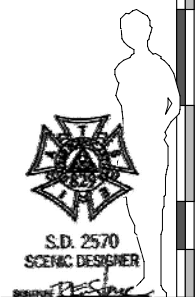
drafting reduced 50% | 1/4" = 1'-0"

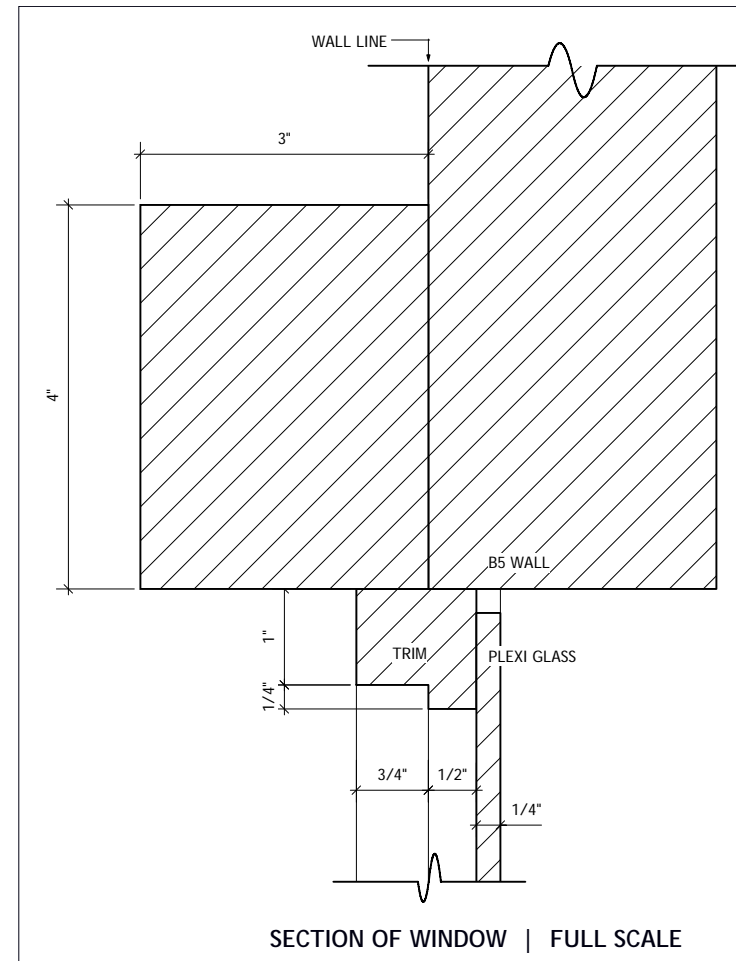
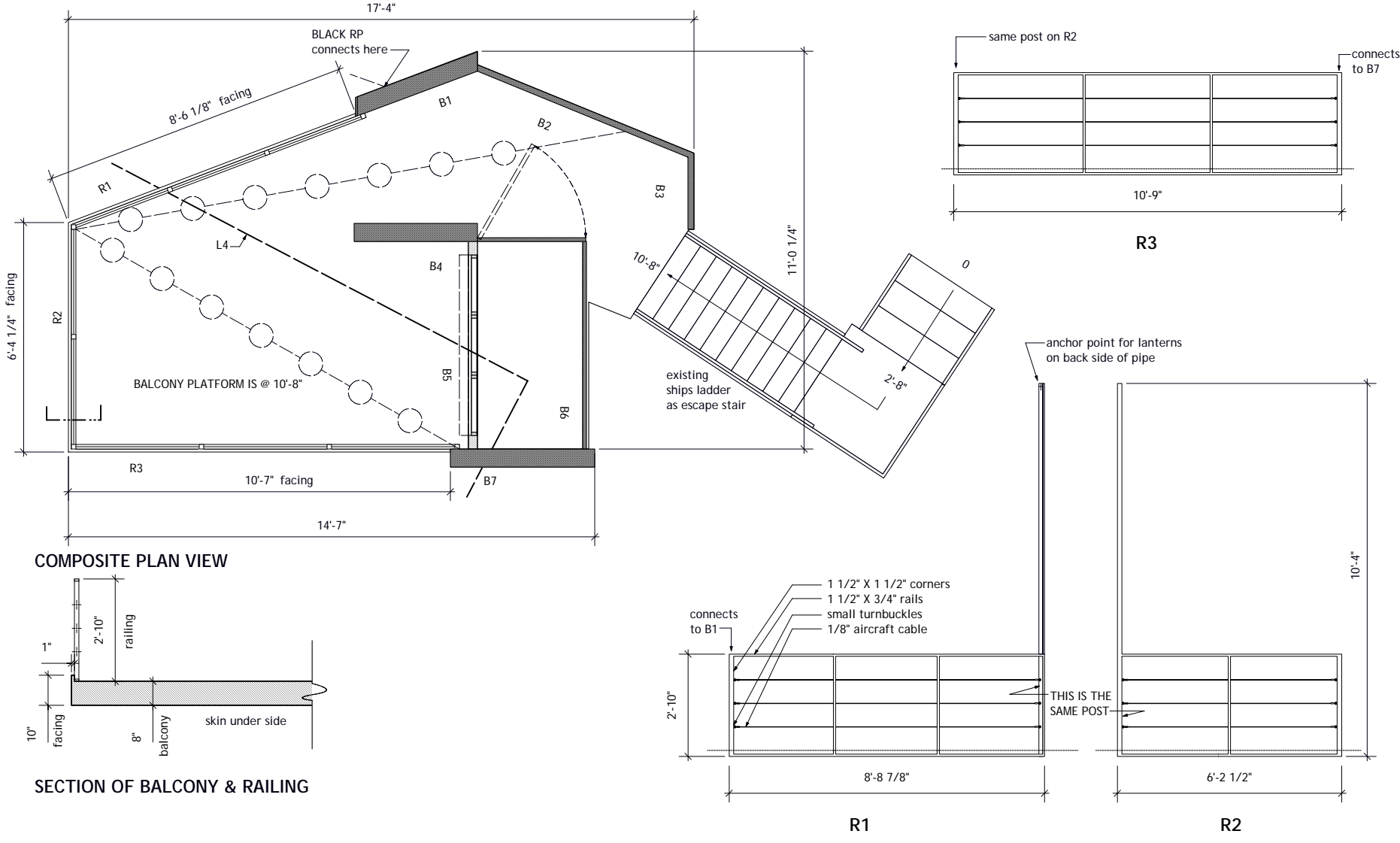
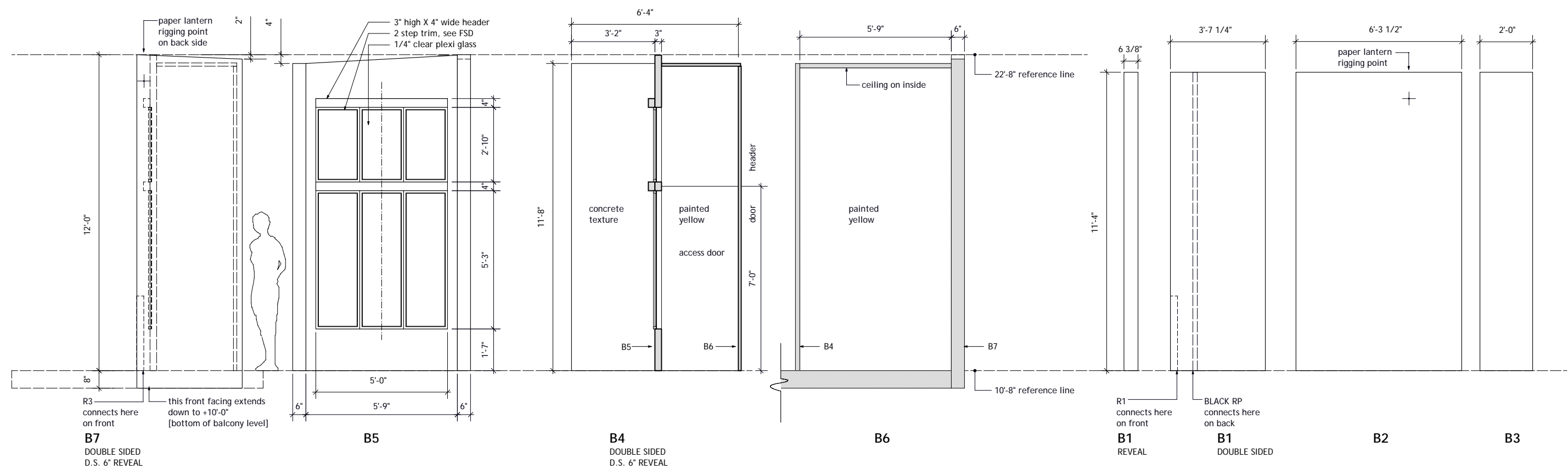




L wall notes
textured finish on all of L walls
frosted plexiglass in the windows

M wall notes
all flats are covered w/ black duvetyne
all are from stock, except M4 & M5
BLACK RP is from stock





balcony notes
 unit has up to 3 people on it
 movement includes dancing on the cantilever
 top & bottom of balcony are skinned
 finish on all 'exterior' surfaces is faux concrete
 finish on railing is dark gray; semi-gloss finish
 black plastic coated air craft cable for railing
 inside [B4, B6, B7] is an 'interior' room; yellow finish
 escape stairs are out of sightlines, carpeted & rail as needed

